

RAMP CLOSED PER STANDARD 701451

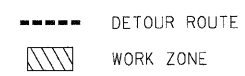
CLOSE RIGHT LANE BY STATION 53+00 PER STANDARD 701401

FAI 290

MATCHLINE STA. 60+00



**LEGEND**



**DETOUR NOTES**

1. THE CONTRACTOR MUST FURNISH, INSTALL, MAINTAIN AND REMOVE ALL TEMPORARY SIGN SUPPORTS. AFTER REMOVING THE SUPPORTS, THE CONTRACTOR MUST FILL HOLES (IF ANY) AND RESTORE THE GROUND TO ITS ORIGINAL CONDITION AND ELEVATION. THE COST OF PLACING GRAVEL, SOD OR SEED MUST BE INCLUDED IN THE UNIT BID PRICE FOR "TRAFFIC CONTROL & PROTECTION FOR TEMPORARY DETOUR."
2. ALL SIGNS, SUPPORTS AND POSITIONING MUST BE IN ACCORDANCE WITH THE MANUAL ON UNIFORM TRAFFIC CONTROL DEVICES, LATEST EDITION.
3. SIGNING SHALL BE PLACED AT LOCATION THAT WILL BE COMPATIBLE WITH EXISTING SIGNING AND PER DISTRICT ONE DETAIL TC-21.
4. ALL EXISTING SIGNS OR OTHER DETOUR SIGNS THAT CONFLICT WITH THE DETOUR MUST BE COVERED.
5. TEMPORARY TRAFFIC SIGNAL TIMINGS WILL BE REQUIRED DURING THIS DETOUR AT THE FOLLOWING INTERSECTION:
  - NB I-290 AT E. THORNDALE AV.

FILE NAME =	DESIGNED - AJP	REVISED -
...\\pplr_abc\C1355_290_Overnight_Detour_05.dwg	DRAWN - TMB	REVISED -
USER NAME = tblank	CHECKED - JJT	REVISED -
PLOT DATE = 11/13/2009	DATE - 10/16/09	REVISED -

**benesch**

**STATE OF ILLINOIS  
DEPARTMENT OF TRANSPORTATION**

**DETOUR PLAN  
I-290 WB OVER I-355**  
SCALE: N.T.S. SHEET NO. 10 OF 115 SHEETS STA. TO STA.

F.A.I. RTE.	SECTION	COUNTY	TOTAL SHEETS	SHEET NO.
* 290,355	22(1, 1-1, 2&3)RS-7	DUPAGE	546	114
FED. ROAD DIST. NO.		ILLINOIS FED. AID PROJECT		
		CONTRACT NO. 60C51		