






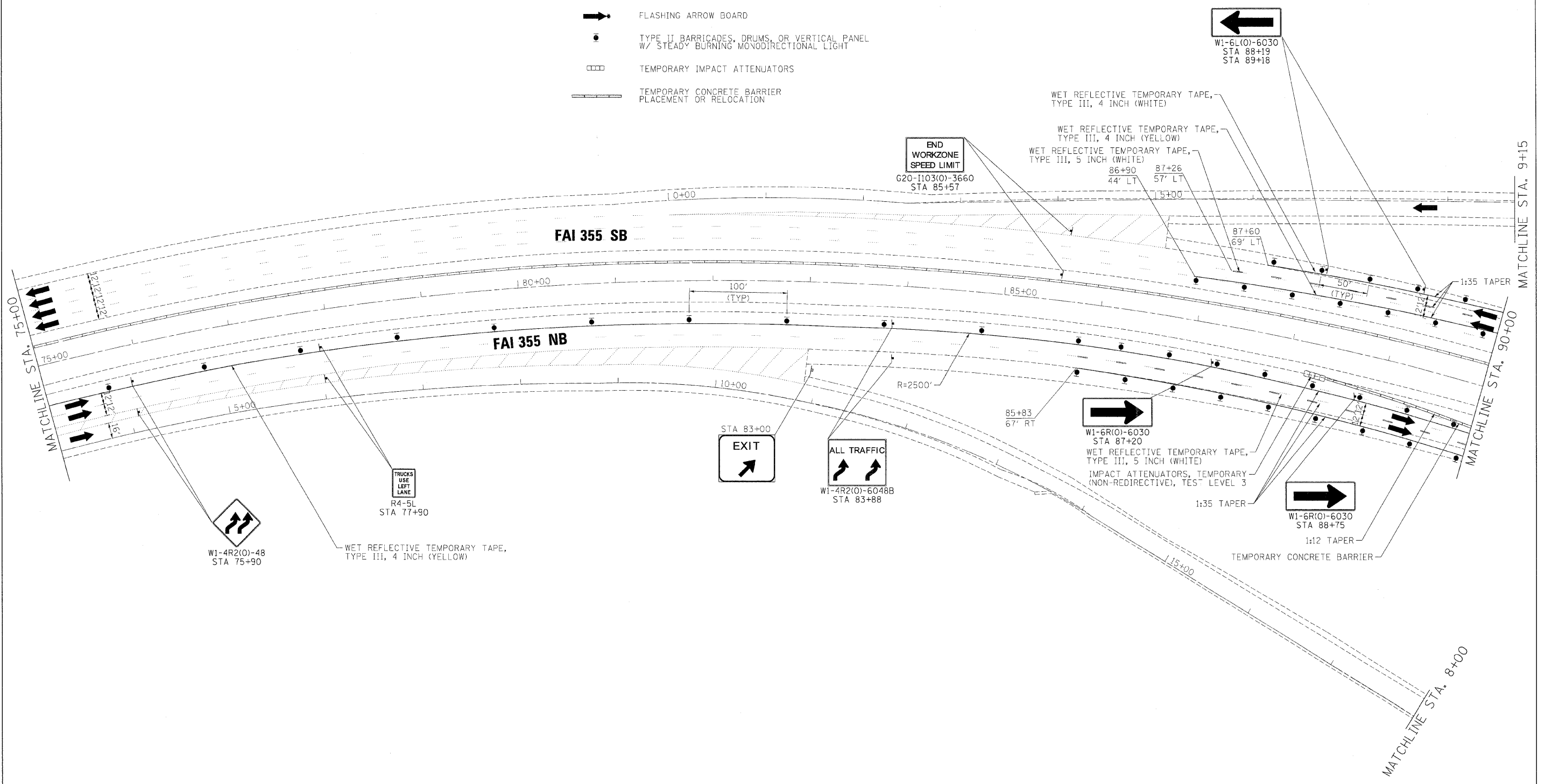




- LEGEND:**
-  TEMPORARY SIGN PANELS
 -  WORK ZONE
 -  TRAFFIC ARROW
 -  FLASHING ARROW BOARD
 -  TYPE II BARRICADES, DRUMS, OR VERTICAL PANEL W/ STEADY BURNING MONODIRECTIONAL LIGHT
 -  TEMPORARY IMPACT ATTENUATORS
 -  TEMPORARY CONCRETE BARRIER PLACEMENT OR RELOCATION



FILE NAME =	DESIGNED - AJP	REVISED -	benesch	STATE OF ILLINOIS DEPARTMENT OF TRANSPORTATION	MAINTENANCE OF TRAFFIC PLAN - STAGE 1			F.A.I. RTE.	SECTION	COUNTY	TOTAL SHEETS	SHEET NO.	
...\\proln_abc.c1.355.mot.ST.1.07.dgn	DRAWN - TMB	REVISED -			SCALE: 1"=50'	SHEET NO. 27 OF 115 SHEETS	STA.	TO STA.	22(1, 1-1, 2&3)RS-7	DUPAGE	546	131	
USER NAME = tblank	CHECKED - JJT	REVISED -						#290,355	CONTRACT NO. 60651				
PLDT DATE = 11/13/2009	DATE = 10/16/09	REVISED -						FED. ROAD DIST. NO. [ILLINOIS] FED. AID PROJECT					