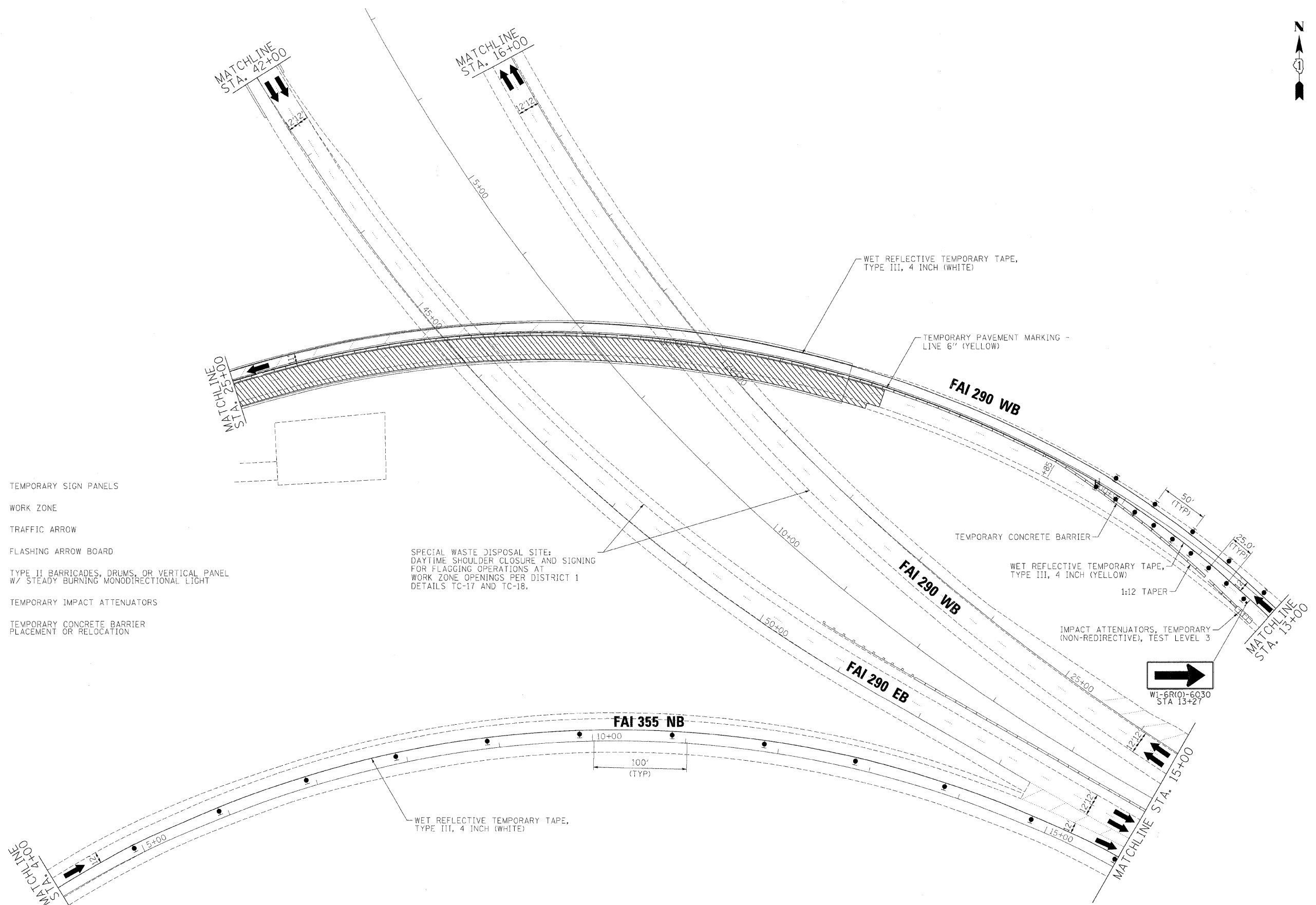




**LEGEND:**

- TEMPORARY SIGN PANELS
- WORK ZONE
- TRAFFIC ARROW
- FLASHING ARROW BOARD
- TYPE II BARRICADES, DRUMS, OR VERTICAL PANEL W/ STEADY BURNING MONODIRECTIONAL LIGHT
- TEMPORARY IMPACT ATTENUATORS
- TEMPORARY CONCRETE BARRIER PLACEMENT OR RELOCATION



SPECIAL WASTE DISPOSAL SITE:  
 DAYTIME SHOULDER CLOSURE AND SIGNING  
 FOR FLAGGING OPERATIONS AT  
 WORK ZONE OPENINGS PER DISTRICT 1  
 DETAILS TC-17 AND TC-18.

FILE NAME =	DESIGNED - AJP	REVISED -
...\\prain_abc\c1\290_mot.ST.1.24.dgn	DRAWN - TMB	REVISED -
USER NAME = tblank	CHECKED - JJT	REVISED -
PLDT DATE = 11/13/2009	DATE - 10/16/09	REVISED -

**benesch**

**STATE OF ILLINOIS  
 DEPARTMENT OF TRANSPORTATION**

<b>MAINTENANCE OF TRAFFIC    PLAN - STAGE 1</b>		
SCALE: 1"=50'	SHEET NO. 35 OF 115 SHEETS	STA. TO STA.

F.A.I. RTE.	SECTION	COUNTY	TOTAL SHEETS	SHEET NO.
* 290,355	22(1, 1-1, 2&3)RS-7	DUPAGE	546	139
FED. ROAD DIST. NO.		ILLINOIS FED. AID PROJECT		
		CONTRACT NO. 60G51		