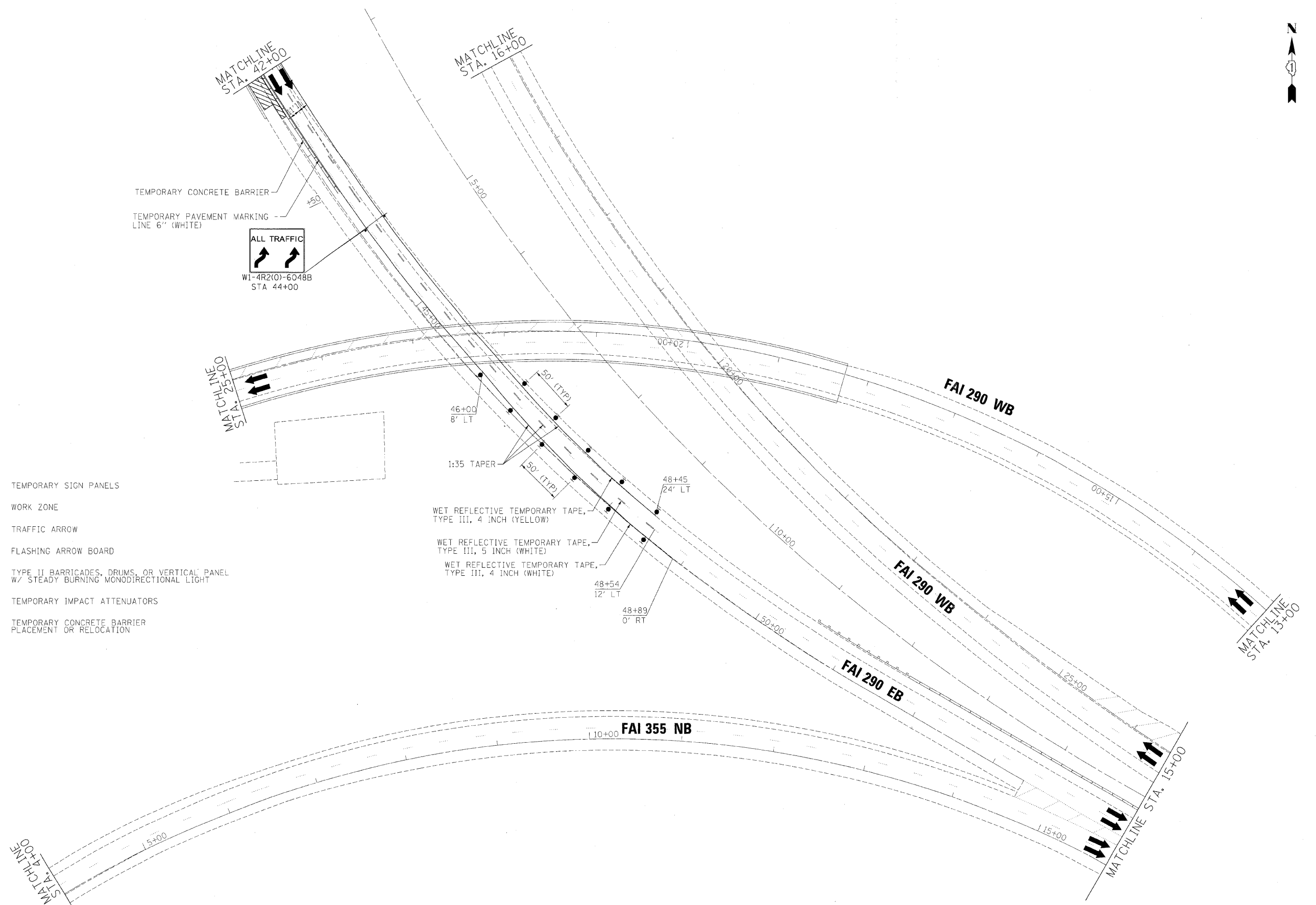


LEGEND:

- TEMPORARY SIGN PANELS
- WORK ZONE
- TRAFFIC ARROW
- FLASHING ARROW BOARD
- TYPE II BARRICADES, DRUMS, OR VERTICAL PANEL W/ STEADY BURNING MONODIRECTIONAL LIGHT
- TEMPORARY IMPACT ATTENUATORS
- TEMPORARY CONCRETE BARRIER PLACEMENT OR RELOCATION



| | | |
|------------------------------------|-----------------|-----------|
| FILE NAME = | DESIGNED - AJP | REVISED - |
| \\prpln\ABC\1.290\mot.ST.2b.24.dgn | DRAWN - TMB | REVISED - |
| USER NAME = jmajewski | CHECKED - JJT | REVISED - |
| PLOT DATE = 12/16/2009 | DATE - 10/16/09 | REVISED - |

benesch

**STATE OF ILLINOIS
DEPARTMENT OF TRANSPORTATION**

**MAINTENANCE OF TRAFFIC
PLAN - STAGE 2 - EB FLYOVER**

SCALE: 1"=50' SHEET NO. 95 OF 115 SHEETS STA. TO STA.

| | | | | |
|---------------------|--------------------|---------------------------|--------------|-----------|
| F.A.J. RTE. | SECTION | COUNTY | TOTAL SHEETS | SHEET NO. |
| • 290, 355 | 22X1, 1-1, 2&3RS-7 | DUPAGE | 546 | 199 |
| FED. ROAD DIST. NO. | | ILLINOIS FED. AID PROJECT | | |
| | | CONTRACT NO. 60C51 | | |