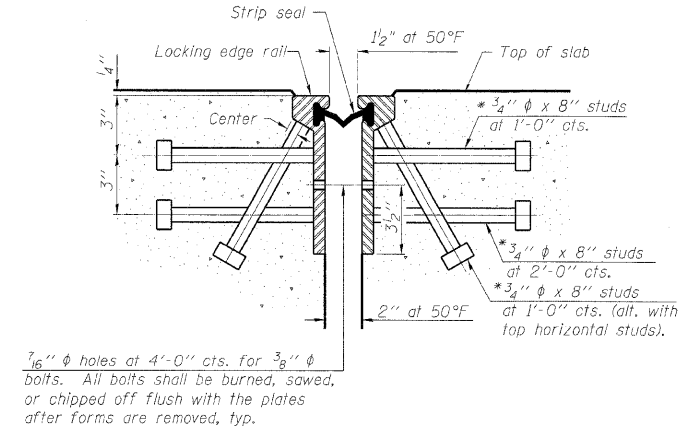
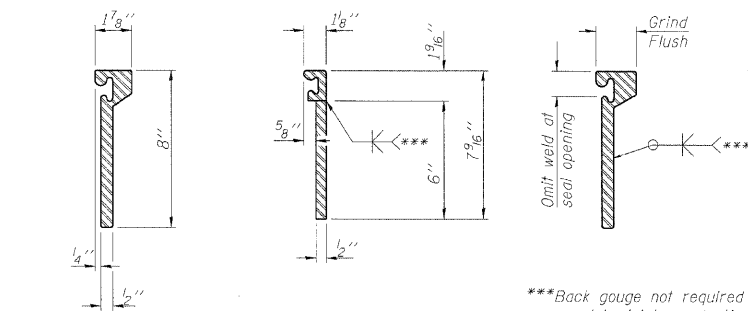


STATE OF ILLINOIS  
DEPARTMENT OF TRANSPORTATION

\* Granular or solid flux filled headed studs conforming to Article 1006.32 of the Std. Specs., automatically end welded.



SECTION THRU  
ROLLED RAIL JOINT



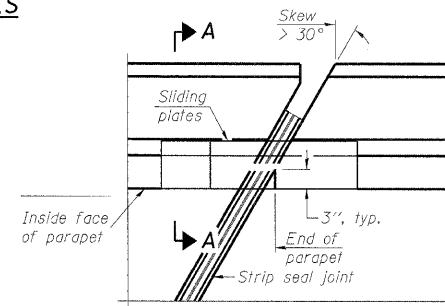
ROLLED  
EXTRUDED RAIL      WELDED RAIL

\*\*\*Back gauge not required if complete joint penetration is verified by mock-up.

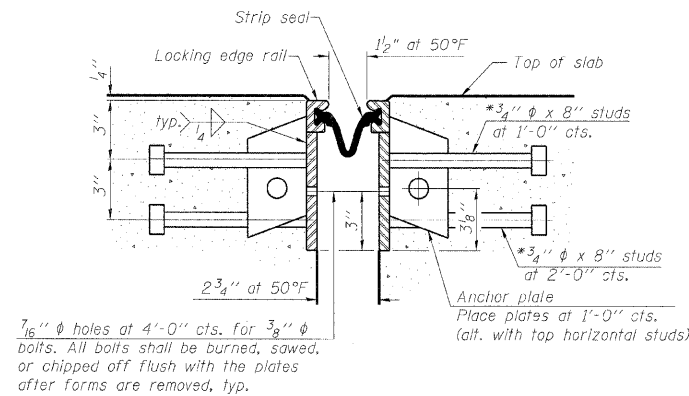
LOCKING EDGE  
RAIL SPLICE

The inside of the locking edge rail groove shall be free of weld residue.

LOCKING EDGE RAILS

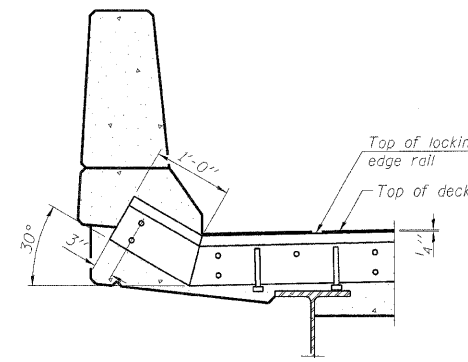
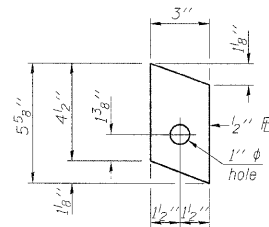


PLAN

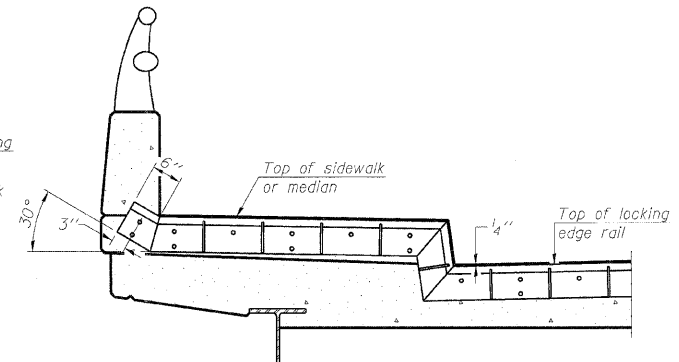


SECTION THRU  
WELDED RAIL JOINT

ANCHOR PLATE  
(for welded rail)



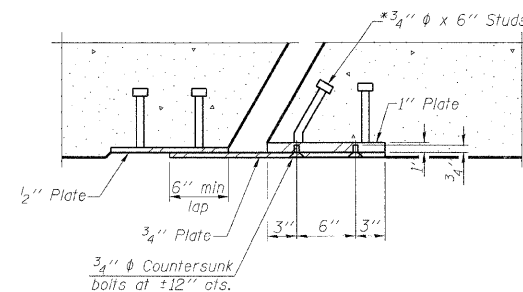
AT PARAPET



AT SIDEWALK OR MEDIAN

Shorter plates with a single row of studs at 12 inch centers may be necessary on medians which are shallower than 9 inch. See manufacturer's recommendation.

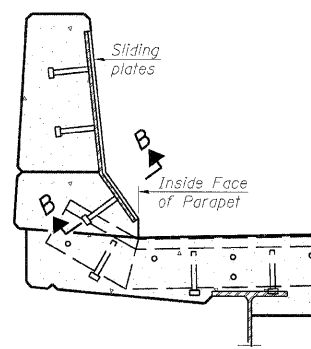
TYPICAL END TREATMENTS



SECTION B-B

BILL OF MATERIAL

Item	Unit	Total
Preformed Joint Strip Seal	Foot	140.0



SECTION A-A

POINT BLOCK DETAILS  
(for skews > 30°)

DESIGNED	-	MFB
CHECKED	-	KWS
DRAWN	-	RMC
CHECKED	-	KWS

EJ-SSJ

10-1-08

benesch

alfred benesch & company  
Engineers • Surveyors • Planners  
205 North Michigan Avenue, Suite 2400  
Chicago, Illinois 60601  
312-565-0450      Job No. 10050

SHEET NO. 7	F.A.I. RTE. 290/355	SECTION 22(1, 1-1, 2&3)RS-7	COUNTY DUPAGE	TOTAL SHEETS	SHEET NO.
				546	261
8 SHEETS			CONTRACT NO. 60G51		
FED. ROAD DIST. NO.		ILLINOIS	FED. AID PROJECT		

PREFORMED JOINT STRIP SEAL  
STRUCTURE NO. 022-0098