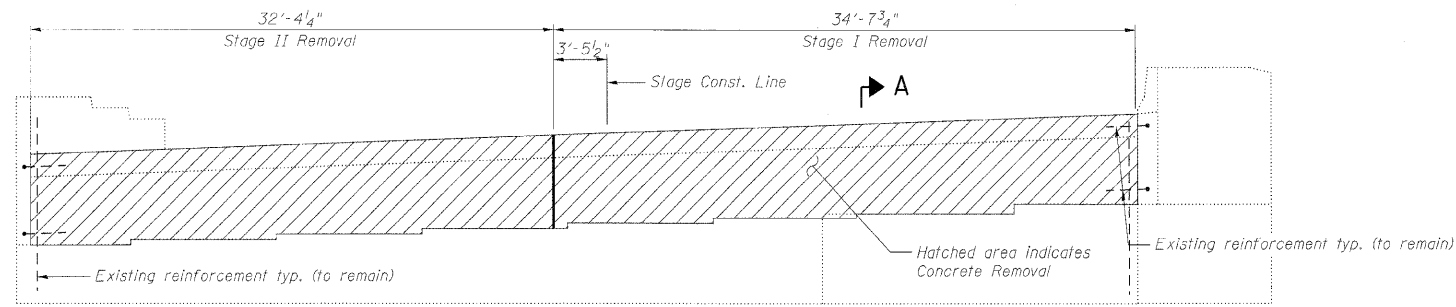
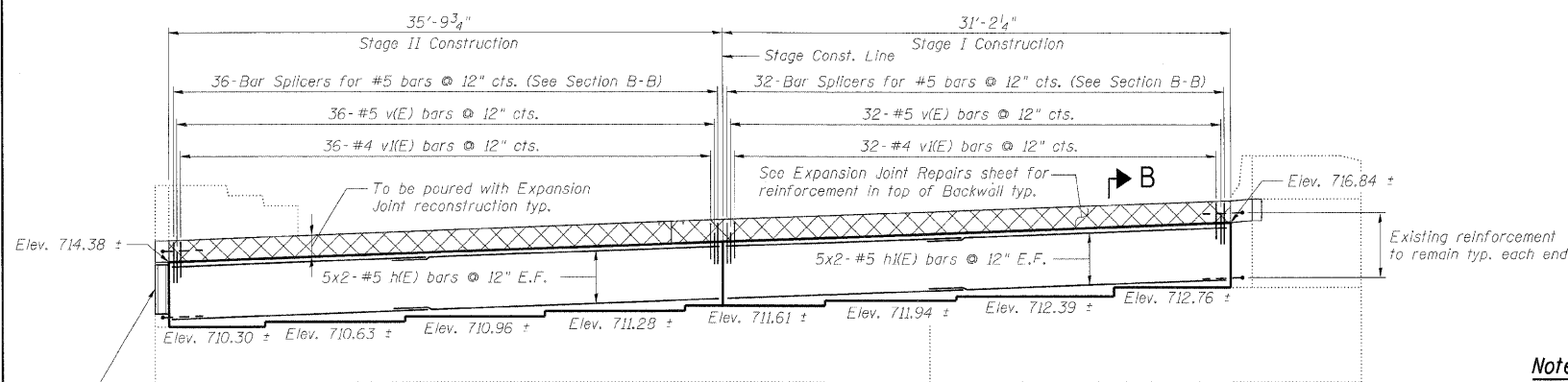


STATE OF ILLINOIS
DEPARTMENT OF TRANSPORTATION



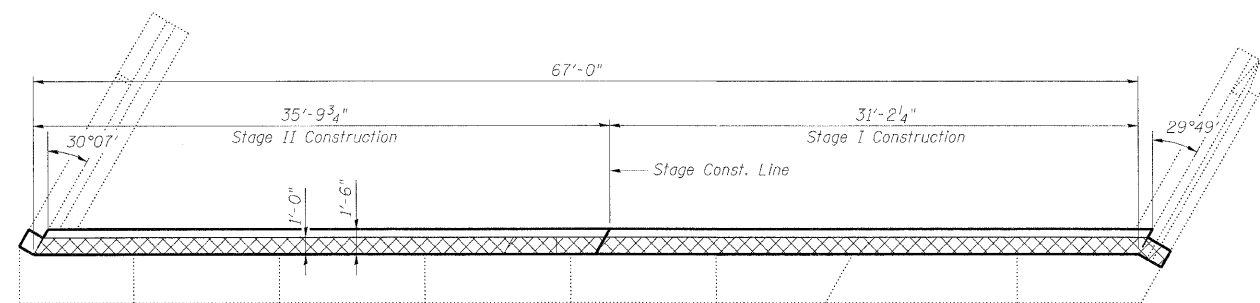
EXISTING ELEVATION - WEST ABUTMENT
(Looking West)



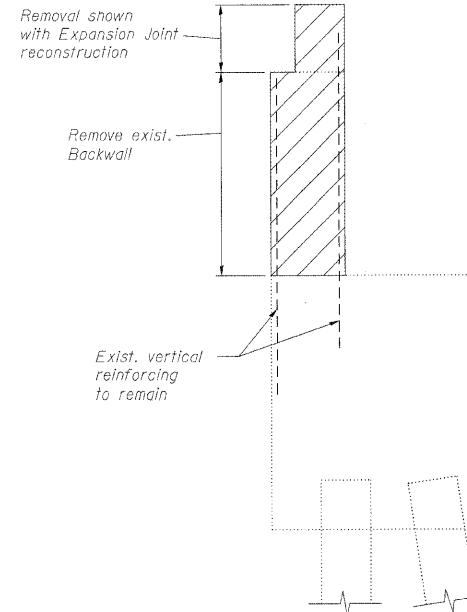
PROPOSED ELEVATION - WEST ABUTMENT
(Looking West)

* Structural Repair of Concrete (Depth equal to or less than 5")

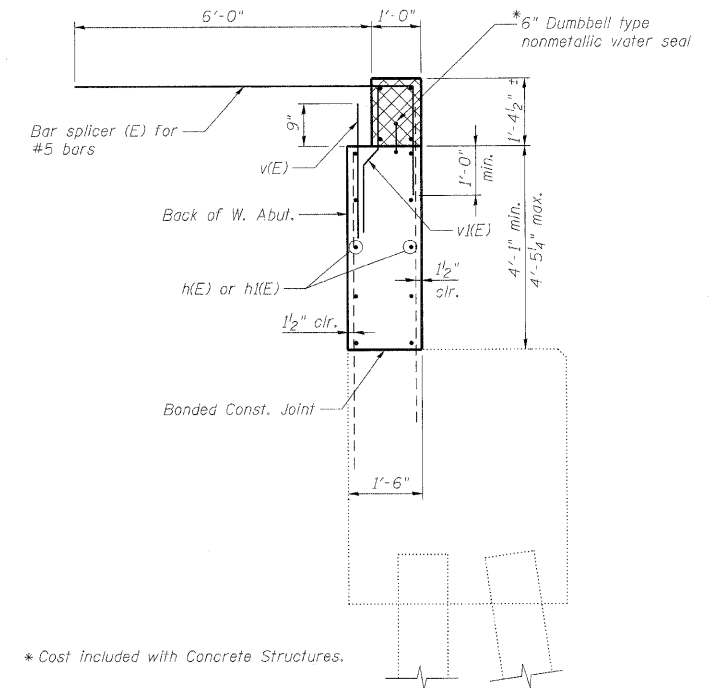
* Repair is estimated based on visual inspection completed in June 2009. Actual repair area and location shall be determined by the Engineer and shown on As-Built plans.



PLAN - WEST ABUTMENT



SECTION A-A



SECTION B-B

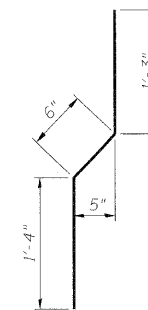
* Cost included with Concrete Structures.

BILL OF MATERIAL

BAR	NO.	SIZE	LENGTH	SHAPE
h(E)	20	#5	19'-0"	—
h(E)	20	#5	16'-9"	—
v(E)	68	#5	2'-0"	—
v(E)	68	#4	3'-1"	—
ITEM		UNIT	TOTAL	
Structure Excavation		Cu. Yd.	145	
Concrete Removal		Cu. Yd.	16.1	
Concrete Structures		Cu. Yd.	16.1	
Reinforcement Bars, Epoxy Coated		Pound	1,030	
Structural Repair of Concrete (Depth Equal to or Less than 5")		Sq. Ft.	12	

Notes:

- Cross hatched area to be poured with Expansion Joint reconstruction. Quantity of concrete included with Concrete Superstructure.
- Bars indicated thus 5x2-#5 etc. indicates 5 lines of bars with 2 lengths per line.
- Min. bar lap: #5 = 2'-2"
- E.F. denotes Each Face.
- Existing reinforcement bars extending into the concrete removal area shall be cleaned, straightened and incorporated into the new construction. Any reinforcement bars that are damaged during concrete removal shall be replaced with an approved bar splicer or anchorage system. Cost included with Concrete Removal.
- For details of Bar Splicers, see Bar Splicer Assembly Details sheet.



BAR v(E)

DESIGNED -	MFB
CHECKED -	KWS
DRAWN -	RMG
CHECKED -	KWS

benesch

alfred benesch & company
Engineers • Surveyors • Planners
205 North Michigan Avenue, Suite 2400
Chicago, Illinois 60601
312-565-0450 Job No. 10050

SHEET NO. 11 18 SHEETS	F.A.I. RTE. 290 355	SECTION 22(1, 1-1, 2&3)RS-7	COUNTY DUPAGE	TOTAL SHEETS 546	SHEET NO. 273
	CONTRACT NO. 60G51			FED. ROAD DIST. NO. ILLINOIS FED. AID PROJECT	