

STATE OF ILLINOIS
DEPARTMENT OF TRANSPORTATION

QUANTITIES FOR 100-FOOT APPROACH SLAB

Skew Angle	Bottom Reinforcement				Top Reinforcement				Total Weight bars-lbs.
	#5 B bars		A ₁ A ₂	B ₁	#4 A ₃ bars		#4 A ₄ bars		
	No.	Length			No.	Length	No.	Length	

Skew Angle	Bottom Reinforcement				Top Reinforcement				Total Weight bars-lbs.
	#5 B bars		A ₁ A ₂	B ₁	#4 A ₃ bars		#4 A ₄ bars		
	No.	Length			No.	Length	No.	Length	

Skew Angle	Bottom Reinforcement				Top Reinforcement				Total Weight bars-lbs.
	#5 B bars		A ₁ A ₂	B ₁	#4 A ₃ bars		#4 A ₄ bars		
	No.	Length			No.	Length	No.	Length	

16-FOOT WIDTH PAVEMENT

Skew Angle	#5 B bars	Length	A ₁ A ₂	B ₁	#4 A ₃ bars	#4 A ₄ bars	Total Weight bars-lbs.	
0°	40	15'-6"		B1	34'-3"	—	5980	
5°	40	15'-7"		B1	34'-0"	14	3'-11"	6010
10°	40	15'-9"		B1	33'-10"	14	5'-2"	6020
15°	40	16'-1"		B1	33'-7"	14	6'-5"	6030
20°	40	16'-6"		B1	33'-5"	14	7'-9"	6050
25°	40	17'-1"		B1	33'-2"	14	9'-2"	6070
30°	40	17'-11"		B1	32'-11"	14	10'-9"	6110
35°	40	18'-11"		B1	32'-7"	14	12'-6"	6150
40°	40	20'-3"		B1	32'-3"	14	14'-5"	6200
45°	40	21'-11"		B1	31'-11"	14	16'-8"	6280
50°	40	24'-1"		B1	31'-5"	14	19'-4"	6370
55°	40	27'-0"		B1	30'-11"	14	22'-8"	6490
60°	40	31'-0"		B1	30'-2"	14	26'-11"	6660

24-#9 A bars 27'-0"
11-#9 A₁ bars 20'-3"
24-#5 A₂ bars 10'-0"
26-#4 B₁ bars 15'-6"

Bridge Approach Pavement
178 Sq. Yds.

24-FOOT WIDTH PAVEMENT

Skew Angle	#5 B bars	Length	A ₁ A ₂	B ₁	#4 A ₃ bars	#4 A ₄ bars	Total Weight bars-lbs.	
0°	40	23'-5"		126	34'-3"	—	8840	
5°	40	23'-7"		126	33'-10"	21	4'-9"	8880
10°	40	23'-10"		126	33'-6"	21	6'-11"	8890
15°	40	24'-4"		126	33'-2"	21	9'-1"	8910
20°	40	25'-0"		126	32'-9"	21	11'-5"	8940
25°	40	25'-11"		126	32'-4"	21	13'-10"	8980
30°	40	27'-2"		126	31'-11"	21	16'-6"	9030
35°	40	28'-8"		126	31'-5"	21	19'-6"	9090
40°	40	30'-8"		126	30'-10"	21	22'-10"	9170
45°	40	33'-3"		126	30'-3"	21	26'-8"	9290
50°	80	19'-1"		126	29'-5"	21	31'-3"	9490
55°	80	21'-4"		126	28'-6"	21	36'-11"	9680
60°	80	24'-4"		126	27'-3"	42	22'-9"	9940

32-#9 A bars 27'-0"
19-#9 A₁ bars 20'-3"
32-#5 A₂ bars 10'-0"
52-#4 B₁ bars 11'-6"

Bridge Approach Pavement
267 Sq. Yds.

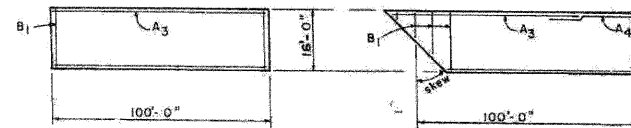
36-FOOT WIDTH PAVEMENT

Skew Angle	#5 B bars	Length	A ₁ A ₂	B ₁	#4 A ₃ bars	#4 A ₄ bars	Total Weight bars-lbs.	
0°	40	35'-6"		189	34'-3"	—	13040	
5°	40	35'-8"		189	33'-8"	32	5'-10"	13090
10°	40	36'-0"		189	33'-2"	32	9'-0"	13110
15°	80	19'-4"		189	32'-8"	32	12'-4"	13230
20°	80	19'-10"		189	32'-0"	32	15'-9"	13260
25°	80	20'-7"		189	31'-5"	32	19'-6"	13330
30°	80	21'-6"		189	30'-9"	32	23'-6"	13410
35°	80	22'-8"		189	30'-0"	32	27'-10"	13510
40°	80	24'-2"		189	29'-2"	32	32'-10"	13630
45°	80	26'-2"		189	28'-3"	64	20'-0"	13840
50°	80	28'-8"		189	27'-1"	64	23'-6"	14050
55°	80	32'-0"		189	25'-8"	64	27'-9"	14330
60°	80	36'-7"		189	23'-10"	64	33'-2"	14710

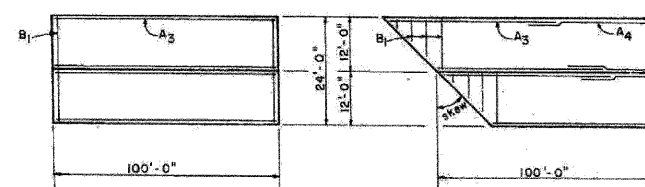
44-#9 A bars 27'-0"
31-#9 A₁ bars 20'-3"
44-#5 A₂ bars 10'-0"
78-#4 B₁ bars 11'-6"

Bridge Approach Pavement
400 Sq. Yds.

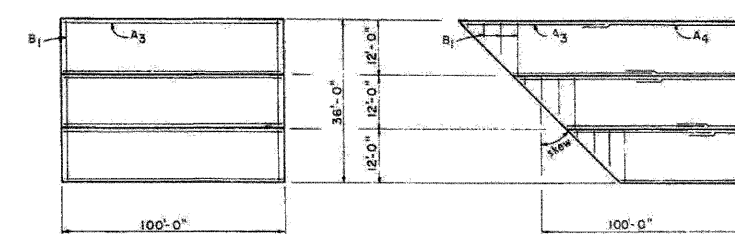
TOP OF SLAB BAR ARRANGEMENT



TOP OF SLAB BAR ARRANGEMENT



TOP OF SLAB BAR ARRANGEMENT



Illinois Department of Transportation

PASSED May 20, 1981

APPROVED May 20, 1981

Engineer of Design

ISSUED 10-11-78

BRIDGE APPROACH PAVEMENT

(Sheet 2 of 2)

STANDARD 2353-5

Full Size D.W.W.Sr.

FOR INFORMATION ONLY

benesch

alfred benesch & company
Engineers • Surveyors • Planners
205 North Michigan Avenue, Suite 2400
Chicago, Illinois 60601
312-566-0450 Job No. 10090

SHEET NO. 15	F.A.I. RTE.	SECTION	COUNTY	TOTAL SHEETS	SHEET NO.
	290-355	22(1, 1-1, 2&3)RS-7	DUPAGE	546	277
18 SHEETS	CONTRACT NO. 60G51				
FED. ROAD DIST. NO.		ILLINOIS	FED. AID PROJECT		

EXISTING PLAN INFORMATION 3 OF 6
STRUCTURE NO. 022-0099