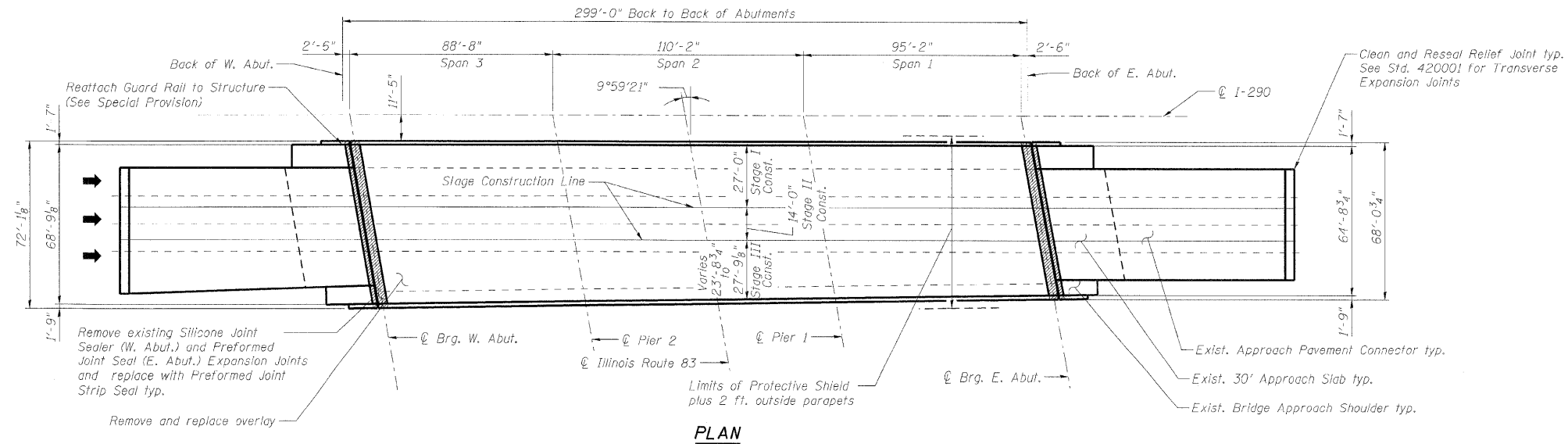


STATE OF ILLINOIS
DEPARTMENT OF TRANSPORTATION

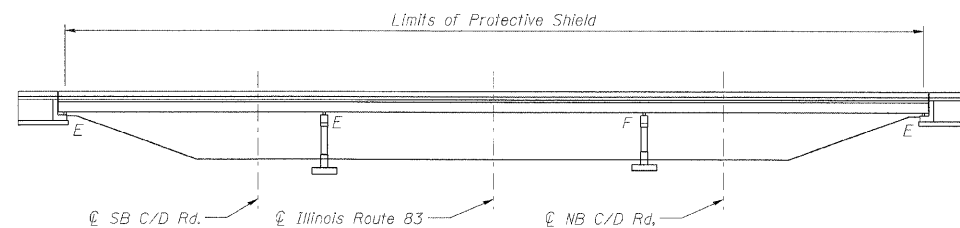
Existing Structure:
The bridge is a three-span continuous, composite plate girder bridge with a 7³/₄-inch reinforced concrete deck and a 2-inch concrete overlay. The original structure was built in 1971. In 1985, the structure was widened and overlaid, the expansion joints were reconstructed and the bearings were replaced. In 1998, the expansion joints were reconstructed and partial depth repairs were made on the approaches. In 2002, the bridge was cleaned and painted.

Stage construction shall be utilized to maintain traffic during construction.

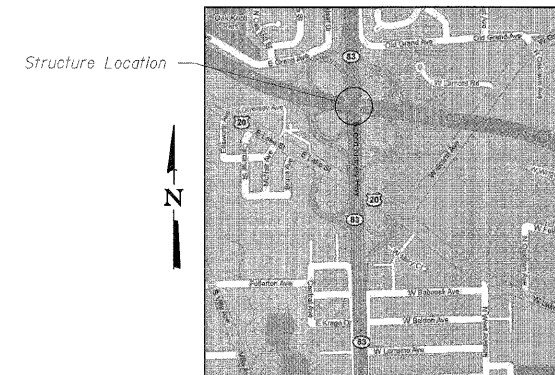
No salvage



PLAN



ELEVATION



LOCATION SKETCH

DESIGN SPECIFICATIONS

2002 AASHTO Standard Specifications for Highway Bridges, 17th Edition

DESIGN STRESSES

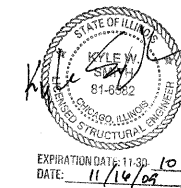
f'c = 3,500 psi
fy = 60,000 psi

SCOPE OF WORK

1. Structural Steel Repairs (see Note A).
2. Bridge Deck Hydro-scarification.
3. Repair bridge deck.
4. Repair approach slab.
5. Repair abutment backwalls.
6. Reconstruct deck joints at each abutment with preformed joint strip seal.
7. Place new overlay.
8. Reconnect guardrail.
9. Clip beam flanges at abutment backwall.
10. Clean and reseal relief joints at the end of approach pavement connectors.
11. Apply concrete sealer to parapets, approach slabs, abutment seats and backwalls.

Note A:

See sheets 317A thru 317C for Structural Steel Repair Details.



GENERAL PLAN AND ELEVATION
I-290 EB OVER ILLINOIS ROUTE 83
DUPAGE COUNTY
STATION 205+44
STRUCTURE NO. 022-0096

DESIGNED	MFB
CHECKED	KWS
DRAWN	RMG
CHECKED	KWS

benesch

alfred benesch & company
Engineers • Surveyors • Planners
205 North Michigan Avenue, Suite 2400
Chicago, Illinois 60601
312-565-0450 Job No. 10050

SHEET NO. 1 9 SHEETS	F.A.I. RTE. 290/355	SECTION 22(1, 1-1, 2&3)RS-7	COUNTY DUPAGE	TOTAL SHEETS 546	SHEET NO. 309
	CONTRACT NO. 60G51			FED. ROAD DIST. NO. ILLINOIS FED. AID PROJECT	