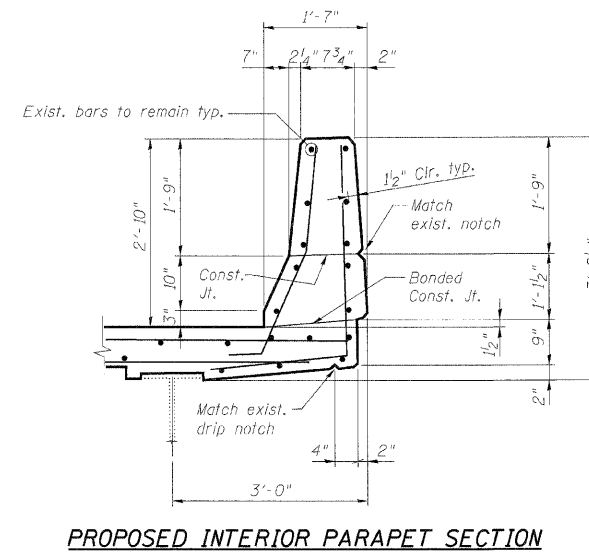
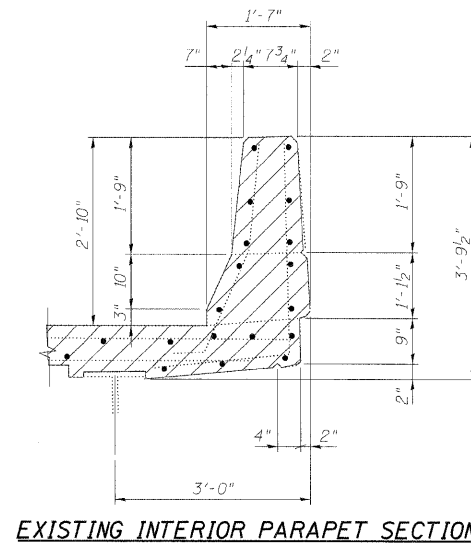
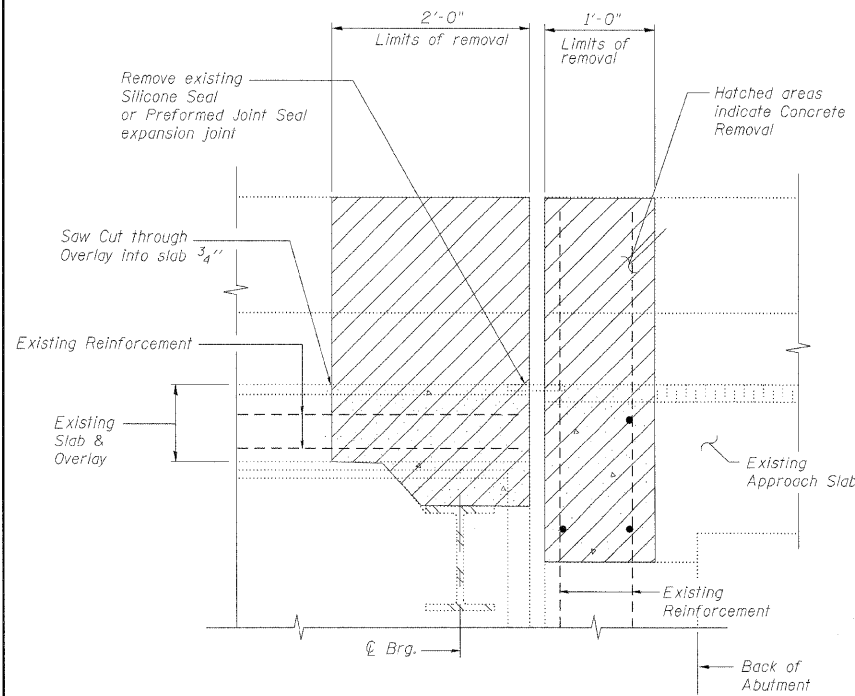


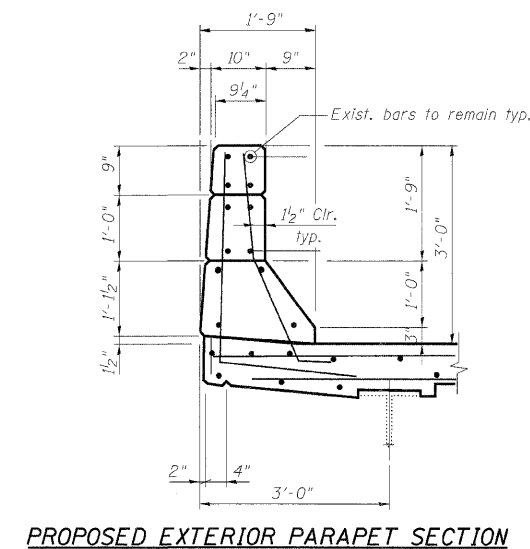
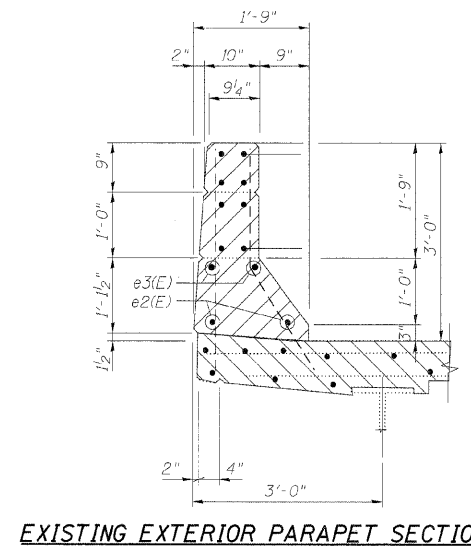
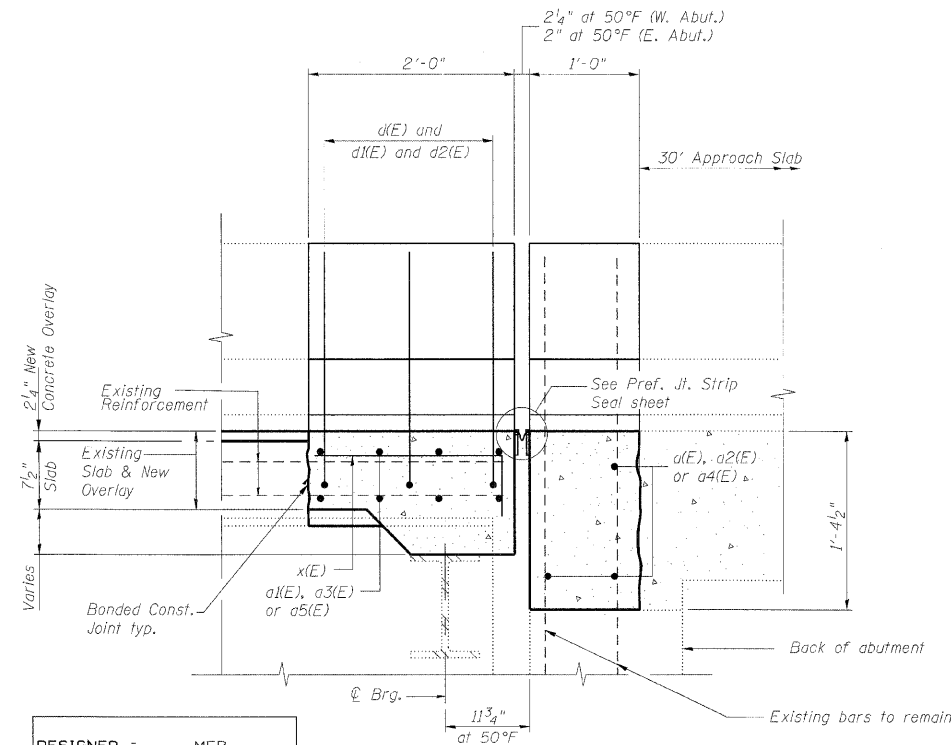
STATE OF ILLINOIS  
DEPARTMENT OF TRANSPORTATION



**Notes:**

- Existing reinforcement bars extending into the concrete removal area shall be blast-cleaned, straightened and incorporated into the new construction. Any reinforcement bars that are damaged during concrete removal shall be repaired or replaced with an approved bar splicer or anchorage system. Cost included with Concrete Removal.
- Existing reinforcement bars in the concrete removal area parallel to the expansion joints shall be removed.
- Removal and disposal of the existing expansion joints will not be paid for separately, but shall be included with the cost of Concrete Removal.
- If existing name plate falls within the limits of Concrete Removal, it shall be removed and reinstalled in its original location in accordance with IDOT Std. 515001. Cost included with Concrete Superstructure.
- If existing guardrail and/or end shoe fall within the limits of Concrete Removal, they shall be removed and reinstalled in their original location in accordance with District 1 Std. BM-21. Cost included with Concrete Superstructure.
- Work this sheet with Expansion Joint Repairs sheet.

SECTION A-A



EXISTING EXTERIOR PARAPET SECTION

PROPOSED EXTERIOR PARAPET SECTION

DESIGNED -	MFB
CHECKED -	KWS
DRAWN -	VH
CHECKED -	KWS

SECTION B-B

**benesch**

alfred benesch & company  
Engineers • Surveyors • Planners  
205 North Michigan Avenue, Suite 2400  
Chicago, Illinois 60601  
312.565-0450 Job No. 10050

SHEET NO. 6 9 SHEETS	F.A.I. RTE. 290	SECTION 221, 1-1, 2&3RS-7	COUNTY DUPAGE	TOTAL SHEETS 546	SHEET NO. 314
	CONTRACT NO. 60G51			FED. ROAD DIST. NO. ILLINOIS FED. AID PROJECT	

EXPANSION JOINT DETAILS  
STRUCTURE NO. 022-0096