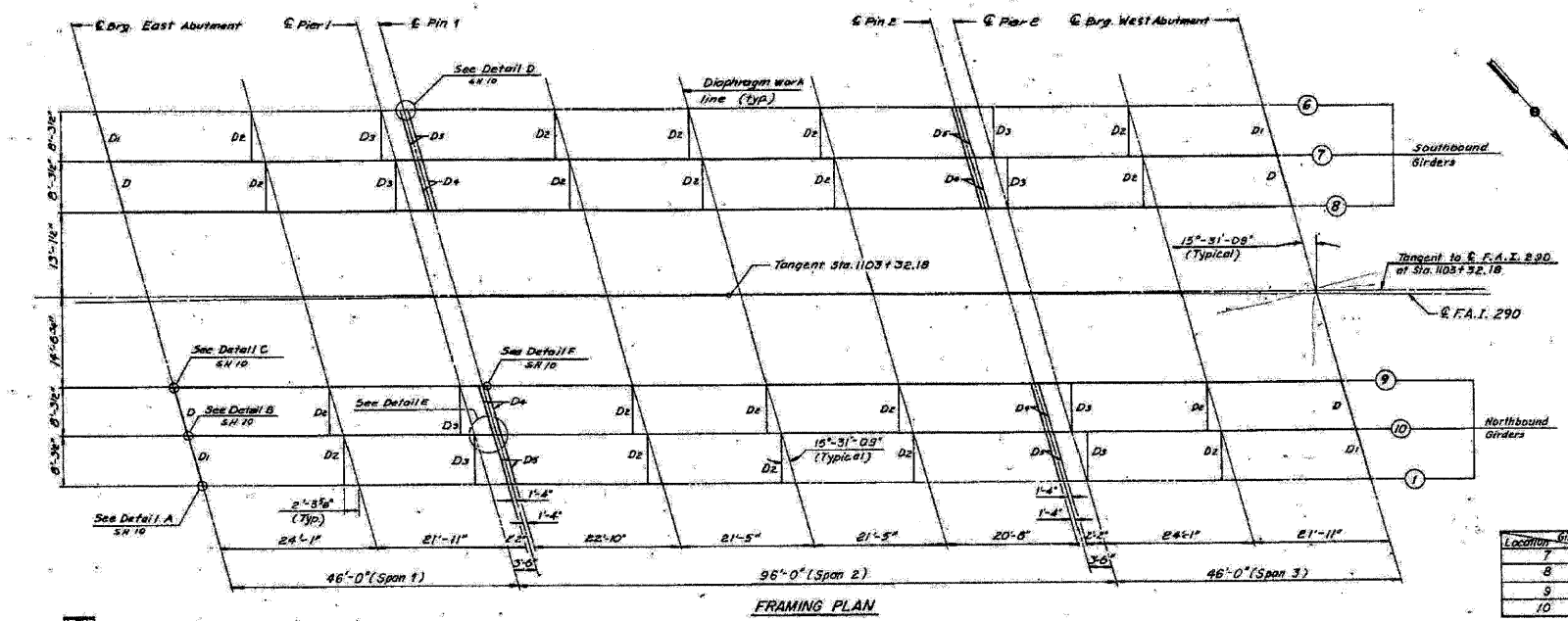


STATE OF ILLINOIS
DEPARTMENT OF TRANSPORTATION

ROUTE NO.	SECTION	COUNTY	TOTAL SHEETS	SHEET NO.	SHEET NO. OF 10 SHEETS
FAL 290	1984-W	DUPAGE	108	B-4	
FED. ROAD DIST. NO. 7	ILLINOIS	FEDERAL AID PROJECT NO.			



INTERIOR GIRDER MOMENT TABLE

Span	Pier	0.5 Span
1/2 (ft)	137.2	24.356
1/2 (in)	25.072	
S ₁ (in)	547	1,249
S ₂ (in)	547	1,820
R (ft)	1.327	1.083
M ₁ (K)	261	1,092
M ₂ (K)	5.75	10.33
S ₃ (in)		0.31
M ₃ (K)		317
M ₄ (K)	406	937
M ₅ (K)	129	297
M ₆ (K)	535	1,551
F ₅ (K/ft)	11.74	10.23
F ₅ Total (K)	17.47	20.56
V _R (K)		61.0

INTERIOR GIRDER REACTION TABLE

Location	Abut.	Pier
R ₁ (K)	26.4	101.0
R ₂ (K)	43.7	56.3
R ₃ (K)	13.2	14.8
R ₄ (K)	82.3	171.1

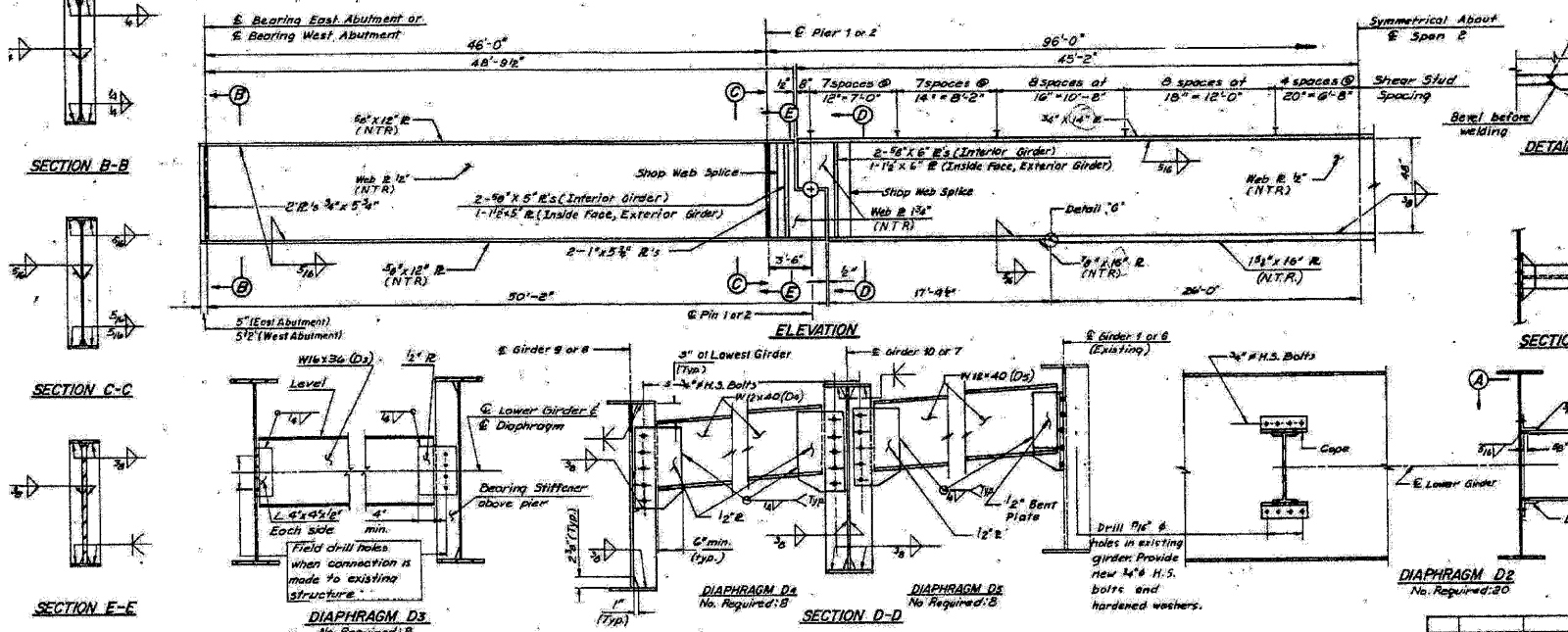
* TOP OF WEB ELEVATIONS

Location	Girder	Abut. East	Pier 1	Pier 2	Pier 3	Abut. West
7		698.91	698.70	698.68	698.28	698.26
8		698.61	698.40	698.38	697.97	697.96
9		700.91	700.69	700.67	700.25	700.24
10		700.58	700.36	700.34	699.93	699.91

* For Fabrication Only

Notes:

- I_x and I_y are the moment of inertia and section modulus of the steel section used in computing I_s non-comp.
- I_c and I_c are the moment of inertia and section modulus of the complete section used in computing I_s comp.
- V_R is the maximum +ve impact shear range in span. * is the superimposed wheel load.
- * is the hole shall be drilled for all 3/4" H.S. Bolts.
- The interior corners of all stiffeners shall be clipped 1" Horiz. x 2" Vertically for additional details, see Sheets 10 and 11.
- NTR Denotes Plates to which Notch Toughness Requirements are applicable.
- One hardened washer shall be required over each 3/4" hole.
- indicates existing structure
- Plate girders shall not be cambered in Spans 1 and 3. Plate girders shall be cambered in Span 2 between Pier 1 and Pier 2. See sheet 5.



DATE 7-16-81 CHECKED DATE 3-8-85

HNTB

No. Required: 2

FOR INFORMATION ONLY

benesch

alfred benesch & company
Engineers - Surveyors - Planners
205 North Michigan Avenue, Suite 2400
Chicago, Illinois 60601
312-666-0450 Job No. 10050

SHEET NO. 11	F.A.I. RTE. 290	SECTION 22(1, 1-1, 2&3)RS-7	COUNTY DUPAGE	TOTAL SHEETS 546	SHEET NO. 328
12 SHEETS	CONTRACT NO. 60G51		FED. ROAD DIST. NO. ILLINOIS FED. AID PROJECT		

EXISTING PLAN INFORMATION 1 OF 2
STRUCTURE NO. 022-0100

x:\110000s\110050\engineer\ing_documents\contract\1\SN_022-0100_0105_Wooddale.Rd\0100-60G51-011-exis.plan_01.dgn 18:05:00 11/2/2009