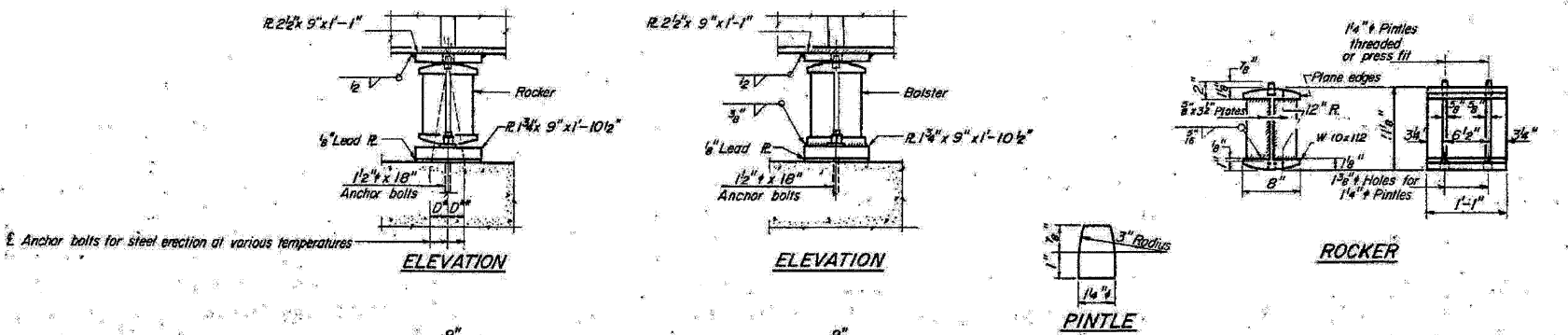


STATE OF ILLINOIS
DEPARTMENT OF TRANSPORTATION

| | | | | | |
|-----------------------|-------------|-------------------------|--------------|-----------|------------------------|
| ROUTE NO. | SECTION | COUNTY | TOTAL SHEETS | SHEET NO. | SHEET NO. OF 18 SHEETS |
| F.A.I. RTE. 290 | 1984-079B-W | DUPAGE | 546 | 329 | |
| FED. ROAD DIST. NO. 7 | ILLINOIS | FEDERAL AID PROJECT NO. | | | |



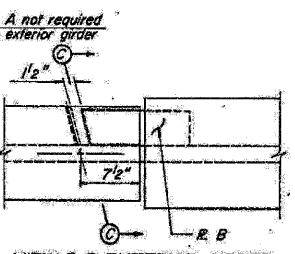
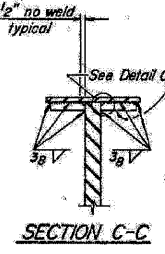
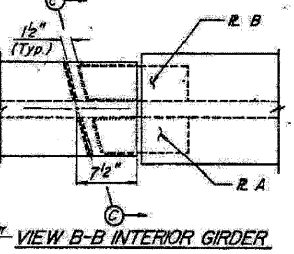
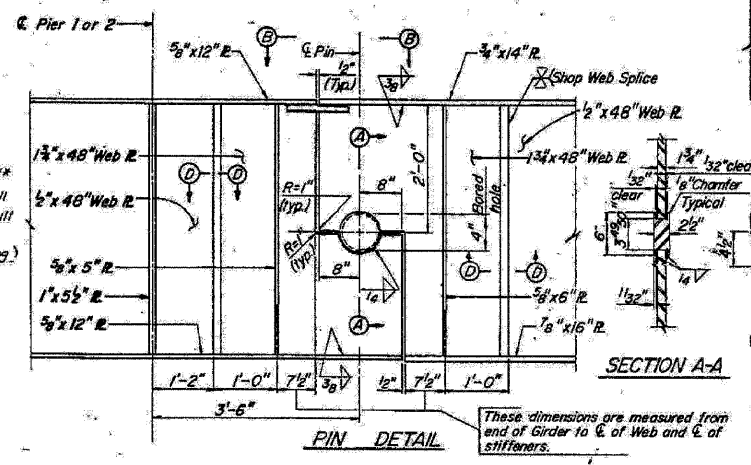
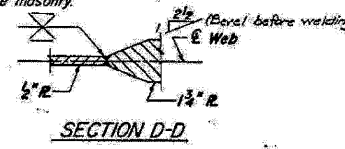
NOTE B
2" # Holes for 1/2" # anchor bolts, 5/16" x 3 x 3" E. Washers under nut.

NOTE A
1 3/8" # Holes - 1" deep in top R. for pindles. Thread or press fit pindles into bottom R.

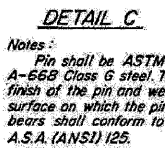
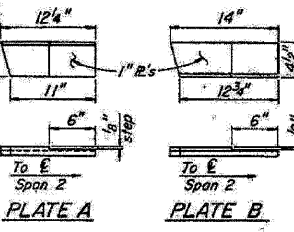
NOTE C
1 3/8" # Holes 1" deep in top R. only for 1/4" # pindles

NOTES ON SETTING OF ANCHOR BOLTS AT EXP. BRGS.

- a) D* (Side of brg. away from fixed brg.)
D** = 1/8" per each 100' of expansion for every 15° fall below the normal temp. of 50°F.
- D** (Side of brg. toward fixed brg.)
D** = 1/8" per each 100' of expansion for every 15° rise above the normal temp. of 50°F.
- b) After beams have been erected and dimensions D* or D** determined, holes shall be drilled and anchor bolts shall be grouted in place. All fixed anchor bolts may be built into the masonry.



Note: For location of Structural Steel Details, see Sheet No. 9.



Notes:
Pin shall be ASTM A-668 Class 6 steel. The finish of the pin and web surface on which the pin bears shall conform to A.S.A. (ANSI) 125.

HNTB
DATE: A.C.P. DATE: 6-10-81 CHECKED: DATE: 3-8-85

REVISED 4/17/85 M.K.C. 022-0100 SHEET 88 OF 109

FOR INFORMATION ONLY

benesch
alfred benesch & company
Engineers • Surveyors • Planners
205 North Michigan Avenue, Suite 2400
Chicago, Illinois 60601
312-565-0450 Job No. 10050

EXISTING PLAN INFORMATION 2 OF 2
STRUCTURE NO. 022-0100

| | | | | | |
|---------------------------|--------------------|-----------------------------|------------------|------------------|---------------|
| SHEET NO. 12 12 SHEETS | F.A.I. RTE. 290 | SECTION 22(1, 1-1, 2&3)RS-7 | COUNTY DUPAGE | TOTAL SHEETS 546 | SHEET NO. 329 |
| | CONTRACT NO. 60G51 | | | | |
| FED. ROAD DIST. NO. | | ILLINOIS | FED. AID PROJECT | | |

18:05:02 x:\100005\100050\eng\engineer\ng_documents\contract\1\SN_022_0100_0105_Wooddale.Rd\1000-60G51-012-ex1s1plan_02.dgn 11/12/2009