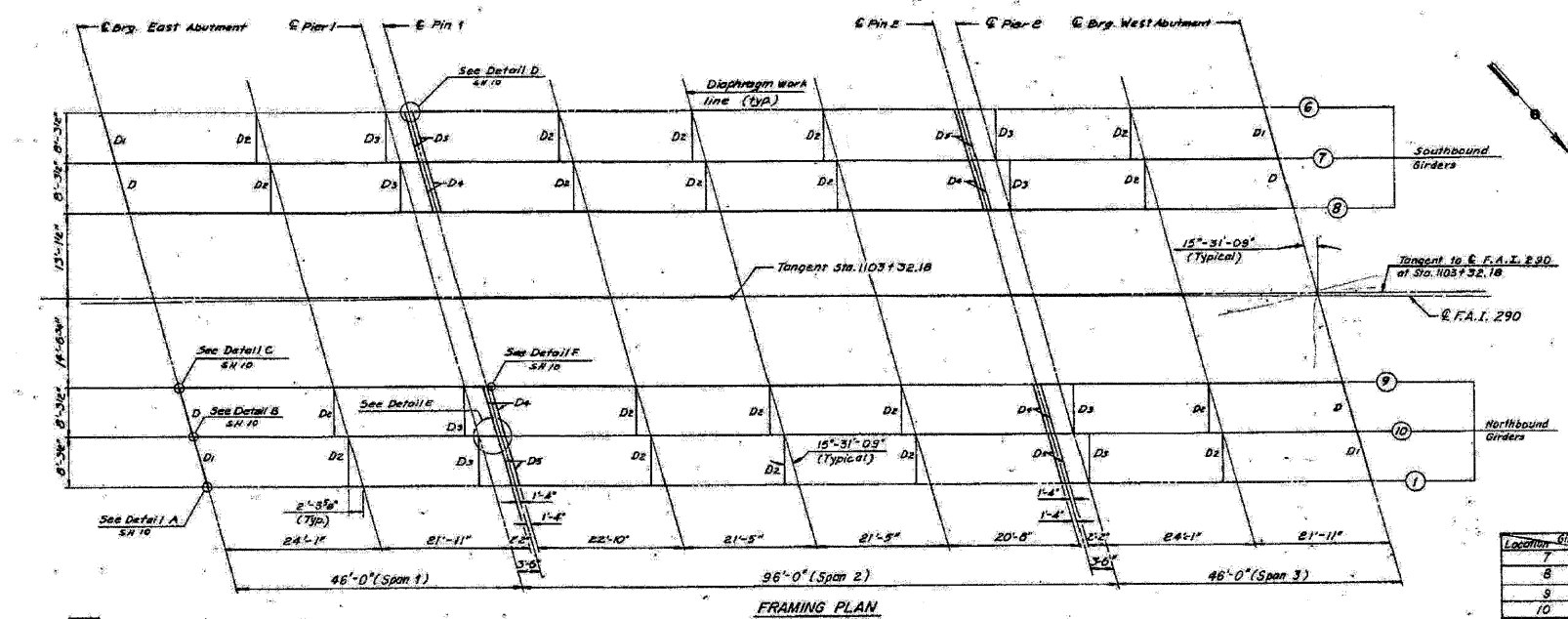


STATE OF ILLINOIS
DEPARTMENT OF TRANSPORTATION

ROUTE NO.	SECTION	COUNTY	TOTAL SHEETS	SHEET NO.	SHEET NO. OF 18 SHEETS
290	1984-0798-W	DUPAGE	109	84	
FED. ROAD DIST. NO. 7 ILLINOIS			FEDERAL AID PROJECT NO.		



INTERIOR GIRDER MOMENT TABLE

0.45 Span 1 / 0.6 Span 3	Pier	0.5 Span 2	
I_x (in ⁴)	13475	13475	24,356
I_y (in ⁴)			75,072
S_x (in ³)	547	547	1,267
S_y (in ³)			1,820
r_x (in)	1.327	1.327	1.083
r_y (in)	261	196	1,092
R_{xcomp}	5.75	4.37	10.55
S_x (in ³)			0.31
R_x (in)	406	140	937
R_y (in)	129	45	297
Max (in)	535	185	1,551
F_s (ksi)	11.74	4.06	10.23
F_s total (ksi)	17.47	8.37	20.56
V_R (k)			61.0

INTERIOR GIRDER REACTION TABLE

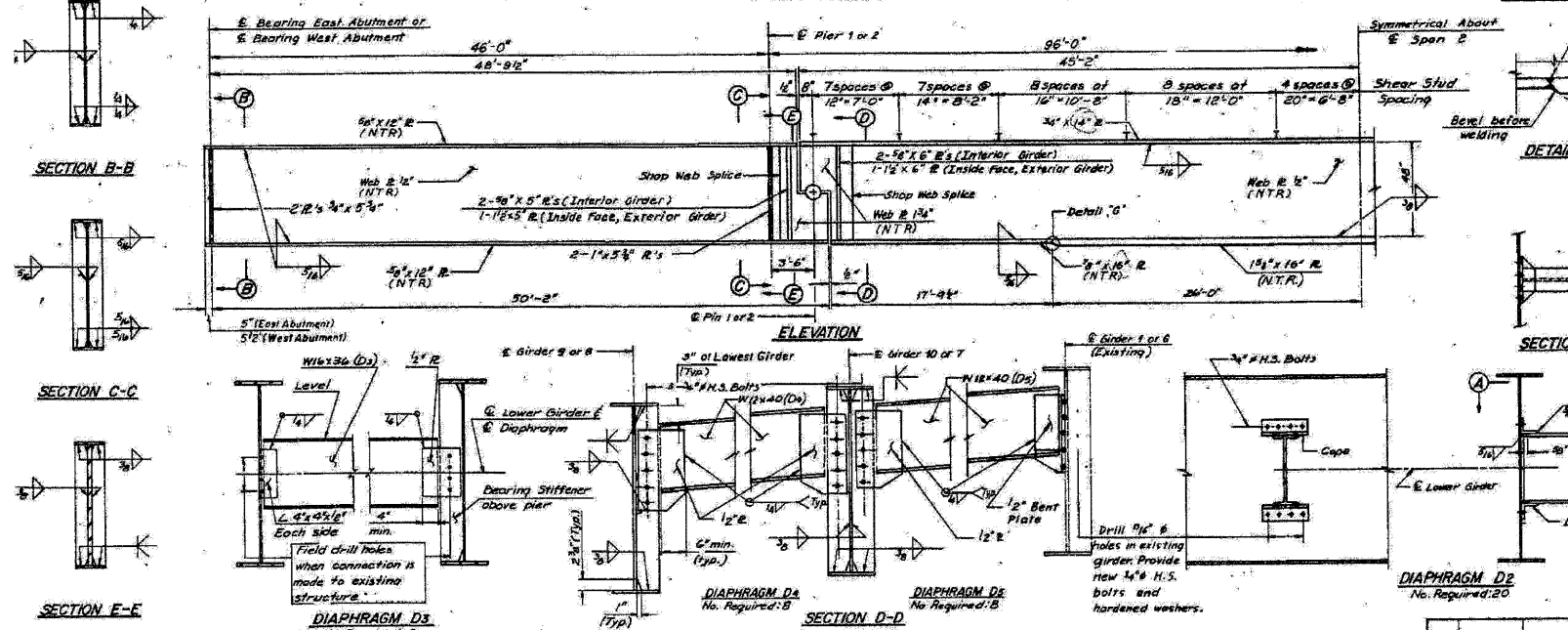
	Abut.	Pier
R_g (k)	26.4	101.0
R_L (k)	43.3	53.3
R_{Tmax} (k)	12.6	14.8
R_{Tmin} (k)	82.3	171.1

* TOP OF WEB ELEVATIONS

Location	Girder	0.45 Span 1	0.6 Span 3	Pier	0.5 Span 2	0.6 Span 3	0.45 Span 1
7		698.91	698.70	698.68	698.28	698.26	698.05
8		698.61	698.40	698.38	697.97	697.96	697.74
9		700.91	700.69	700.67	700.25	700.24	700.02
10		700.58	700.36	700.34	699.92	699.91	699.69

* For Fabrication Only

Notes:
 I_x and I_y are the moment of inertia and section modulus of the steel section used in computing f_s non-comp.
 I_c and I_y are the moment of inertia and section modulus of the composite section used in computing f_s comp.
 V_R is the maximum \pm impact shear range in span. R_L is the superimposed dead load.
 5/8" Holes shall be drilled for all 3/4" H.S. Bolts.
 The interior corners of all stiffeners shall be clipped 1/8" x 2 1/4" vertically for additional details, see Sheets 10 and 11.
 NTR Denotes Plates to which Notch Toughness Requirements are applicable.
 One hardened washer shall be required over each 3/4" hole.
 --- indicates existing structure
 Plate girders shall not be cambered in Spans 1 and 3. Plate girders shall be cambered in Span 2 between Pier 1 and Pier 2. See sheet 5.



DATE: 7-16-81 CHECKED: DATE: 3-8-85

FOR INFORMATION ONLY

benesch
 alfred benesch & company
 Engineers • Surveyors • Planners
 205 North Michigan Avenue, Suite 2400
 Chicago, Illinois 60601
 312-565-0450 Job No. 10050

SHEET NO. 11	F.A.I. RTE. 290/355	SECTION 22(1, 1-1, 2&3)RS-7	COUNTY DUPAGE	TOTAL SHEETS 546	SHEET NO. 340
12 SHEETS	CONTRACT NO. 60G51		FED. ROAD DIST. NO. ILLINOIS FED. AID PROJECT		

EXISTING PLAN INFORMATION 1 OF 2
STRUCTURE NO. 022-0105

18:06:13 I:\100005\100950\eng\engineering\documents\contract\1\SN_022_0105_0105_wooddale_ra\0105-60G51-011-exstplan_01.dgn