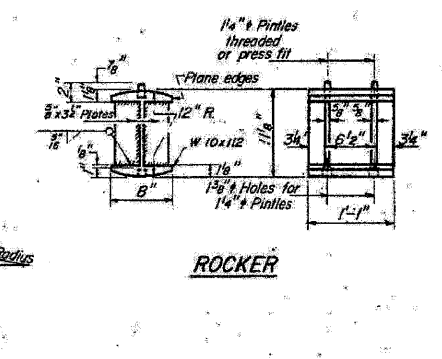
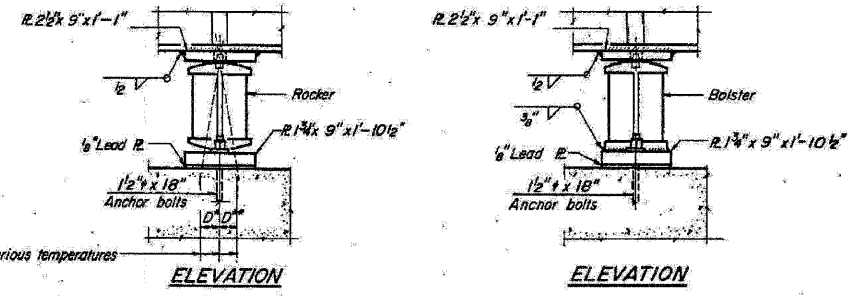


STATE OF ILLINOIS
DEPARTMENT OF TRANSPORTATION

ROUTE NO.	SECTION	COUNTY	TOTAL SHEETS	SHEET NO.	SHEET NO. OF IN SHEETS
FAI 290	22(1, 1-1, 2&3)RS-7	DUPAGE	546	341	341
FED. ROAD DIST. NO. 7	ILLINOIS	FED. AID PROJECT NO.			



NOTE B
2" # Holes for 1/2" # anchor bolts, 5/16" x 3 x 3" E. Washers under nut.

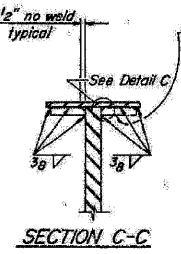
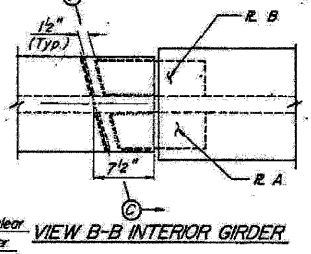
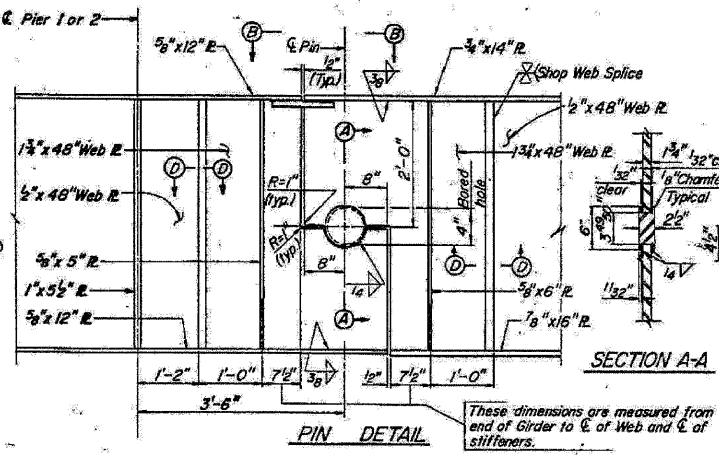
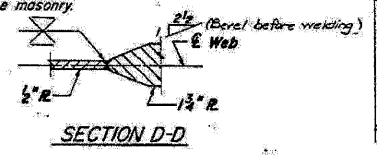
NOTE A
1 3/8" # Holes - 1" deep in top R. for purlins. Thread or press fit purlins into bottom R.

NOTE C
1 3/8" # Holes 1" deep in top R. only for 1/4" # purlins

NOTES ON SETTING OF ANCHOR BOLTS AT EXP. BRGS.

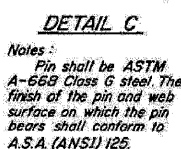
- a) D* (Side of brg. away from fixed brg.)
D* = 1/8" per each 100' of expansion for every 15° fall below the normal temp. of 50°F.
- D** (Side of brg. toward fixed brg.)
D** = 1/8" per each 100' of expansion for every 15° rise above the normal temp. of 50°F.

b) After beams have been erected and dimensions D* or D** determined, holes shall be drilled and anchor bolts shall be grouted in place. All fixed anchor bolts may be built into the masonry.



VIEW B-B EXTERIOR GIRDER

Note:
For location of Structural Steel Details, see Sheet No. 9.



Notes:
Pin shall be ASTM A-660 Class 6 steel. The finish of the pin and web surface on which the pin bears shall conform to A.S.A. (ANSI) 125.

STATE OF ILLINOIS
DEPARTMENT OF TRANSPORTATION

STRUCTURAL STEEL DETAILS AND BEARING DEVICES AT PIERS

FAI ROUTE 290, DUPAGE COUNTY
SECTION 1984-079B-W
STA. 1103+32.18
INTERSTATE ROUTE 290 OVER
WOOD DALE ROAD

REVISED 4/17/85 M.K.C. 022-0100 SHEET 35 OF 109

FOR INFORMATION ONLY

benesch

alfred benesch & company
Engineers - Surveyors - Planners
205 North Michigan Avenue, Suite 2400
Chicago, Illinois 60601
312-565-0450 Job No. 10050

SHEET NO. 12	F.A.I. RTE. 290	SECTION 22(1, 1-1, 2&3)RS-7	COUNTY DUPAGE	TOTAL SHEETS 546	SHEET NO. 341
12 SHEETS	CONTRACT NO. 60G51		FED. ROAD DIST. NO. ILLINOIS FED. AID PROJECT		

x:\10000s\10050\engineer\ing-documents\contract\1\SN.022-0100.0105.Wooddale.Rd\0105.60G51-012-exists\plan-02.dgn 18:06:15 11/12/2009