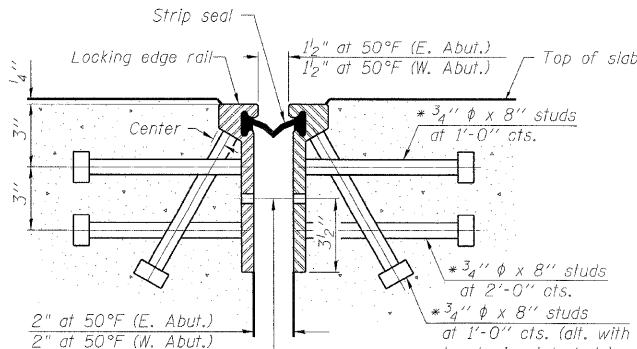


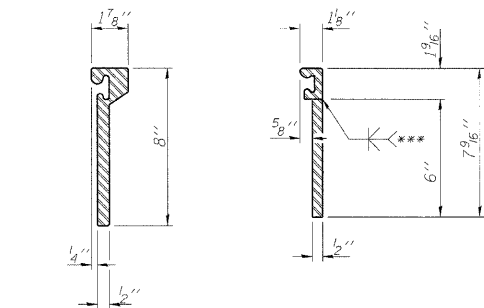
STATE OF ILLINOIS
DEPARTMENT OF TRANSPORTATION

* Granular or solid flux filled headed studs conforming to Article 1006.32 of the Std. Specs., automatically end welded.

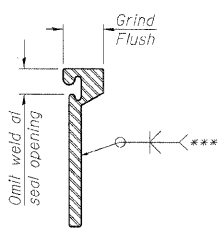


7/16" ϕ holes at 4'-0" cts. for 3/8" ϕ bolts. All bolts shall be burned, sawed, or chipped off flush with the plates after forms are removed, typ.

SECTION THRU
ROLLED RAIL JOINT



ROLLED EXTRUDED RAIL WELDED RAIL

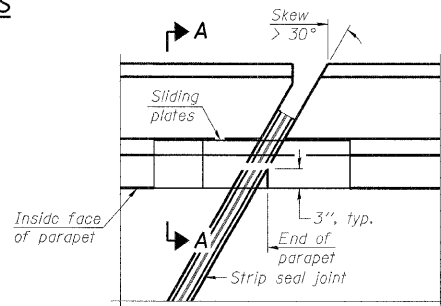


***Back gauge not required if complete joint penetration is verified by mock-up.

LOCKING EDGE RAIL SPLICE

The inside of the locking edge rail groove shall be free of weld residue.

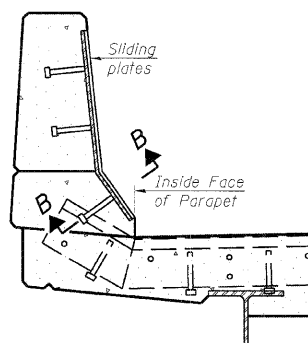
LOCKING EDGE RAILS



PLAN

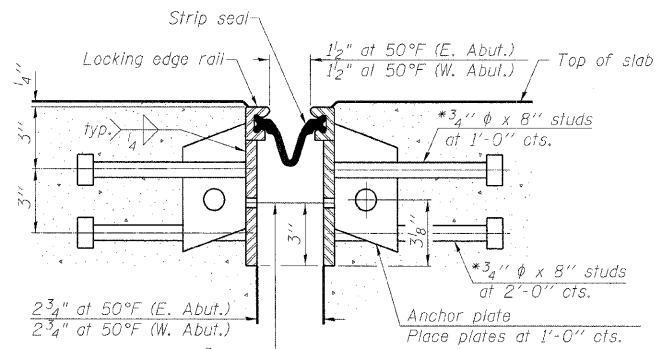
SECTION A-A

POINT BLOCK DETAILS
(for skews > 30°)



SECTION A-A

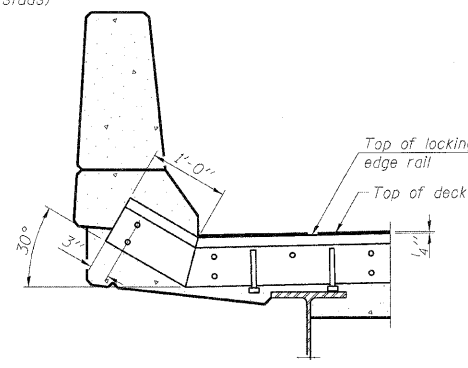
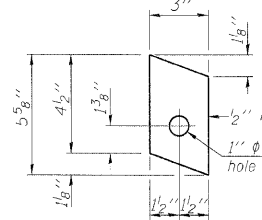
SECTION THRU WELDED RAIL JOINT



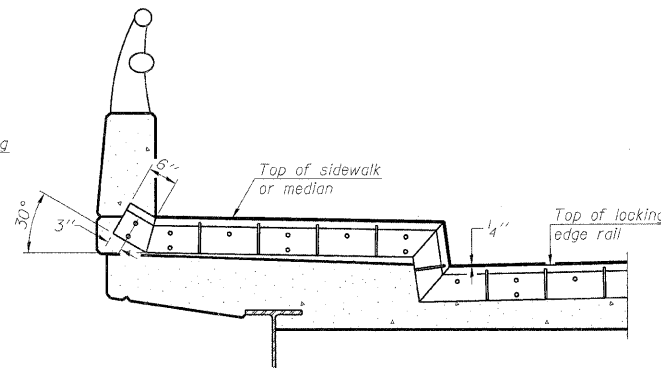
7/16" ϕ holes at 4'-0" cts. for 3/8" ϕ bolts. All bolts shall be burned, sawed, or chipped off flush with the plates after forms are removed, typ.

SECTION THRU WELDED RAIL JOINT

ANCHOR PLATE
(for welded rail)



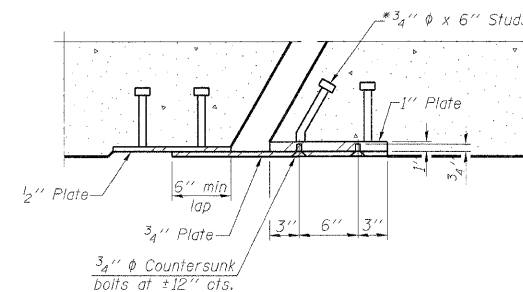
AT PARAPET



AT SIDEWALK OR MEDIAN

Shorter plates with a single row of studs at 12" cts. may be necessary on medians which are shallower than 9". See manufacturer's recommendation.

TYPICAL END TREATMENTS



SECTION B-B

BILL OF MATERIAL

Item	Unit	Total
Preformed Joint Strip Seal	Foot	145.0

DESIGNED	TJJ
CHECKED	AAV
DRAWN	RMG
CHECKED	AAV

EJ-SSJ

10-1-08

benesch

alfred benesch & company
Engineers - Surveyors - Planners
205 North Michigan Avenue, Suite 2400
Chicago, Illinois 60601
312-688-0450 Job No. 10050

SHEET NO.	F.A.I. RTE.	SECTION	COUNTY	TOTAL SHEETS	SHEET NO.
7	290	22(1, 1-1, 2&3)RS-7	DUPAGE	546	356
8 SHEETS					
CONTRACT NO. 60G51					
FED. ROAD DIST. NO. ILLINOIS FED. AID PROJECT					

PREFORMED JOINT STRIP SEAL
STRUCTURE NO. 022-0104