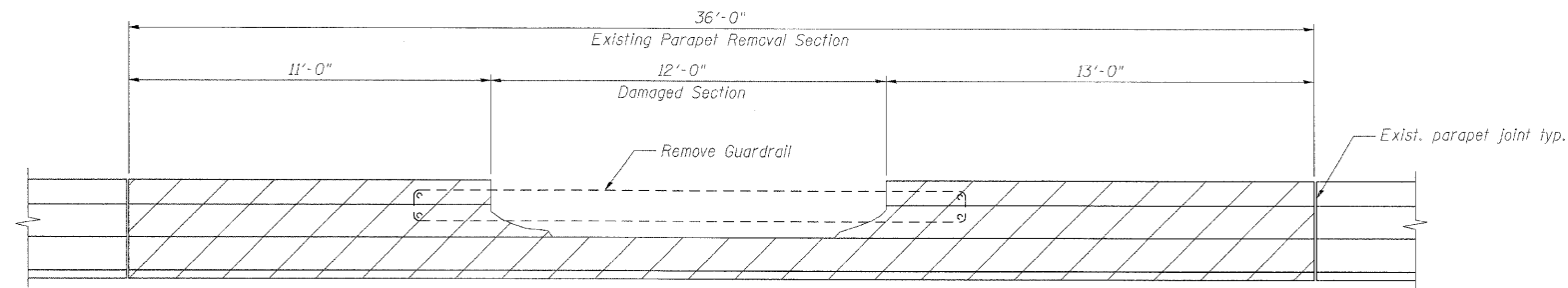


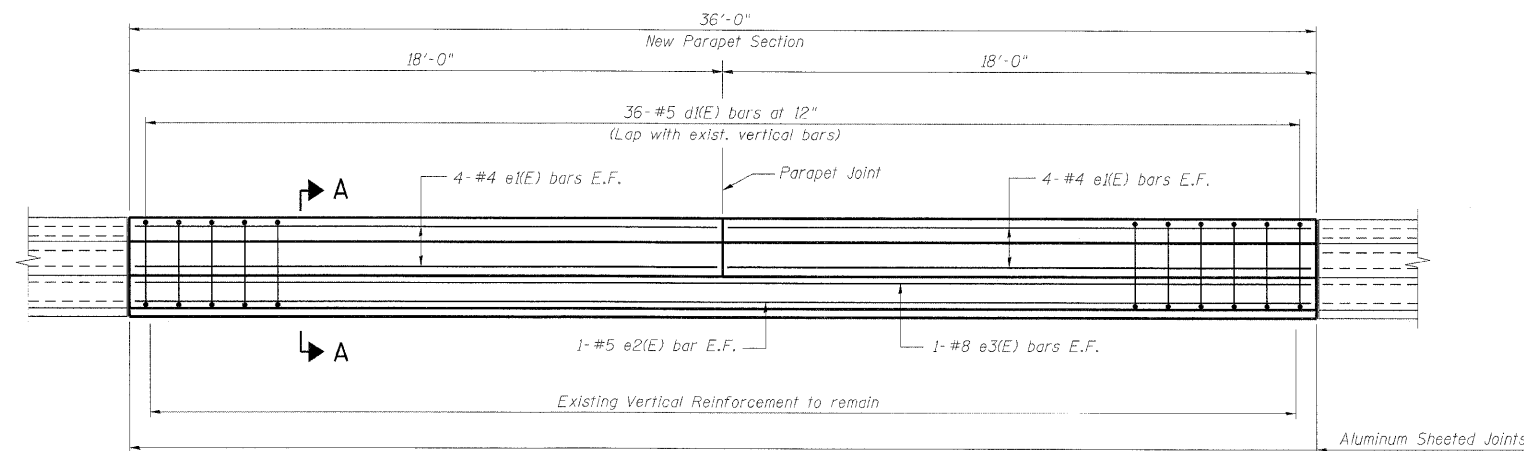
STATE OF ILLINOIS  
DEPARTMENT OF TRANSPORTATION

**BILL OF MATERIAL**

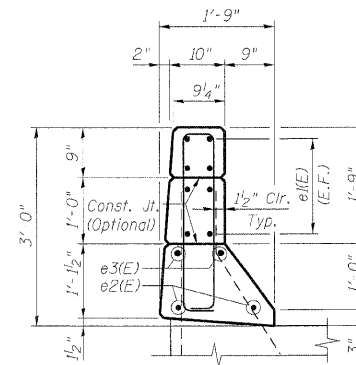
Bar	No.	Size	Length	Shape
d(E)	36	#5	6'-9"	
e1(E)	16	#4	17'-8"	
e2(E)	2	#5	35'-8"	
e3(E)	2	#8	35'-8"	
Item	Unit	Total		
Concrete Removal	Cu. Yd.	3.7		
Concrete Superstructure	Cu. Yd.	3.7		
Reinforcement Bars, Epoxy Coated	Pound	710		



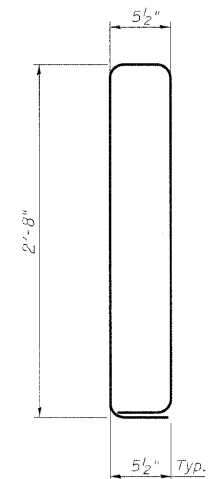
**ELEVATION - EXIST. PARAPET**  
(Inside Elevation)



**ELEVATION - PROPOSED PARAPET**



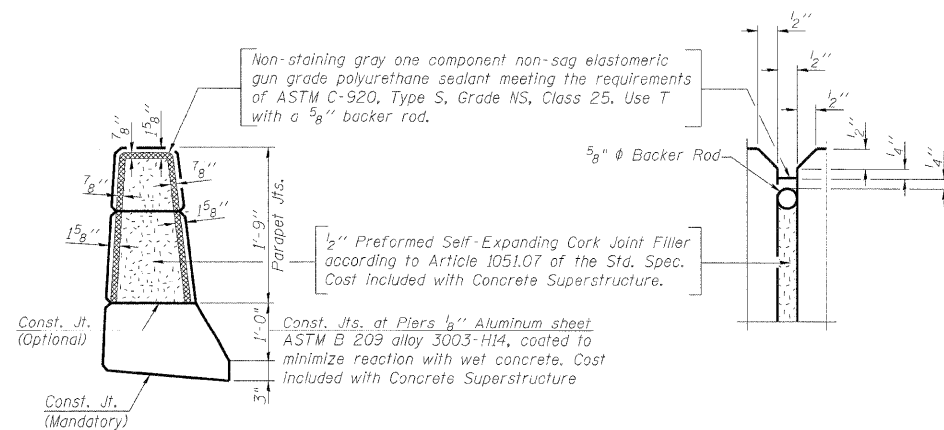
**SECTION A-A**



**BAR d(E)**

**Notes:**

- Existing reinforcement bars extending into the concrete removal area shall be cleaned, straightened and incorporated into the new construction. Any reinforcement bars that are damaged during concrete removal shall be replaced with an approved bar splicer or anchorage system. Cost included with Concrete Removal.
- Existing horizontal reinforcement bars in the concrete removal area shall be removed.
- Existing guardrail shall be removed and disposed of. Cost is included with Concrete Removal.
- Protective shield required for concrete removal shall be installed according to Article 501.03 of the Standard Specifications. Cost of Protective Shield is included with Concrete Removal.
- E.F. denotes Each Face.



**PARAPET JOINT DETAILS**

DESIGNED	-	TJJ
CHECKED	-	AAV
DRAWN	-	RMG
CHECKED	-	AAV

**BRIDGE PARAPET REPAIRS  
STRUCTURE NO. 022-0092**

**benesch**

alfred benesch & company  
Engineers • Surveyors • Planners  
205 North Michigan Avenue, Suite 2400  
Chicago, Illinois 60601  
312-565-0480 Job No. 10050

SHEET NO. 6 10 SHEETS	F.A.I. RTE. 290	SECTION 22(1, 1-1, 2&3)RS-7	COUNTY DUPAGE	TOTAL SHEETS 546	SHEET NO. 371
	CONTRACT NO. 60G51			FED. ROAD DIST. NO. ILLINOIS FED. AID PROJECT	

x:\10000s\10050\engineer\ing\_documents\contract\1\SN.022.0092.1355\0092-60G51-005-parapetrepair.dgn 180831 11/12/2009