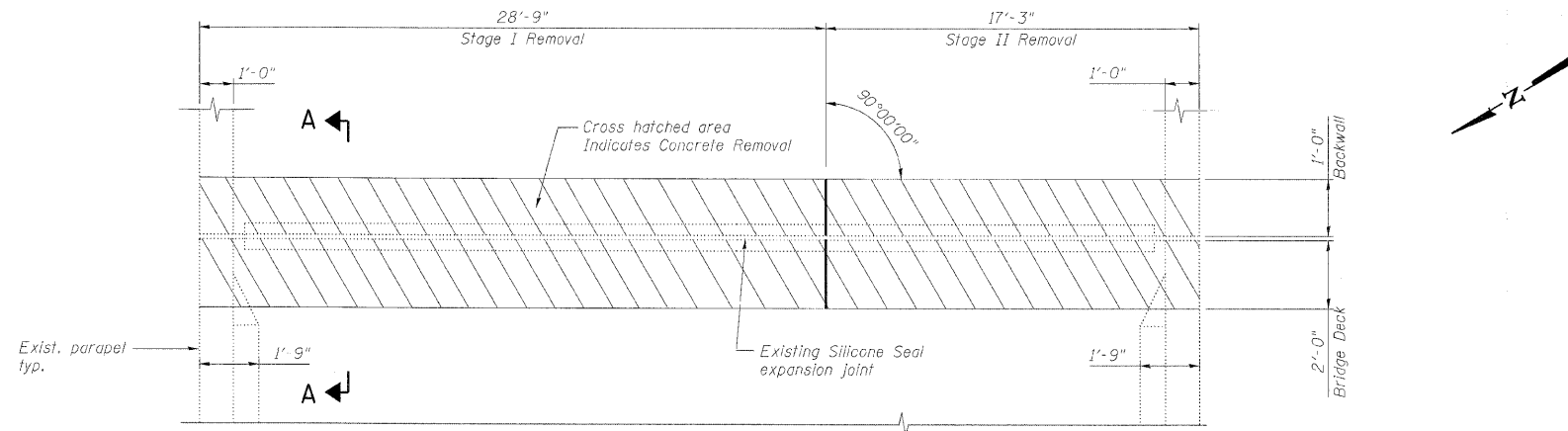
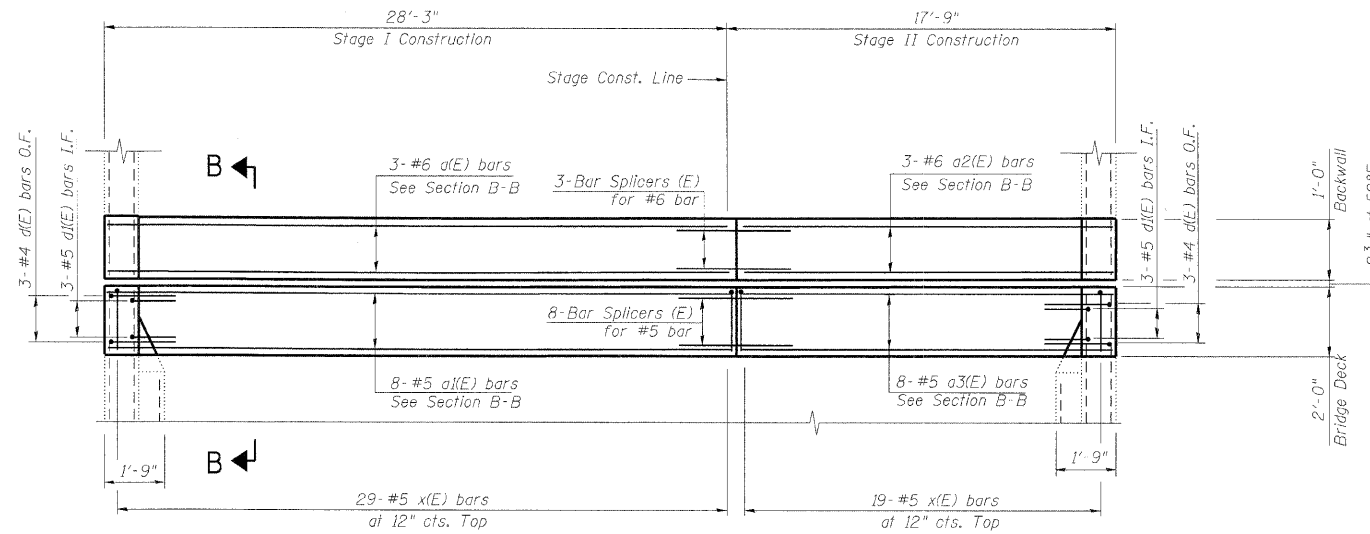


STATE OF ILLINOIS
DEPARTMENT OF TRANSPORTATION



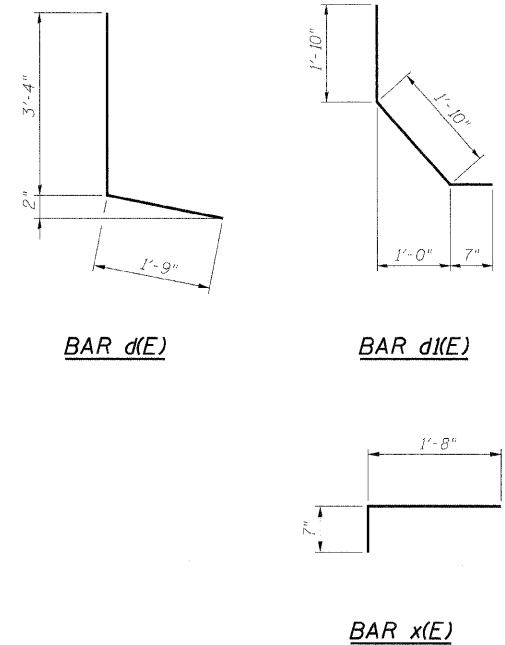
EXISTING PARTIAL PLAN AT SOUTH ABUTMENT



PROPOSED PARTIAL PLAN AT SOUTH ABUTMENT

BILL OF MATERIAL

Bar	No.	Size	Length	Shape
a1(E)	3	#6	27'-11"	—
a2(E)	8	#5	27'-11"	—
a3(E)	3	#6	17'-5"	—
	8	#5	17'-5"	—
d(E)	6	#4	5'-1"	┌
d1(E)	6	#5	4'-3"	└
x(E)	48	#5	2'-3"	┌
Item	Unit	Total		
Concrete Removal	Cu. Yd.	7.1		
Concrete Superstructure	Cu. Yd.	7.1		
Reinforcement Bars, Epoxy Coated	Pound	750		



Notes:

- I.F. denotes Inside Face.
O.F. denotes Outside Face.
- Work this sheet with Expansion Joint Details sheet and Bar Splicer Assembly Details sheet.

DESIGNED	JLS
CHECKED	AAV
DRAWN	VH
CHECKED	AAV

benesch

alfred benesch & company
Engineers • Surveyors • Planners
205 North Michigan Avenue, Suite 2400
Chicago, Illinois 60601
312-565-0450 Job No. 10050

SHEET NO. 7 10 SHEETS	F.A.I. RTE. 290 355	SECTION 221, 1-1, 2&3RS-7	COUNTY DUPAGE	TOTAL SHEETS 546	SHEET NO. 372
	CONTRACT NO. 60G51				
FED. ROAD DIST. NO.		ILLINOIS	FED. AID PROJECT		

EXPANSION JOINT REPAIRS
STRUCTURE NO. 022-0092