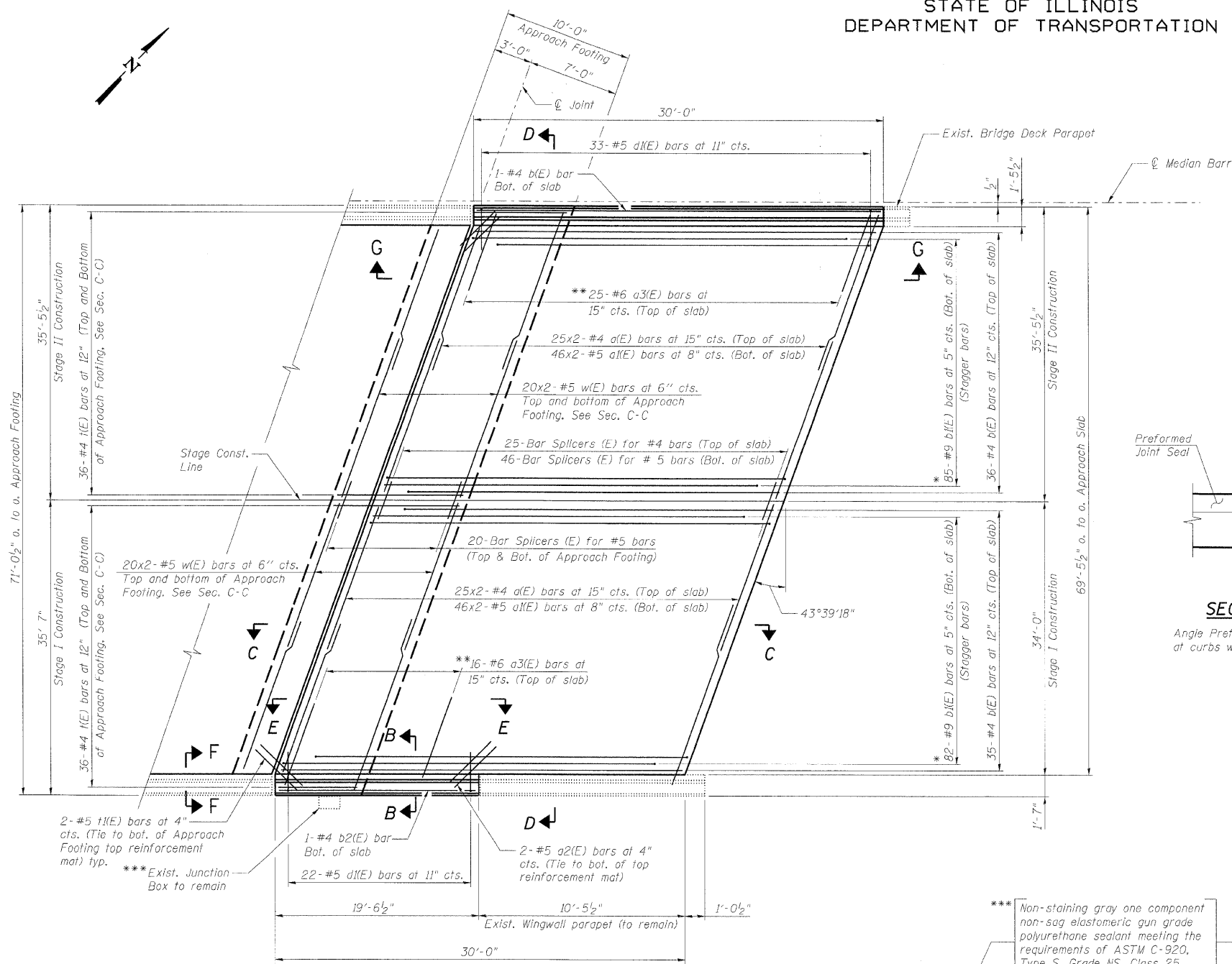
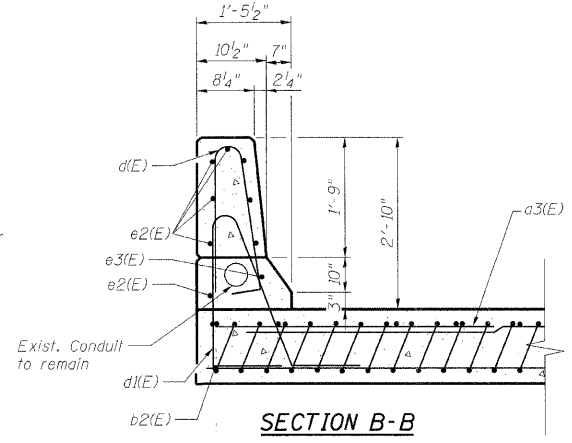


STATE OF ILLINOIS  
DEPARTMENT OF TRANSPORTATION

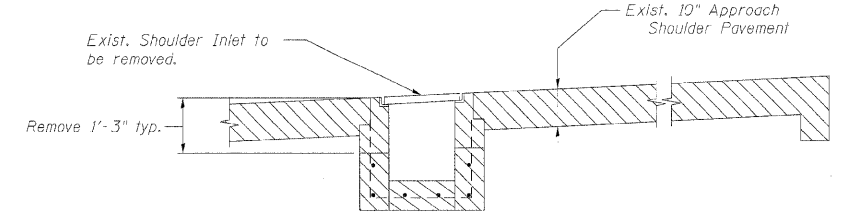


PLAN - MAINLINE

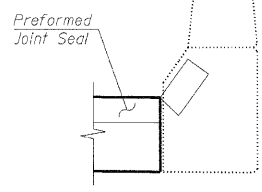


SECTION B-B

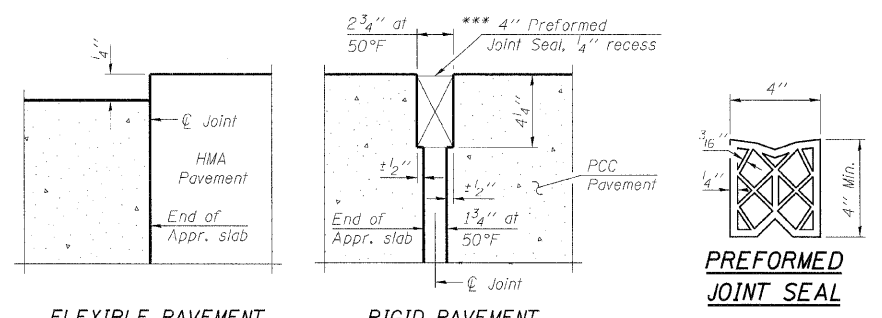
\* Tilt bars as required to maintain clearance.  
\*\* Alternate with d(E) or a4(E) bars.  
\*\*\* Cost included with Concrete Superstructure.



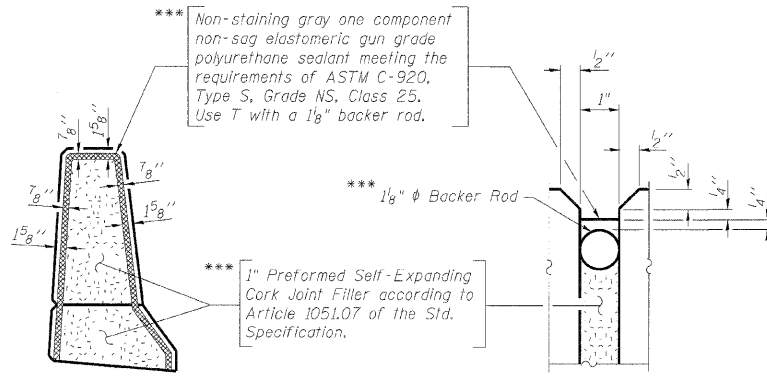
APPROACH SLAB REMOVAL DETAIL AT INLET



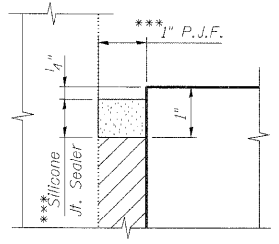
SECTION F-F



DETAIL 3



DETAIL 2



DETAIL 1

DESIGNED	JLS/MFB
CHECKED	KWS
DRAWN	RMG
CHECKED	KWS

Note:  
Work this sheet with South Bridge Approach Slab Details (2 of 3) and (3 of 3) sheets.

SOUTH BRIDGE APPROACH SLAB DETAILS  
(1 of 3)  
STRUCTURE NO. 022-0138

benesch

alfred benesch & company  
Engineers • Surveyors • Planners  
205 North Michigan Avenue, Suite 2400  
Chicago, Illinois 60601  
312-666-0460 Job No. 10060

SHEET NO. 6 38 SHEETS	F.A.I. RTE. 290 355	SECTION 22(1, 1-1, 2&3)RS-7	COUNTY DUPAGE	TOTAL SHEETS 546	SHEET NO. 381
	CONTRACT NO. 60G51			FED. ROAD DIST. NO. ILLINOIS FED. AID PROJECT	