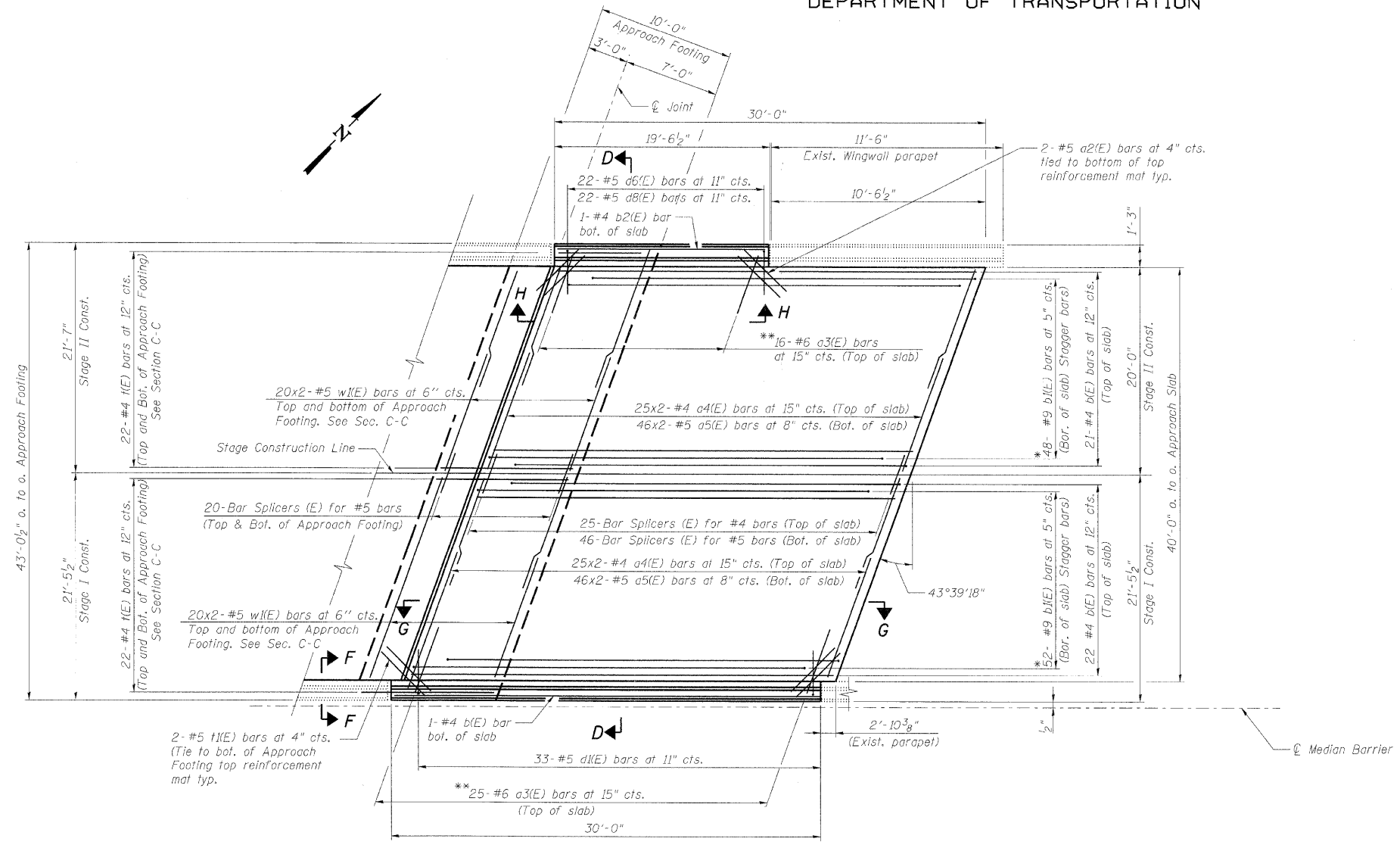
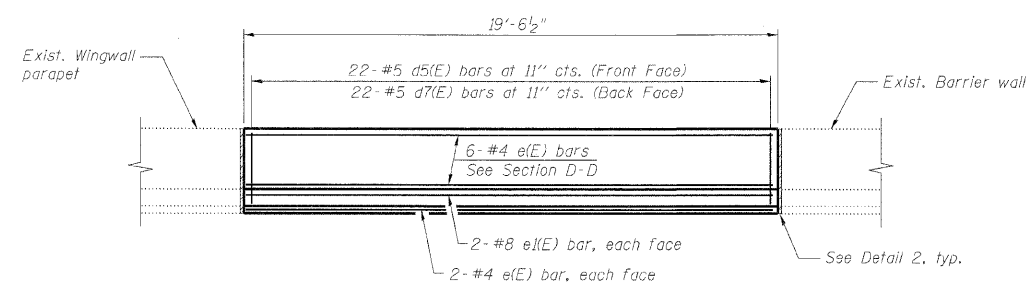


STATE OF ILLINOIS
DEPARTMENT OF TRANSPORTATION



PLAN - RAMP H

- * Tilt bars as required to maintain clearance.
- ** Alternate with a(E) or a4(E) bars.
- *** Cost included with Concrete Superstructure.



VIEW H-H

Note:

Work this sheet with South Bridge Approach Slab Details (1 of 3) and (3 of 3) sheets.

SOUTH BRIDGE APPROACH SLAB DETAILS
(2 of 3)
STRUCTURE NO. 022-0138

DESIGNED	JLS/MFB
CHECKED	KWS
DRAWN	RMG
CHECKED	KWS

benesch

alfred benesch & company
Engineers • Surveyors • Planners
205 North Michigan Avenue, Suite 2400
Chicago, Illinois 60601
312-666-0460 Job No. 10050

SHEET NO. 7 38 SHEETS	F.A.I. RTE. 290 355	SECTION 221, 1-1, 2&3RS-7	COUNTY DUPAGE	TOTAL SHEETS 546	SHEET NO. 382
	CONTRACT NO. 60G51			FED. ROAD DIST. NO. ILLINOIS FED. AID PROJECT	

x:\10000s\100050\engineer\ing.documents\contract\1\SN.022-0138-0137_Rohlrw.ing.-rd\0138-60G51-007-Approach-2.dgn 18:09:45 11/12/2009