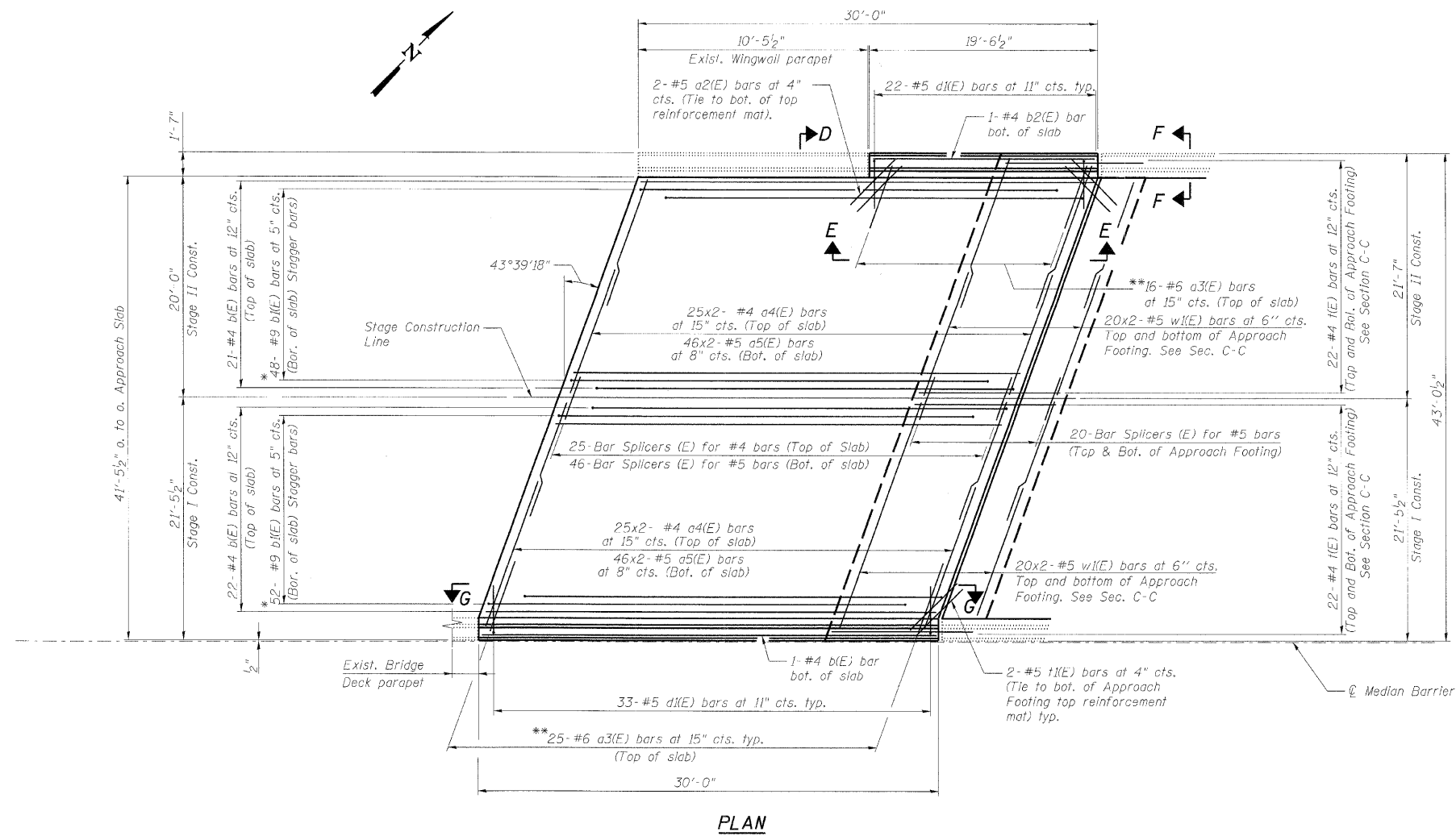
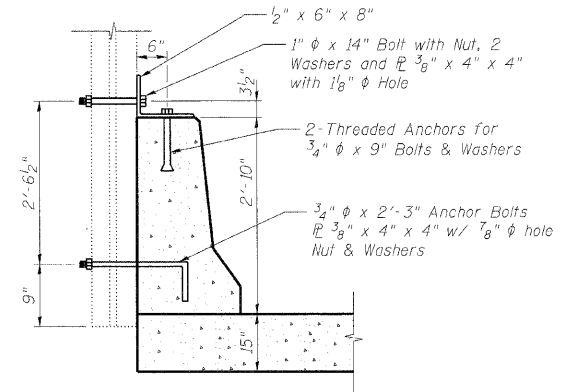


STATE OF ILLINOIS
DEPARTMENT OF TRANSPORTATION



- * Tilt bars as required to maintain clearance.
- ** Alternate with a(E) or a4(E) bars.
- *** Cost included with Concrete Superstructure.



(West Parapet Only, 3 Connections Assumed)
Locations to match existing and to be verified in the field.
Work to be performed per Art. 505 of the Std. Specs.
Cost included with Concrete Superstructure

Note:

Work this sheet with North Bridge Approach Slab Details (1 of 3) and (3 of 3) sheets.

**NORTH BRIDGE APPROACH SLAB DETAILS
(2 of 3)
STRUCTURE NO. 022-0138**

DESIGNED -	JLS/MFB
CHECKED -	KWS
DRAWN -	RMG
CHECKED -	KWS

benesch

alfred benesch & company
Engineers • Surveyors • Planners
205 North Michigan Avenue, Suite 2400
Chicago, Illinois 60601
312-565-0460 Job No. 10050

SHEET NO. 10 38 SHEETS	F.A.I. RTE. 290	SECTION 22(1, 1-1, 2&3)RS-7	COUNTY DUPAGE	TOTAL SHEETS 546	SHEET NO. 385
	CONTRACT NO. 60G51				
FED. ROAD DIST. NO.		ILLINOIS	FED. AID PROJECT		

x:\10000s\10050\engineering-documents-contract-1\SN.022-0138-0137-Rohlrwg-Rd\0138-60G51-010-Approach-.5.dgn

18:10:01

11/12/2009