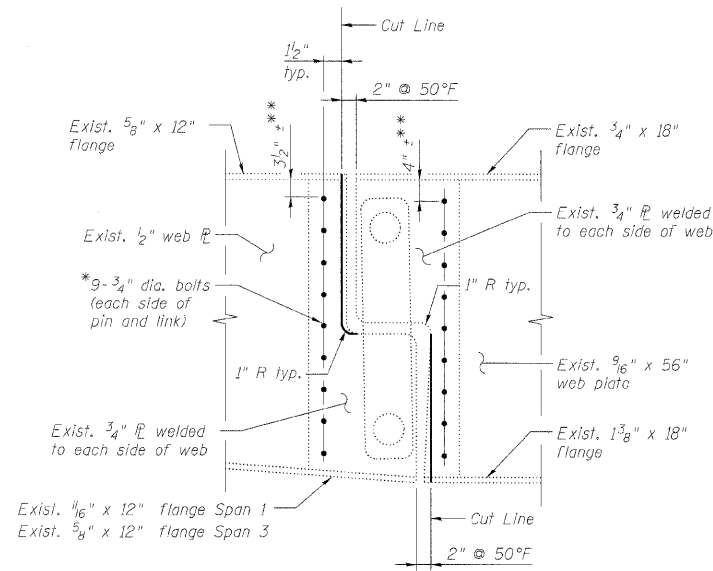
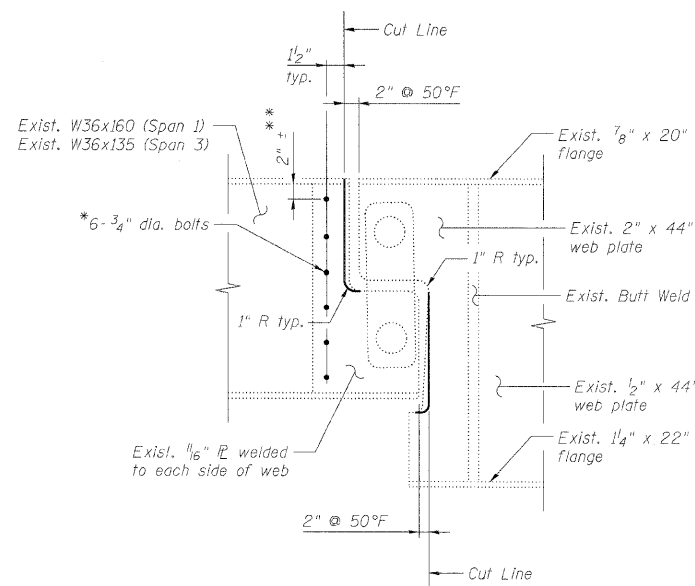


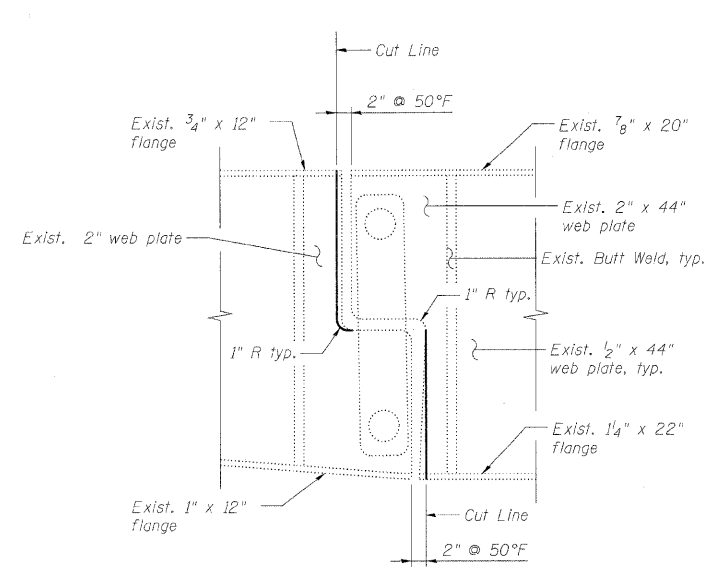
STATE OF ILLINOIS
DEPARTMENT OF TRANSPORTATION



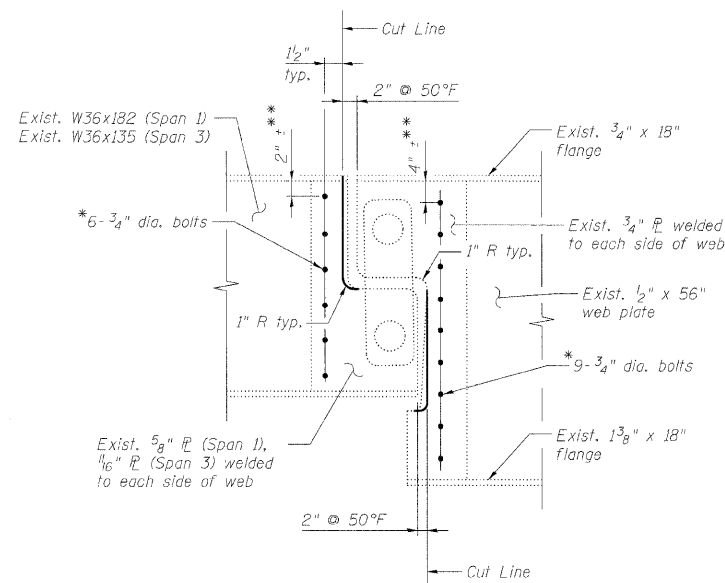
GIRDER MODIFICATION DETAILS - GIRDERS 9 & 15
(18 bolts per connection - 72 thus)



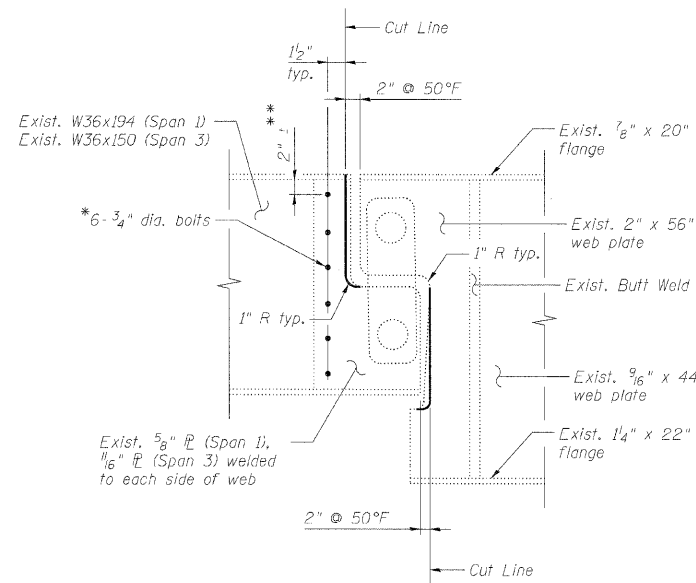
GIRDER MODIFICATION DETAILS - GIRDERS 2-8
(6 bolts per connection - 84 thus)



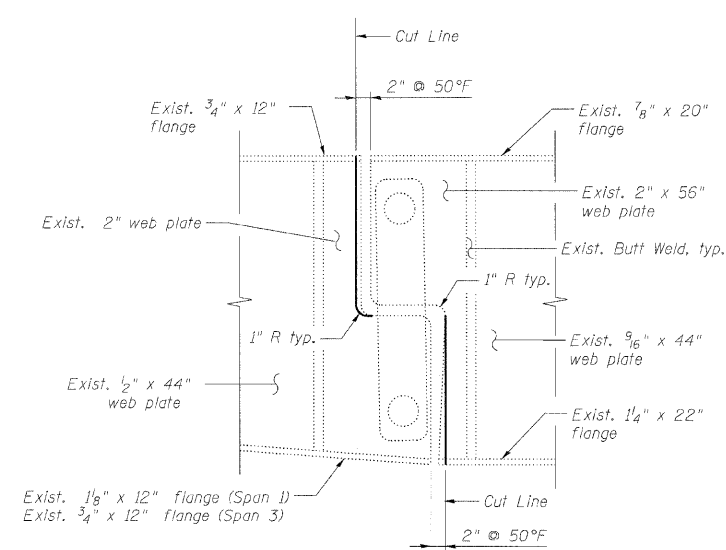
GIRDER MODIFICATION DETAILS - GIRDER 1



GIRDER MODIFICATION DETAILS - GIRDERS 10-14
(15 bolts per connection - 150 thus)



GIRDER MODIFICATION DETAILS - GIRDER 16
(6 bolts per connection - 12 thus)



GIRDER MODIFICATION DETAILS - GIRDER 17

Notes:

1. Cut surfaces shall be grinded smooth, spot cleaned, and painted with an aluminum epoxy mastic primer followed by a finish coat to match the color of the existing beam. Paint shall be applied per the requirements of Paint System 2, according to the Special Provision "Cleaning and Painting Existing Steel Structures". Cost included with Modify Existing Pin and Link Connection.
2. See existing plans for girder layout and numbering.
3. The Contractor must exercise extreme care so as not to damage the pins or link plate while trimming the girders.
4. Some connections may have already been cut therefore the current existing geometries may not match the geometries as shown on the existing plans.
5. Pin and Link connections are located near each pier. Thus, there are 2 connections per girder line.

* Install 3/4" diameter high strength bolts with two hardened washers that conform with ASTM (A-325) and AASHTO-164 with 1 1/8" diameter holes at 6" (+) centers to hold plates together. Gaps between the plates and web shall be sealed such that no moisture can develop between the plates. Cost included with Modify Existing Pin and Link Connection.

** Verify in field. Distance from flange to first bolt shall be equal at top and bottom of girder.

DESIGNED -	KWS
CHECKED -	MFB/EFS
DRAWN -	RMG
CHECKED -	KWS

BILL OF MATERIAL

ITEM	UNIT	TOTAL
Modify Existing Pin and Link Connection	L. Sum	0.33

benesch

alfred benesch & company
Engineers • Surveyors • Planners
205 North Michigan Avenue, Suite 2400
Chicago, Illinois 60601
312-565-0450 Job No. 10050

**STEEL REPAIR DETAILS
STRUCTURE NO. 022-0138**

SHEET NO. 15 38 SHEETS	F.A.I. RTE. 290	SECTION 22(1, 1-1, 2&3)RS-7	COUNTY DUPAGE	TOTAL SHEETS 546	SHEET NO. 390
	CONTRACT NO. 60G51			FED. ROAD DIST. NO. ILLINOIS FED. AID PROJECT	

x:\10000s\engineering\documents\contract\1\SNL022-0138-0137_Rohling-Ra\0138-60G51-015-SteelRepairDetails.dgn

18:10:26

11/2/2009