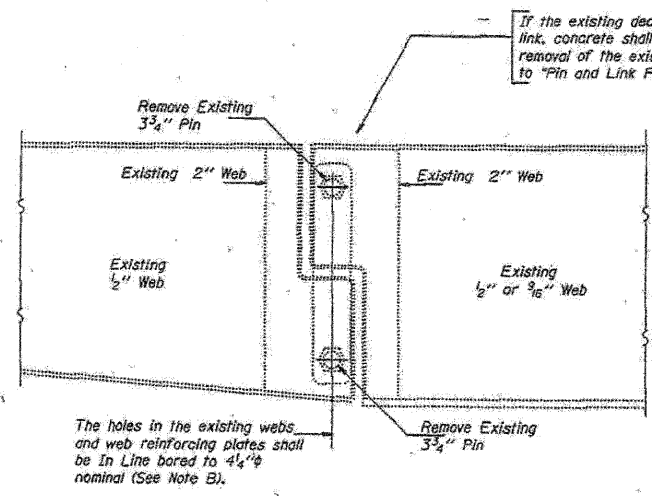
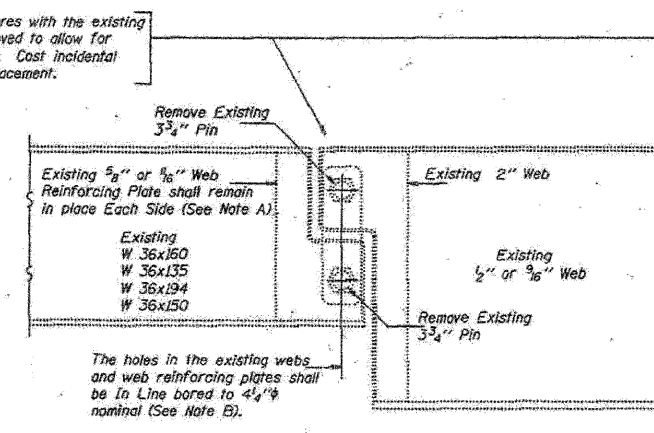


STATE OF ILLINOIS  
DEPARTMENT OF TRANSPORTATION

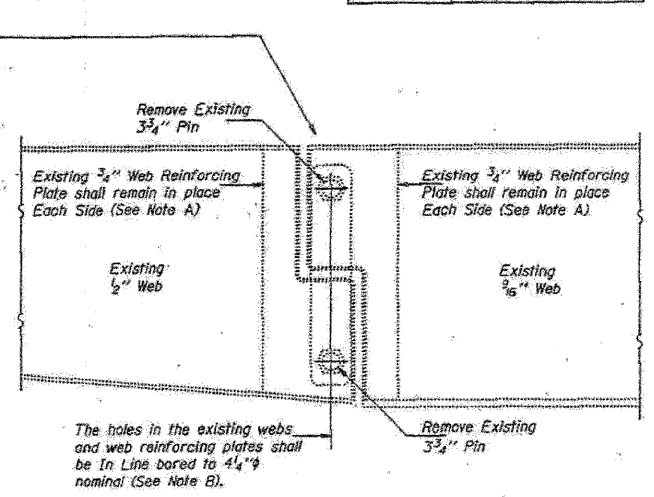
PROJECT NO.	SECTION	COUNTY	TOTAL SHEETS	SHEET NO.
F.A.P. RT. 431	SEC. 22-5HB-1 & 22-1HB-9	DUPAGE	67	18
FED. ROAD DIST. NO.		ILLINOIS	FED. AID PROJECT	



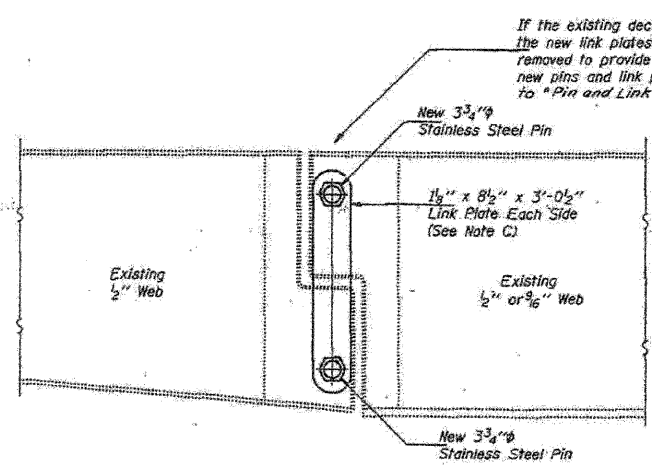
ELEVATION AT EXISTING PIN ASSEMBLY  
FOR BMS. 1, 17, 18, & 30



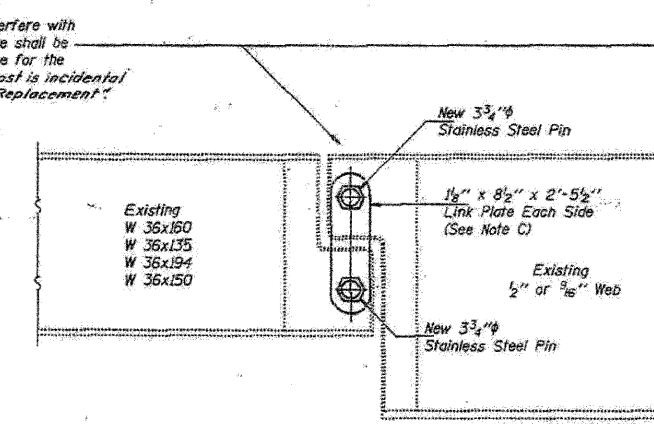
ELEVATION AT EXISTING PIN ASSEMBLY  
FOR BMS. 2, 3, 4, 5, 6, 7, 8, 16, 19, 28 & 29



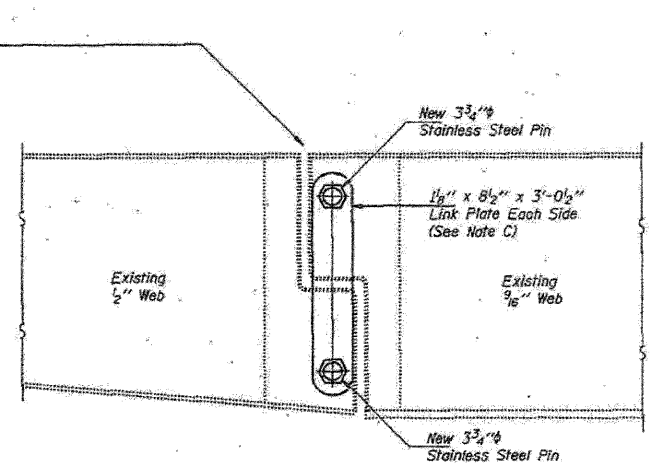
ELEVATION AT EXISTING PIN ASSEMBLY  
FOR BMS. 9, 15, 20, & 27



ELEVATION AT NEW PIN ASSEMBLY  
FOR BMS. 1, 17, 18, & 30



ELEVATION AT NEW PIN ASSEMBLY  
FOR BMS. 2, 3, 4, 5, 6, 7, 8, 16, 19, 28 & 29



ELEVATION AT NEW PIN ASSEMBLY  
FOR BMS. 9, 15, 20, & 27

DESIGNED	DECEMBER 13, 1995
CHECKED	EXAMINED
DRAWN	PASSED
CHECKED	ORDERER OF BRIDGES AND STRUCTURES

For Notes A, B and C see sheet #2 of 9.  
**PIN AND LINK PLATE REPLACEMENT**  
F.A.P. RT. 431 SEC. 22-5HB-1 & 22-1HB-9  
DUPAGE COUNTY  
STA. 1250+83.16  
STR. No. 022-0137 & 022-0138

FOR INFORMATION ONLY

**benesch**  
alfred benesch & company  
Engineers • Surveyors • Planners  
205 North Michigan Avenue, Suite 2400  
Chicago, Illinois 06001  
312-665-0460 Job No. 10050

SHEET NO. 22	F.A.I. RTE. 290	SECTION 22(1, 1-1, 2&3)RS-7	COUNTY DUPAGE	TOTAL SHEETS 546	SHEET NO. 397
38 SHEETS			CONTRACT NO. 60G51		
FED. ROAD DIST. NO.		ILLINOIS	FED. AID PROJECT		

EXISTING PLAN INFORMATION 5 OF 21  
STRUCTURE NO. 022-0138

18:10:58  
 x:\10000s\10050\engineering-documents-contract\1\NSN-022-0138-0137-Rohling.Rdw\0138-60G51-022-ExistingPlan-05.dgn  
 11/12/2009