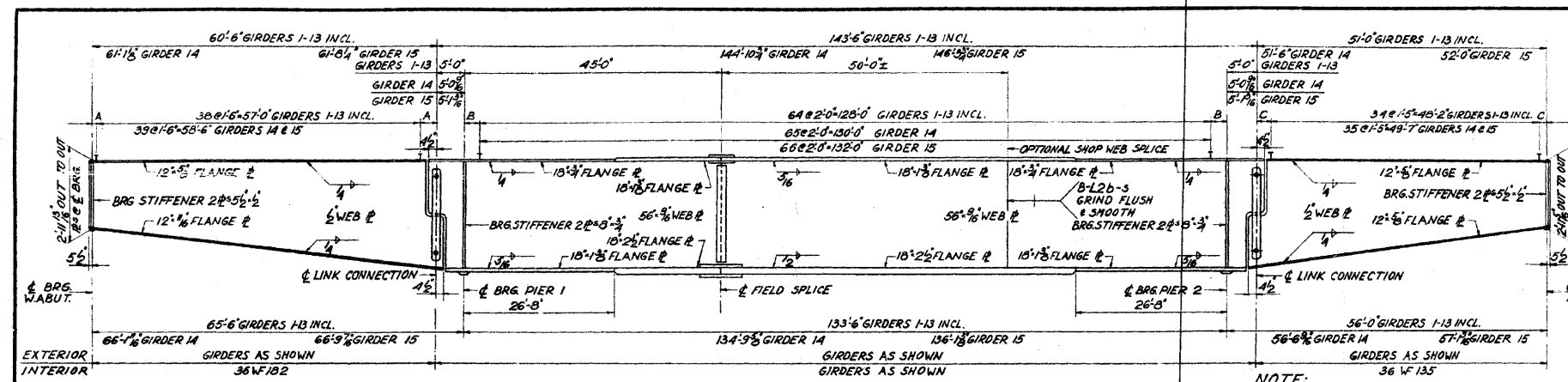


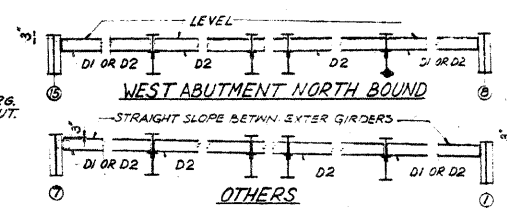
STATE OF ILLINOIS  
DEPARTMENT OF TRANSPORTATION

ROUTE NO.	SECTION	COUNTY	TOTAL SHEETS	SHEET NO.
F.A.R. 61	22-5HB-1	DU PAGE	181	100
STA.	TO STA.			
B.P.R. REG. NO. 4	ILLINOIS	PROJECT		

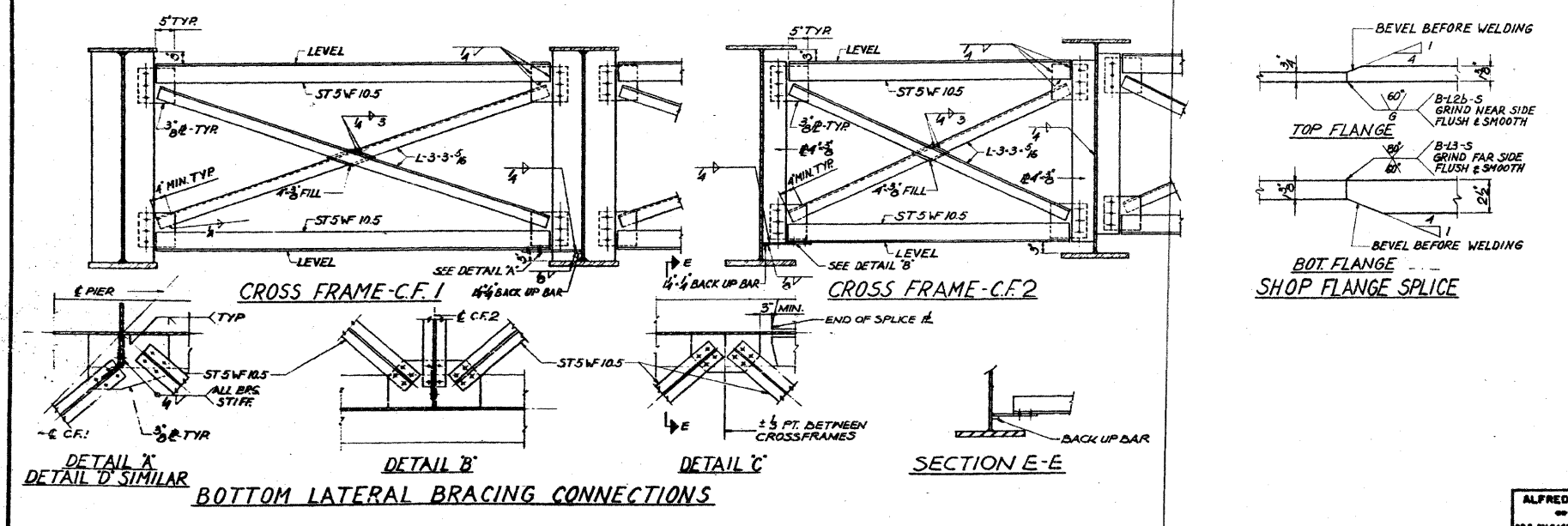
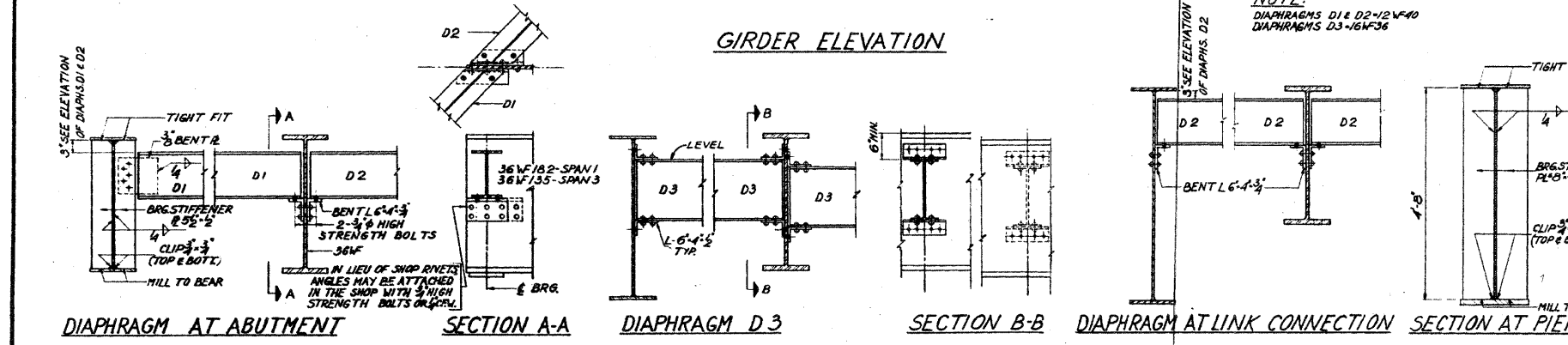
SHEET 13 OF 25



GIRDER	A	B	C
1-13	1'-9"	2'-9"	1'-5"
14	1'-3 1/2"	2'-4 1/2"	1'-1 1/2"
15	1'-7 1/2"	2'-0 1/2"	1'-2 1/2"



GIRDER ELEVATION



STEEL DETAILS  
F.A. ROUTE 61 OVER  
ILLINOIS ROUTE 53 (ROHLWING ROAD)  
PROJECT  
SECTIONS 22-5HB-1 & 22-1HB-9  
DU PAGE COUNTY  
STATION 1250+83.16

ALFRED BENESCH & COMPANY  
ENGINEERS, SURVEYORS & PLANNERS  
10 S. WABASH AVE. CHICAGO, ILLINOIS

FOR INFORMATION ONLY

benesch  
ENGINEERS • SURVEYORS • PLANNERS  
205 North Michigan Avenue, Suite 2400  
Chicago, Illinois 60601  
312-565-0450 Job No. 10050

SHEET NO. 28	F.A.I. RTE. 290	SECTION 22(1, 1-1, 2&3)RS-7	COUNTY DUPAGE	TOTAL SHEETS 546	SHEET NO. 403
38 SHEETS		CONTRACT NO. 60G51		FED. ROAD DIST. NO. ILLINOIS FED. AID PROJECT	

EXISTING PLAN INFORMATION 11 OF 21  
STRUCTURE NO. 022-0138

11/12/2009 10:05:00 \engineering\documents\contract\1\SN.022-0138-0137\_Rohlwing-Rd\0138-60G51-028-Existplan-11.dgn 1811:37