

STATE OF ILLINOIS
DEPARTMENT OF TRANSPORTATION

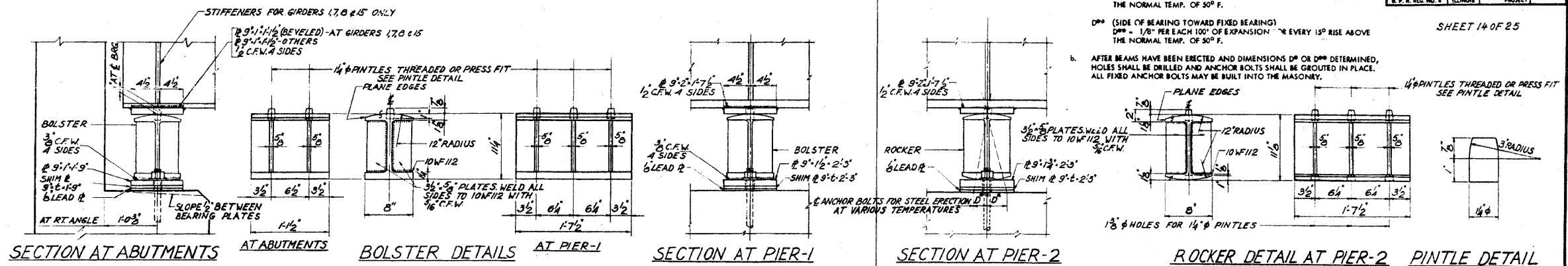
ROUTE NO.	SECTION	COUNTY	TOTAL SHEETS	SHEET NO.
F.A.P. 61	22-5HB-1	DUPAGE	181	101
STA.	TO STA.			
R.P.R. NO. 0	ILLINOIS	PROJECT		

SHEET 14 OF 25

NOTES ON SETTING OF ANCHOR BOLTS AT EXPANSION BEARINGS

- D^o (SIDE OF BEARING AWAY FROM FIXED BEARING)
D^o = 1/8" PER EACH 100' OF EXPANSION FOR EVERY 15° FALL BELOW THE NORMAL TEMP. OF 50° F.
- D^o (SIDE OF BEARING TOWARD FIXED BEARING)
D^o = 1/8" PER EACH 100' OF EXPANSION FOR EVERY 15° RISE ABOVE THE NORMAL TEMP. OF 50° F.

AFTER BEAMS HAVE BEEN ERECTED AND DIMENSIONS D^o OR D^o DETERMINED, HOLES SHALL BE DRILLED AND ANCHOR BOLTS SHALL BE GROUDED IN PLACE. ALL FIXED ANCHOR BOLTS MAY BE BUILT INTO THE MASONRY.



SECTION AT ABUTMENTS

AT ABUTMENTS

BOLSTER DETAILS

AT PIER-1

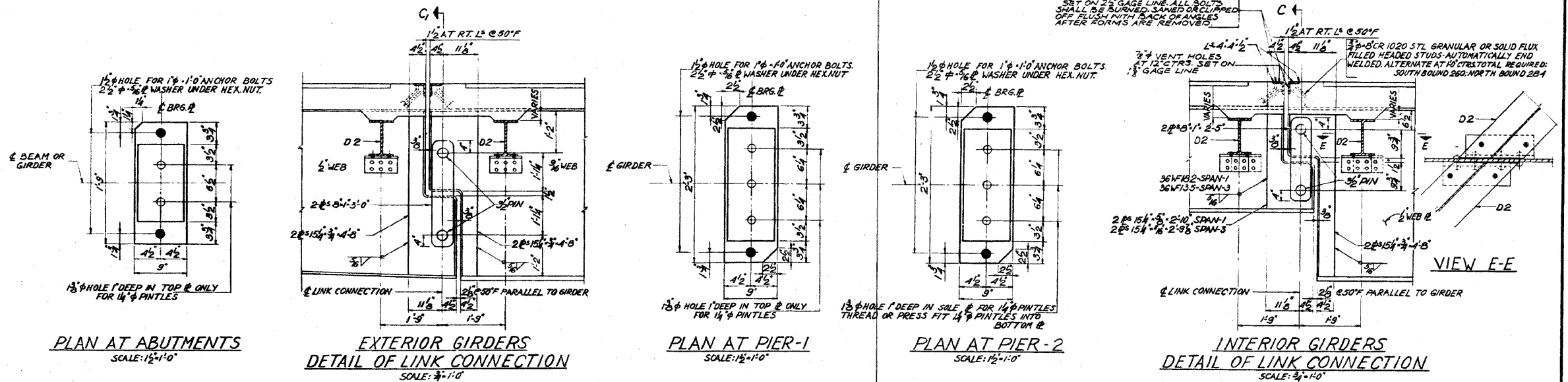
SECTION AT PIER-1

SECTION AT PIER-2

ROCKER DETAIL AT PIER-2

PINTLE DETAIL

NOTE: FOR "C" DIMENSIONS SEE FRAMING PLAN



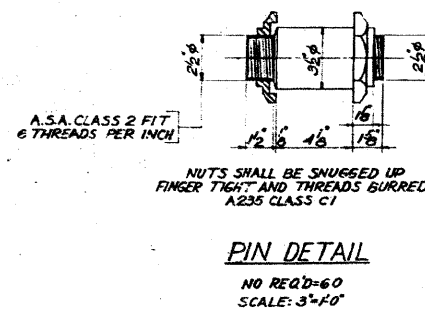
PLAN AT ABUTMENTS
SCALE: 1/2"=1'-0"

EXTERIOR GIRDERS
DETAIL OF LINK CONNECTION
SCALE: 3/4"=1'-0"

PLAN AT PIER-1
SCALE: 1/2"=1'-0"

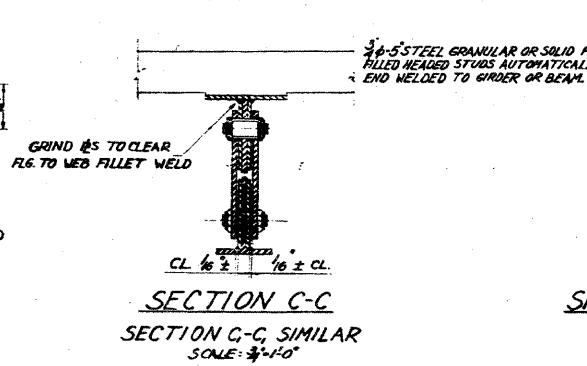
PLAN AT PIER-2
SCALE: 1/2"=1'-0"

INTERIOR GIRDERS
DETAIL OF LINK CONNECTION
SCALE: 3/4"=1'-0"

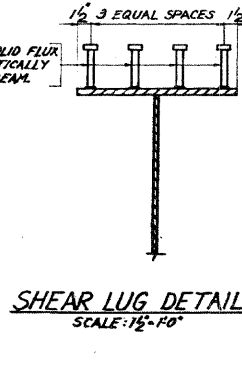


PIN DETAIL

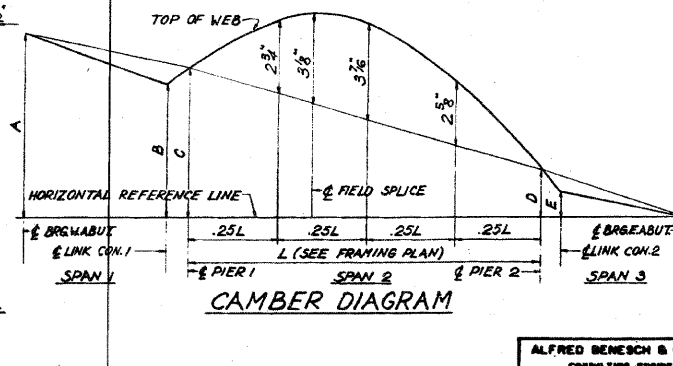
NO REQ'D-60
SCALE: 3/4"=1'-0"



SECTION C-C
SECTION C-C, SIMILAR
SCALE: 3/4"=1'-0"



SHEAR LUG DETAIL
SCALE: 1/2"=1'-0"



CAMBER DIAGRAM

TABLE OF CAMBER DIMENSION

GIRDER	A	B	C	D	E
H212INCL	5'-4 1/2"	4'-1 1/2"	4'-0 1/2"	1'-2 1/2"	1'-0 1/2"
13	5'-7 1/2"	4'-0"	3'-11 1/2"	1'-2 1/2"	1'-0 1/2"
14	4'-11 1/2"	3'-10 1/2"	3'-10"	1'-2 1/2"	1'-0 1/2"
15	4'-8 1/2"	3'-9 1/2"	3'-8 1/2"	1'-2 1/2"	1'-0 1/2"

STEEL DETAILS
F.A. ROUTE 61 OVER
ILLINOIS ROUTE 53 (ROHLWING ROAD)
PROJECT
SECTIONS 22-5HB-1E 22-1HB-9
DU PAGE COUNTY
STATION 1250+83.16

ALFRED BENESCH & COMPANY
ENGINEERS - SURVEYORS - PLANNERS
10 S. WABASH AVE. CHICAGO, ILLINOIS

FOR INFORMATION ONLY

benesch
Engineers - Surveyors - Planners
205 North Michigan Avenue, Suite 2400
Chicago, Illinois 60601
312-565-0460 Job No. 10050

SHEET NO. 29	F.A.I. R.T.E. 290	SECTION 22(1, 1-1, 2&3)RS-7	COUNTY DUPAGE	TOTAL SHEETS 546	SHEET NO. 404
38 SHEETS			CONTRACT NO. 60G51		
FED. ROAD DIST. NO.		ILLINOIS	FED. AID PROJECT		

EXISTING PLAN INFORMATION 12 OF 21
STRUCTURE NO. 022-0138

X:\100000s\100000s\engineering\documents\contract\1\SN.022-0138-0137-Rohlwing-Rd\0138-0051-029-Existplan-12.dgn 1811:48 11/12/2009