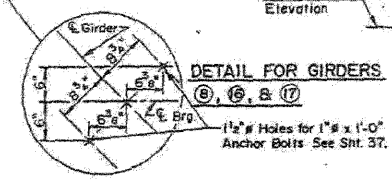
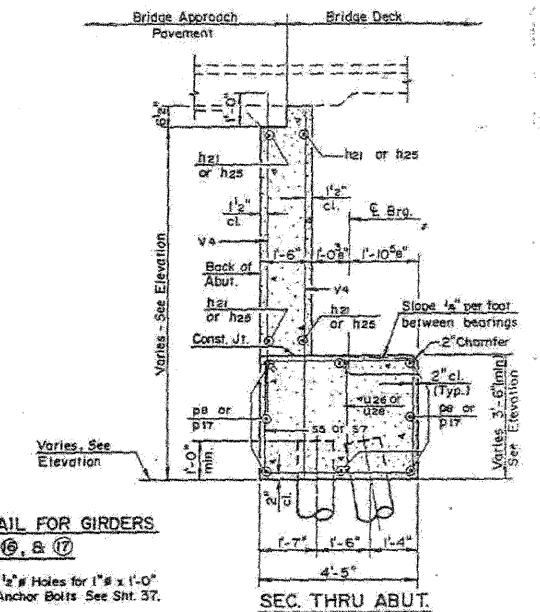
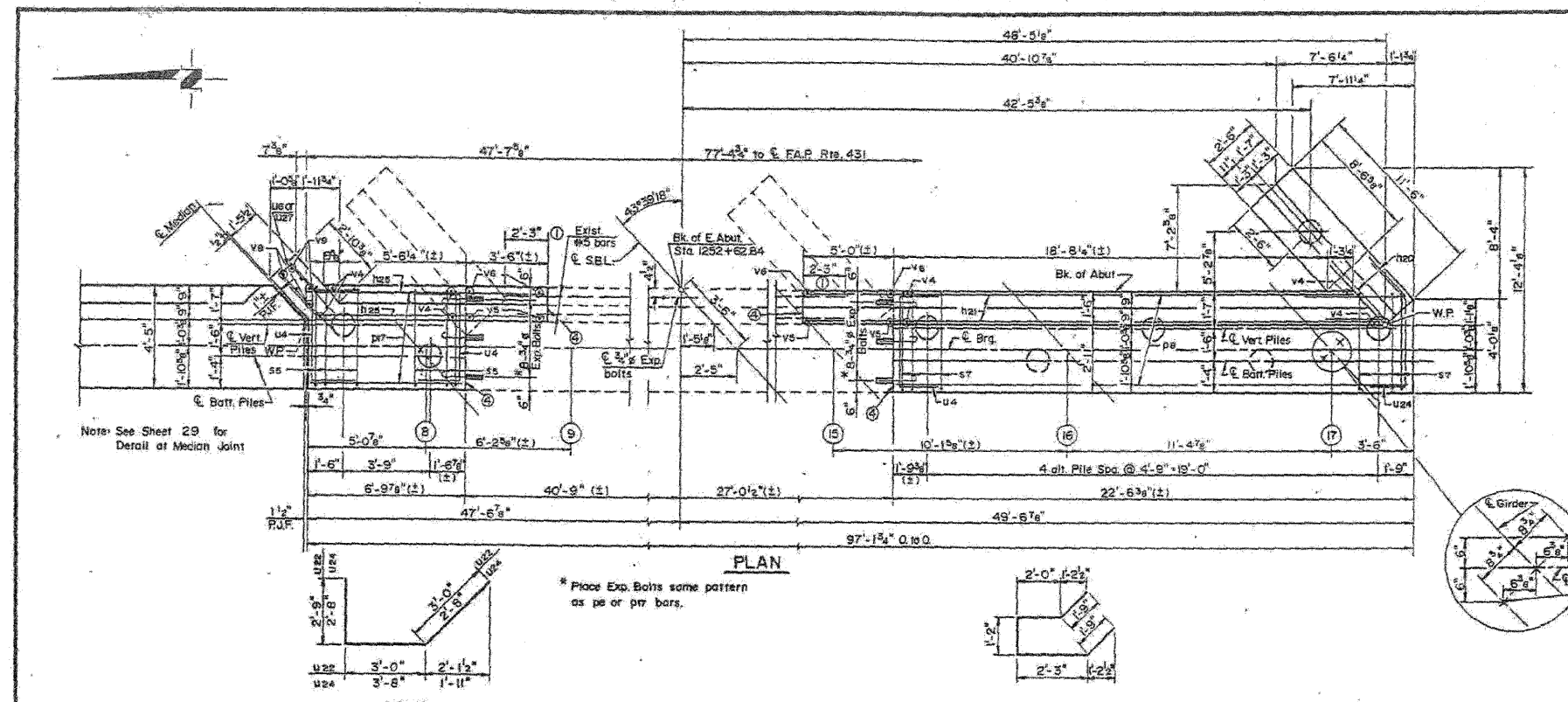


STATE OF ILLINOIS
DEPARTMENT OF TRANSPORTATION

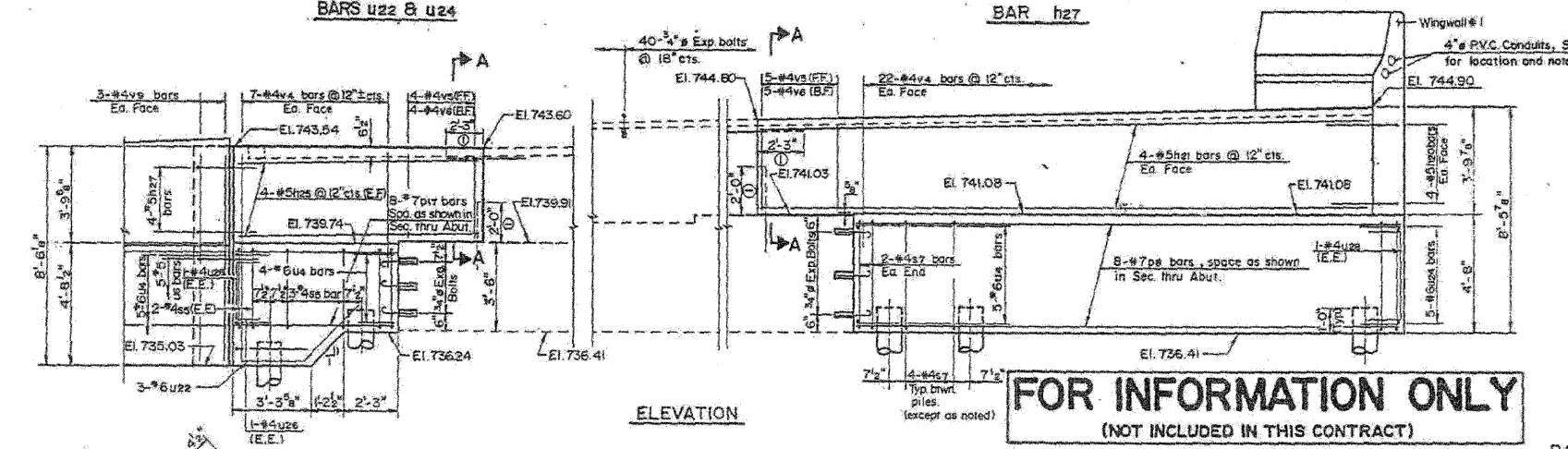
22-118-9	SECTION	COUNTY	TOTAL SHEETS	SHEET NO.
FAP431	(X)	DUPAGE	151	114
SHEET 26 OF 45				



BILL OF MATERIALS

Bar	No.	Size	Length	Shape
h20	8	#5	5'-6"	
h21	8	#5	26'-0"	
h22	8	#5	10'-0"	
h27	4	#5	8'-11"	
D8	8	#7	22'-3"	
D17	8	#7	6'-6"	
ss	7	#4	15'-3"	
s7	20	#4	17'-7"	
u4	14	#6	9'-0"	
u6	5	#5	10'-0"	
u22	3	#6	8'-9"	
u24	5	#6	9'-0"	
u26	2	#4	5'-9"	
u28	2	#4	6'-11"	
v4	58	#4	6'-3"	
v5	9	#4	3'-6"	
v6	9	#4	4'-0"	
v9	6	#4	8'-3"	

** Includes quantities for Wingwall #1.



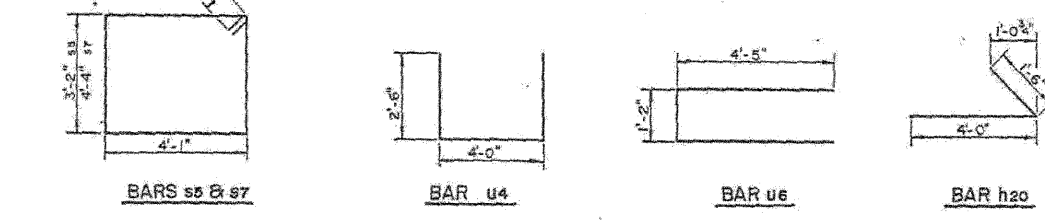
FOR INFORMATION ONLY
(NOT INCLUDED IN THIS CONTRACT)

PILE DATA

Type-----Concrete
Capacity-----30 Tons
Est. Length-----60 Ft.
No. Req'd-----8 including one test pile

NOTES

- 1) Cut off existing reinforcement as shown. Clean by sandblasting to gray metal and incorporate into new construction. Cost incidental to Class X Concrete.
- 2) For details of Concrete Removal see sheet 23.
- 3) For Wingwall details see sheet 31.
- 4) Bonded Construction Joint.



FOR INFORMATION ONLY

benesch

alfred benesch & company
Engineers - Surveyors - Planners
205 North Michigan Avenue, Suite 2400
Chicago, Illinois 60601
312-565-0460 Job No. 10050

SHEET NO. 32	F.A.I. RTE. 290	SECTION 22(1, 1-1, 2&3)RS-7	COUNTY DUPAGE	TOTAL SHEETS 546	SHEET NO. 407
38 SHEETS	CONTRACT NO. 60G51		FED. ROAD DIST. NO. ILLINOIS FED. AID PROJECT		

EXISTING PLAN INFORMATION 15 OF 21
STRUCTURE NO. 022-0138

EAST ABUTMENT
SOUTH BOUND LANES
F.A.P. RTE. 431 SEC. 22-118-9
DU PAGE CO.
STA. 1250 + 83.16
STR. NO. 022-0138

HSIONG ASSOCIATES LTD.
DESIGNED: C.L. CHECKED: W.H.
DRAWN: D.D.R. DATE: NO. H-042-2

1812:2009 I:\100000s\10050\engineering\documents\contract\1\SN.022.0138.0137_Rohrling_Rd\0136-0137-Existing\plan-15.dgn