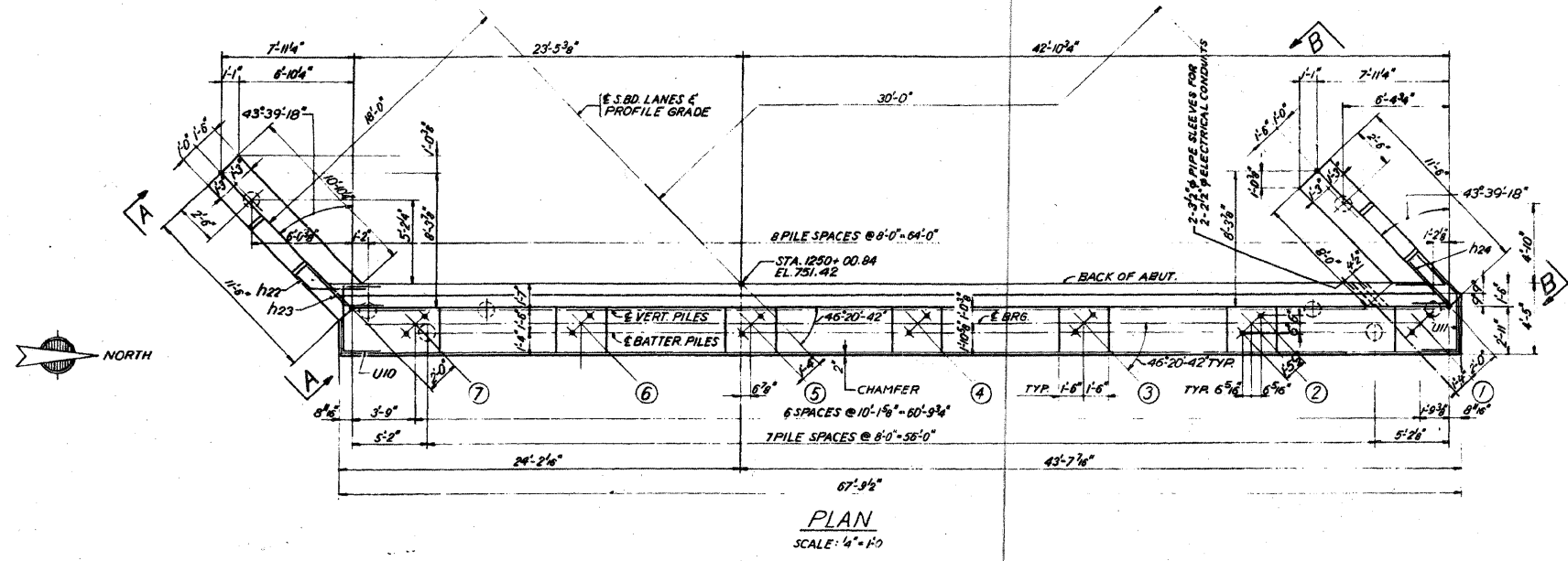


STATE OF ILLINOIS  
DEPARTMENT OF TRANSPORTATION

ROUTE NO.	SECTION	COUNTY	TOTAL SHEETS	SHEET NO.
F.A.I. RTE. 290	22(1, 1-1, 2&3)RS-7	DUPAGE	181	102
STA.	TO STA.	PROJECT		
1250+83.16				

SHEET 15 OF 25

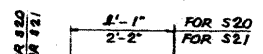
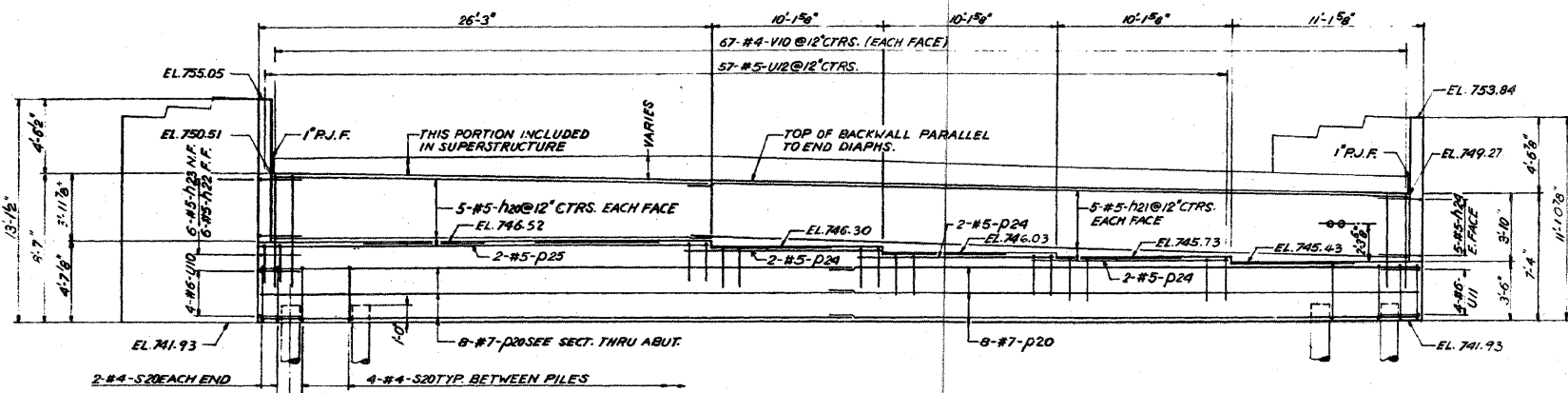


**BILL OF MATERIAL**

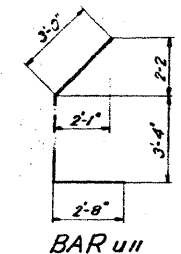
BAR	NO.	SIZE	LENGTH	SHAPE
h20	10	#5	26'-9"	U
h21	10	#5	42'-0"	U
h22	6	#5	4'-3"	U
h23	6	#5	5'-3"	U
h24	10	#5	6'-0"	U
h25	38	#4	11'-3"	U
h26	4	#4	7'-6"	U
h27	4	#4	3'-2"	U
U10	4	#6	9'-0"	U
U11	4	#6	9'-0"	U
U12	57	#5	6'-9"	U
V10	134	#4	6'-0"	U
V11	16	#4	7'-3"	U
V12	16	#4	7'-9"	U
V13	8	#4	8'-5"	U
V14	8	#4	8'-3"	U
S20	68	#4	16'-3"	U
S21	24	#4	9'-5"	U
CLASS X CONCRETE			CU. YDS.	71.2
REINF. BARS			LBS.	5100
CONCRETE PILES			LIN. FT.	1350

**PILE DATA**

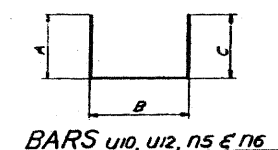
TYPE: V  
CAPACITY: 30 TONS  
EST. LENGTH: 75'  
\*NO. REQUIRED: 19  
\*INCLUDES 1 TEST PILE



BARS S20 & S21

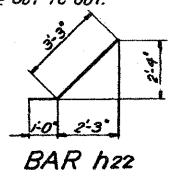


BAR U11

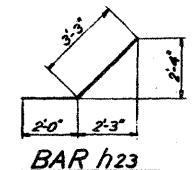


BARS U10, U12, V15 & V16

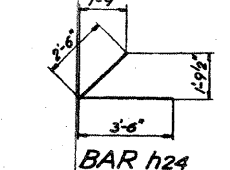
BAR	A	B	C
U10	2'-6"	4'-0"	2'-6"
U12	2'-1"	2'-7"	2'-1"
V15	5'-0"	9"	5'-0"
V16	3'-9"	9"	3'-9"



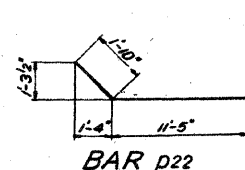
BAR h22



BAR h23



BAR h24



BAR p22

WEST ABUTMENT-SOUTH BOUND  
F.A.P.ROUTE 61 OVER  
ILLINOIS ROUTE 53(ROHLWING ROAD)  
PROJECT  
SECTIONS 22-5HB-1E 22-1HB-9  
DUPAGE COUNTY  
STATION 1250+83.16

ALFRED BENESCH & COMPANY  
CONSULTING ENGINEERS  
10 S. WABASH AVE. CHICAGO, ILLINOIS

FOR INFORMATION ONLY

benesch

alfred benesch & company  
Engineers • Surveyors • Planners  
205 North Michigan Avenue, Suite 2400  
Chicago, Illinois 60601  
312-565-0460 Job No. 10050

SHEET NO. 36	F.A.I. RTE. 290	SECTION 22(1, 1-1, 2&3)RS-7	COUNTY DUPAGE	TOTAL SHEETS 546	SHEET NO. 411
38 SHEETS	CONTRACT NO. 60G51		FED. ROAD DIST. NO. ILLINOIS FED. AID PROJECT		

EXISTING PLAN INFORMATION 19 OF 21  
STRUCTURE NO. 022-0138

I:\112\2009\10050\engineering\documents\contract\1\SN\_022\_0138\_0137\_Rohlwing-Rd\0136-60G51-036-Exisplan-19.dgn