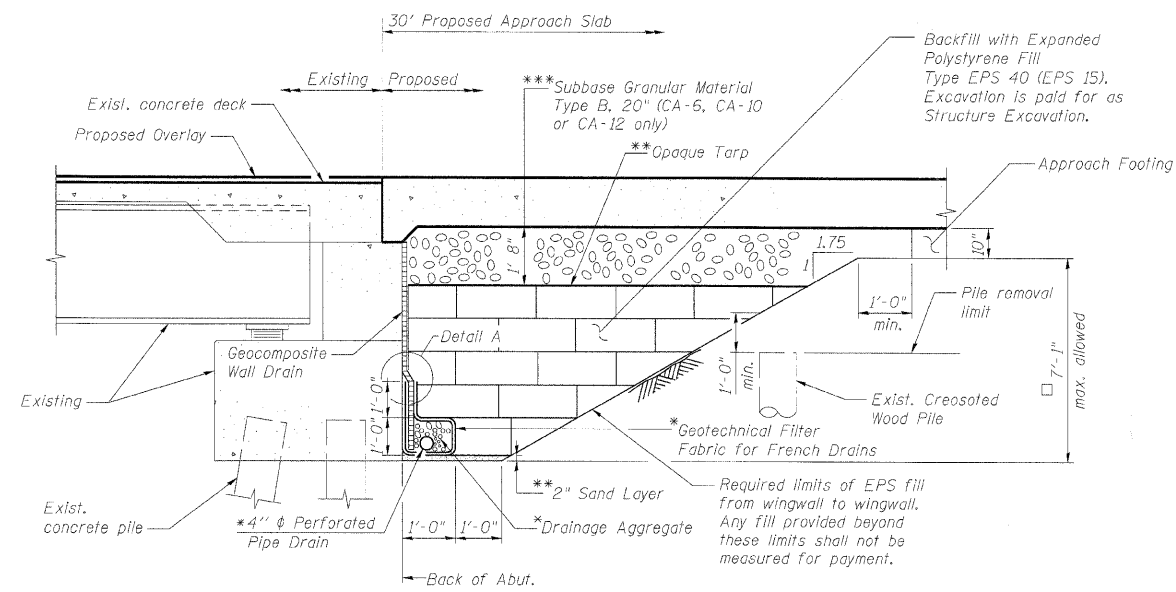


STATE OF ILLINOIS
DEPARTMENT OF TRANSPORTATION



ABUTMENT STABILIZATION DETAIL

(Horiz. dim. @ Rt. L's)

* Included in the cost of Pipe Underdrains for Structures.

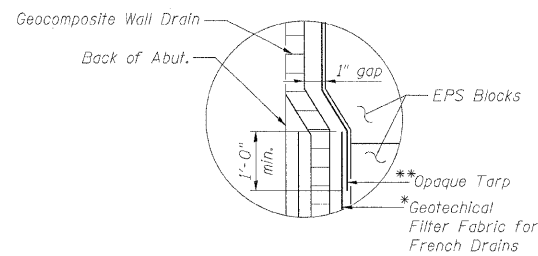
** Included in the cost of Expanded Polystyrene Fill.

*** Included in the cost of Concrete Superstructure. See Approach Slab Details.

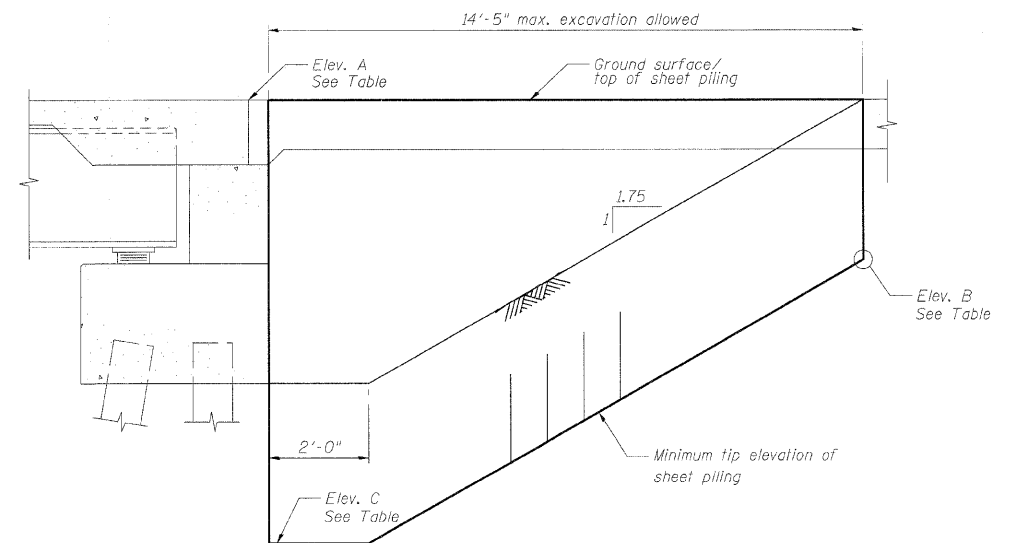
All drainage system components shall extend parallel to the abutment back wall until they intersect the wingwalls or 2'-0" from the end of the wingwalls when the wings are parallel to the abutment. The pipe shall extend under the wingwall, if necessary, until intersecting the side slopes. The pipes shall drain into concrete headwalls. (See Article 601.05 of the Standard Specifications and Highway Standard 60110).

Existing approach slabs are supported on creosoted wood piles. The piles shall be removed down a minimum of 1'-0" below the limits of structure excavation. Cost Included in Structure Excavation.

Max. allowed EPS fill depth to maintain 1'-0" min. berm from Proposed Approach Footing to EPS fill cut. If abutment exceeds this height, only install fill down to the max. allowed depth.



DETAIL A



TEMPORARY SHEET PILING

(Horiz. dim. @ Rt. L's)

SHEET PILING ELEVATION TABLE					
Abutment	Elev. A	Elev. B	Elev. C	Min. Section Modulus Req'd. (in. ² /ft.)	Min. Embedment (ft.)
North	748.28	742.08	734.99	3.3	6.3
South	753.57	747.37	740.28	3.3	6.3

BILL OF MATERIAL

Item	Unit	Total
Structure Excavation	Cu. Yd.	488
Temporary Sheet Piling	Sq. Ft.	296
Geocomposite Wall Drain	Sq. Yd.	189
Pipe Underdrains for Structures 4"	Foot	252
Expanded Polystyrene Fill	Cu. Yd.	303

DESIGNED -	MFB
CHECKED -	KWS
DRAWN -	RMG
CHECKED -	KWS

benesch

alfred benesch & company
Engineers • Surveyors • Planners
205 North Michigan Avenue, Suite 2400
Chicago, Illinois 60601
312-565-0460 Job No. 10050

SHEET NO. 14	F.A.I. RTE.	SECTION	COUNTY	TOTAL SHEETS	SHEET NO.
	290				
32 SHEETS	CONTRACT NO. 60G51				
FED. ROAD DIST. NO.		ILLINOIS		FED. AID PROJECT	

ABUTMENT STABILIZATION DETAILS
STRUCTURE NO. 022-0137