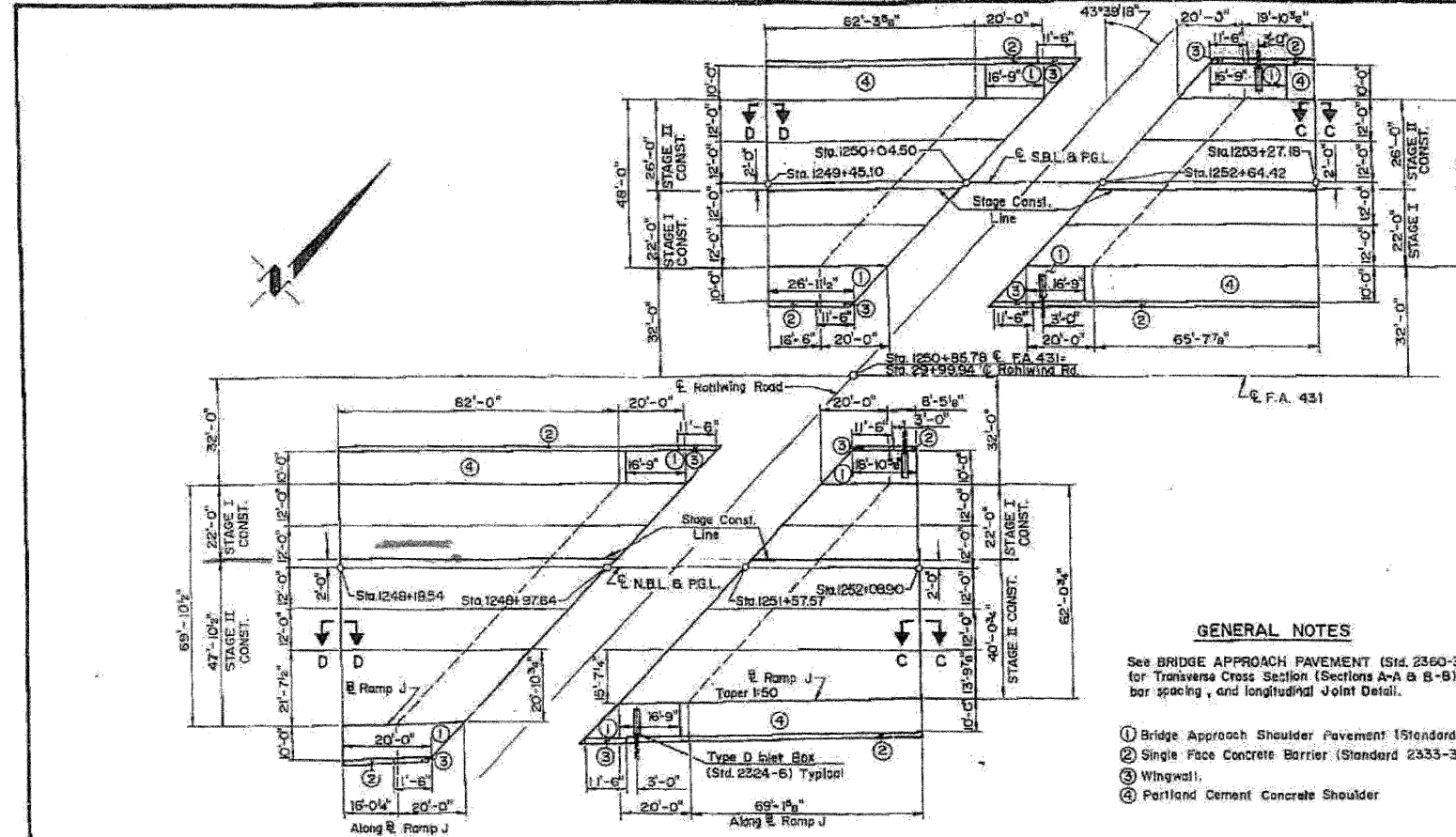


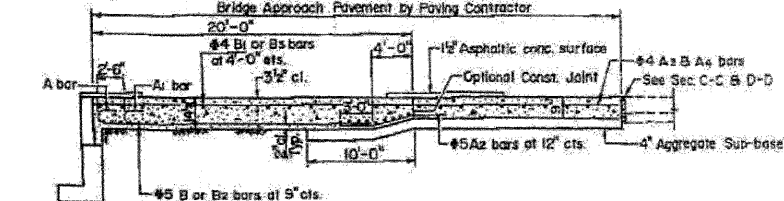
STATE OF ILLINOIS  
DEPARTMENT OF TRANSPORTATION

ROUTE NO.	SECTION	COUNTY	TOTAL SHEETS	SHEET NO.
221	1-1, 2&3	DUPAGE	601	209

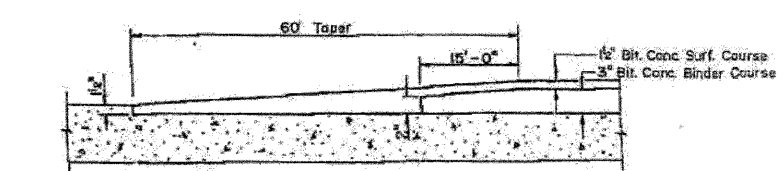
\* 22(1,5,5-1)R&S; 22(1 & 5-1)K;  
22(1R&S-5,8 & 5R&S-1)R&S



Note: Tilt hook of #9 bars for min. 3 1/2' cl. Use 1'-4" min. lap for #4 bars. Use 1'-8" min. lap for #5 bars.



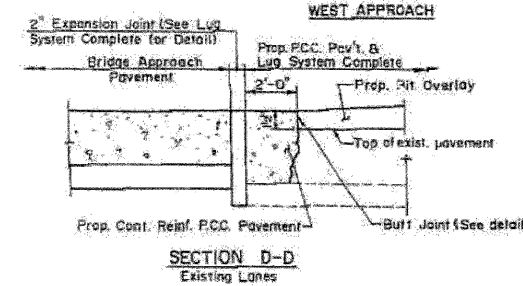
LONGITUDINAL CROSS SECTION



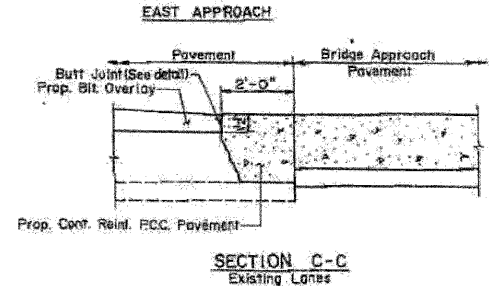
DETAIL: BUTT JOINT & TAPER ON P.C.C. PAV'T.

GENERAL NOTES

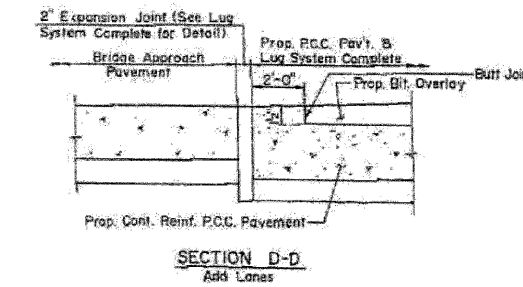
- 1) Bridge Approach Shoulder Pavement (Standard 2324-6)
  - 2) Single Face Concrete Barrier (Standard 2333-3)
  - 3) Wingwall
  - 4) Portland Cement Concrete Shoulder
- See BRIDGE APPROACH PAVEMENT (Std. 2350-3) for Transverse Cross Section (Sections A-A & B-B), bar spacing, and longitudinal Joint Detail.



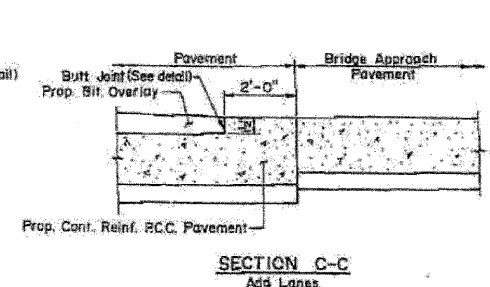
SECTION D-D Existing Lanes



SECTION C-C Existing Lanes



SECTION D-D Add Lanes



SECTION C-C Add Lanes

WEST APPROACH - S.B.L. BILL OF MATERIAL

BAR	NO.	SIZE	LENGTH	SHAPE
A	56	#9	17'-0"	—
A1	43	#9	10'-3"	—
A2	56	#5	10'-0"	—
A3	168	#4	19'-1"	—
A4	84	#4	22'-3"	—
B	27	#5	32'-6"	—
B1	62	#4	11'-6"	—
B2	27	#5	35'-3"	—
Reinforcement Bars		Lbs.	11,100	
Bridge Approach Pav't. Special		Sq. Yd.	316.8	
P.C. Conc. Bridge Appr. Shldr. Pav't.		Sq. Yd.	68.3	

EAST APPROACH - S.B.L. BILL OF MATERIAL

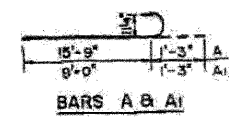
BAR	NO.	SIZE	LENGTH	SHAPE
A	56	#9	17'-0"	—
A1	43	#9	10'-3"	—
A2	56	#5	10'-0"	—
A3	168	#4	20'-9"	—
A4	84	#4	23'-9"	—
B	27	#5	32'-6"	—
B1	66	#4	11'-6"	—
B2	27	#5	35'-3"	—
Reinforcement Bars		Lbs.	11,400	
Bridge Approach Pav't. Special		Sq. Yd.	334.7	
P.C. Conc. Bridge Appr. Shldr. Pav't.		Sq. Yd.	66.2	

WEST APPROACH - N.B.L. BILL OF MATERIAL

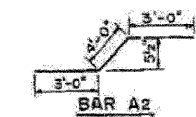
BAR	NO.	SIZE	LENGTH	SHAPE
A	77	#9	17'-0"	—
A1	64	#9	10'-3"	—
A2	77	#5	10'-0"	—
A3	242	#4	18'-10"	—
A4	120	#4	23'-1"	—
B	27	#5	32'-6"	—
B1	83	#4	11'-6"	—
B2	54	#5	33'-6"	—
B3	13	#4	20'-6"	—
Reinforcement Bars		Lbs.	16,930	
Bridge Approach Pav't. Special		Sq. Yd.	531.1	
P.C. Conc. Bridge Appr. Shldr. Pav't.		Sq. Yd.	64.2	

EAST APPROACH - N.B.L. BILL OF MATERIAL

BAR	NO.	SIZE	LENGTH	SHAPE
A	71	#9	17'-0"	—
A1	56	#9	10'-3"	—
A2	71	#5	10'-0"	—
A3	111	#4	26'-3"	—
A4	112	#4	31'-3"	—
B	27	#5	32'-6"	—
B1	78	#4	11'-6"	—
B2	5	#5	29'-3"	—
B3	21	#4	13'-6"	—
Reinforcement Bars		Lbs.	14,650	
Bridge Approach Pav't. Special		Sq. Yd.	409.6	
P.C. Conc. Bridge Appr. Shldr. Pav't.		Sq. Yd.	59.4	



BARS A & A1



BAR A2

F.A. 431 (ILLINOIS ROUTE 15) OVER ROHLWING ROAD  
BRIDGE APPROACH PAVEMENT

EXISTING PLAN INFORMATION 2 OF 17  
STRUCTURE NO. 022-0137

FOR INFORMATION ONLY

**benesch**  
alfred benesch & company  
Engineers • Surveyors • Planners  
205 North Michigan Avenue, Suite 2400  
Chicago, Illinois 60601  
312-565-0450 Job No. 10050

SHEET NO. 17 32 SHEETS	F.A.I. RTE. 290 355	SECTION 22(1, 1-1, 2&3)RS-7	COUNTY DUPAGE	TOTAL SHEETS 546	SHEET NO. 430
	CONTRACT NO. 60G51			FED. ROAD DIST. NO. ILLINOIS FED. AID PROJECT	

11/12/2009 11:13:59 x:\10000s\10050\engineer\ing\_documents\contract\1\SN.022-0137-0137-Rohlwng.Rd\0137-60G51-017-Existplan.02.dgn