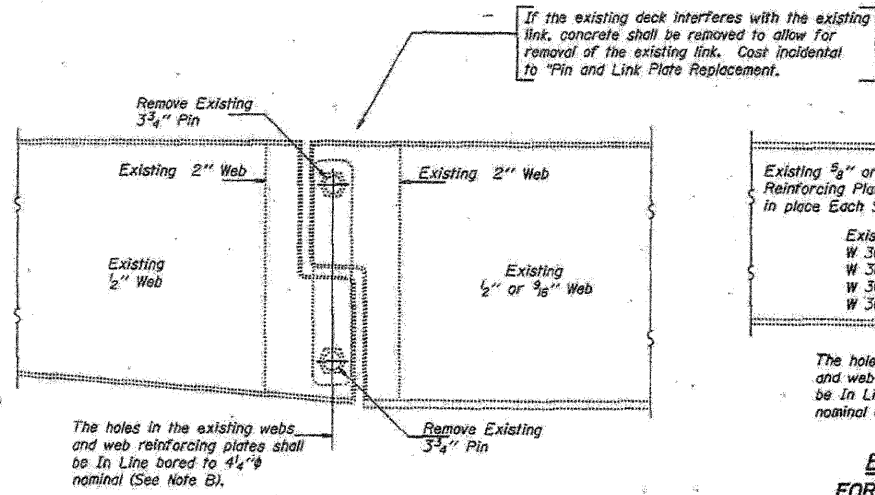


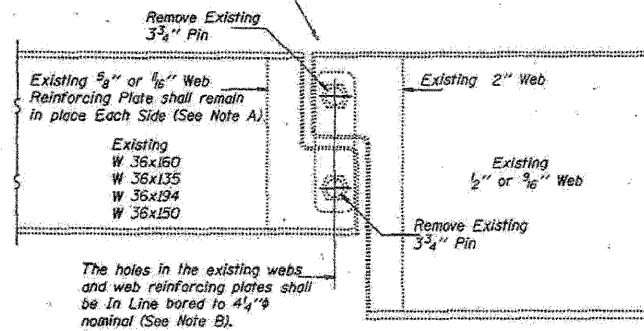
STATE OF ILLINOIS
DEPARTMENT OF TRANSPORTATION

STATE OF ILLINOIS
DEPARTMENT OF TRANSPORTATION

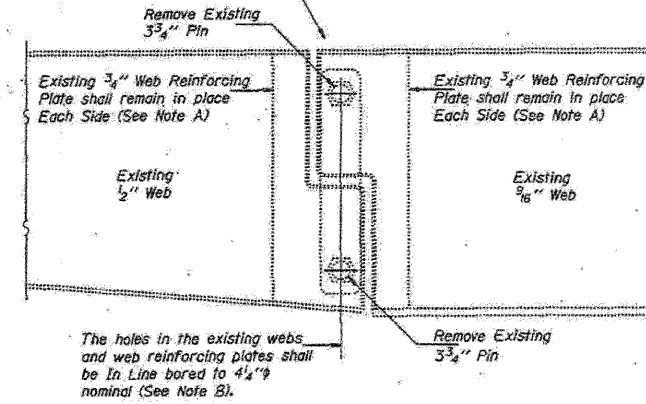
ROUTE NO.	SECTION	COUNTY	SHEET NO.	TOTAL SHEETS
F.A.P. RT. 431	SEC. 22-5HB-1 & 22-1HB-9	DUPAGE	67	118
FED. ROAD DIST. NO.		ILLINOIS	FED. AID PROJECT	



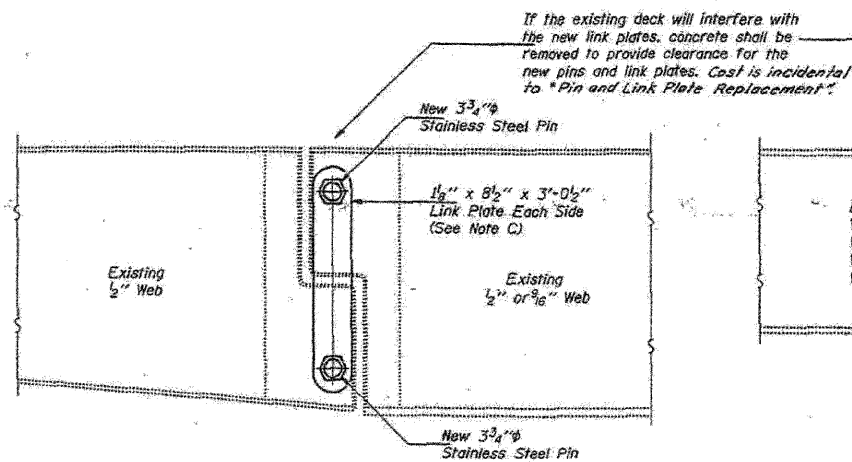
ELEVATION AT EXISTING PIN ASSEMBLY
FOR BMS. 1, 17, 18, & 30



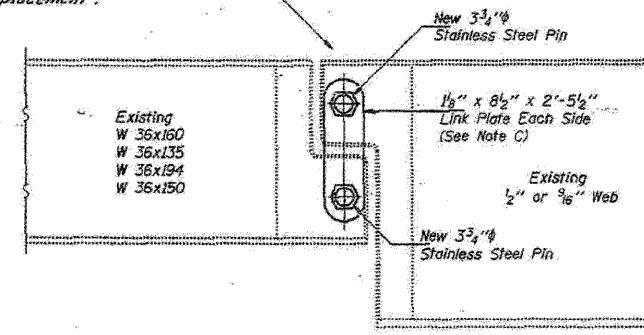
ELEVATION AT EXISTING PIN ASSEMBLY
FOR BMS. 2, 3, 4, 5, 6, 7, 8, 16, 19, 28 & 29



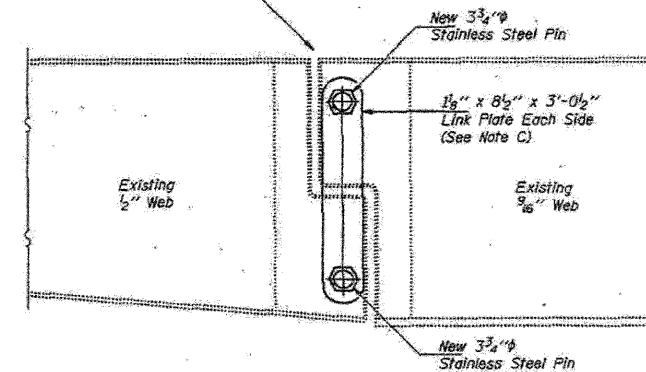
ELEVATION AT EXISTING PIN ASSEMBLY
FOR BMS. 9, 15, 20, & 27



ELEVATION AT NEW PIN ASSEMBLY
FOR BMS. 1, 17, 18, & 30



ELEVATION AT NEW PIN ASSEMBLY
FOR BMS. 2, 3, 4, 5, 6, 7, 8, 16, 19, 28 & 29



ELEVATION AT NEW PIN ASSEMBLY
FOR BMS. 9, 15, 20, & 27

DESIGNED <i>Anthony J. P...</i>	DECEMBER 13, 1995
CHECKED <i>Robert J. Mc...</i>	EXAMINED
DRAWN <i>r.d. carbonell</i>	PASSED
CHECKED <i>AKU, CHM</i>	

For Notes A, B and C see sheet #2 of 9.
PIN AND LINK PLATE REPLACEMENT
F.A.P. RT. 431 SEC. 22-5HB-1 & 22-1HB-9
DUPAGE COUNTY
STA. 1250+83.16
STR. No. 022-0137 & 022-0138

EXISTING PLAN INFORMATION 4 OF 17
STRUCTURE NO. 022-0137

FOR INFORMATION ONLY

benesch

alfred benesch & company
Engineers • Surveyors • Planners
205 North Michigan Avenue, Suite 2400
Chicago, Illinois 60601
312-565-0460 Job No. 10050

SHEET NO. 19	F.A.I. RTE.	SECTION	COUNTY	TOTAL SHEETS	SHEET NO.
	290	221, 1-1, 2&3)RS-7	DUPAGE	546	432
32 SHEETS	CONTRACT NO. 60G51				
FED. ROAD DIST. NO.		ILLINOIS		FED. AID PROJECT	

x:\10000s\10050\engineering\documents_contract\1\SN.022.0138.0137_Rohling-Rd\0137-60G51-019-Existplan_04.dgn 18:44:07 11/12/2009