

STATE OF ILLINOIS
DEPARTMENT OF TRANSPORTATION

ROUTE NO.	SECTION	COUNTY	TOTAL SHEETS	SHEET NO.
22-5HB-1 & 22-1HB-9	DU PAGE	DUPAGE	131	117
SHEET 31 OF 45				

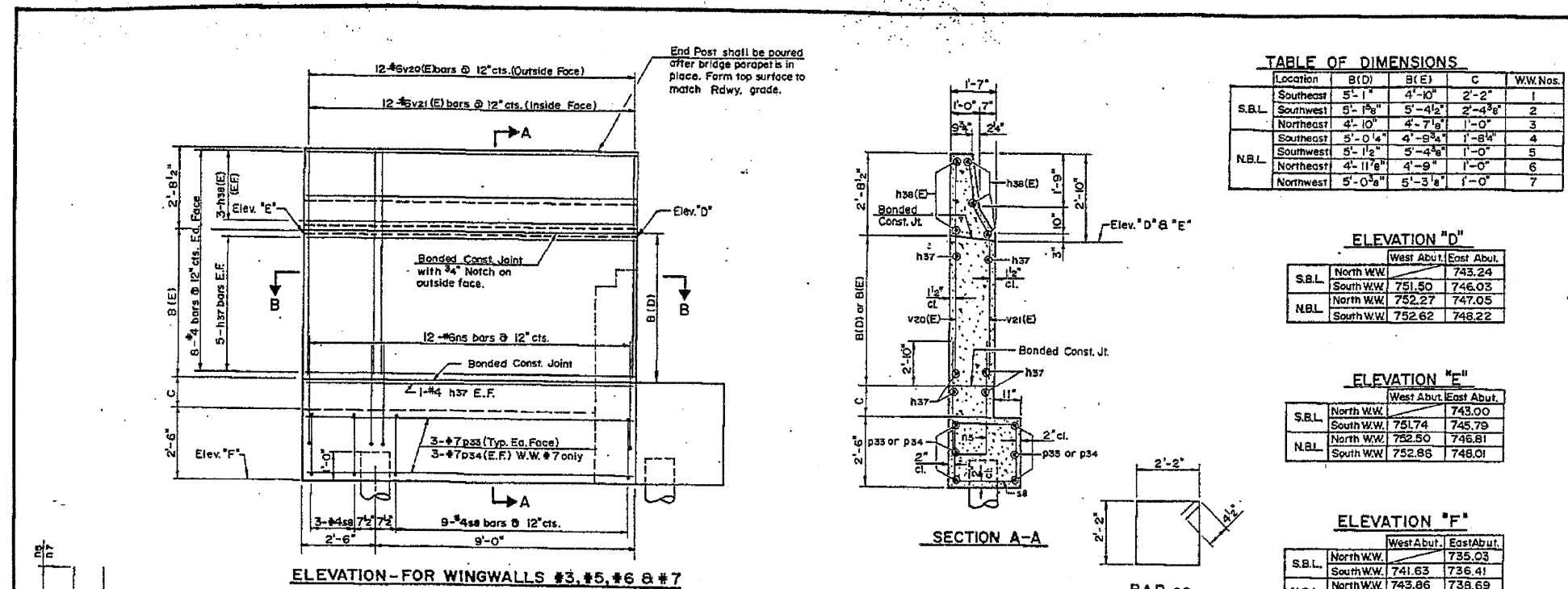


TABLE OF DIMENSIONS

Location	B(D)	B(E)	C	W.W.Nos.
S.B.L. Southeast	5'-1"	4'-10"	2'-2"	1
S.B.L. Southwest	5'-1 1/2"	5'-4 1/2"	2'-4 1/2"	2
S.B.L. Northeast	4'-10"	4'-7 1/2"	1'-0"	3
N.B.L. Southeast	5'-0 1/4"	4'-9 1/4"	1'-8 1/4"	4
N.B.L. Southwest	5'-1 1/2"	5'-4 1/2"	1'-0"	5
N.B.L. Northeast	4'-11 1/8"	4'-9"	1'-0"	6
N.B.L. Northwest	5'-0 3/8"	5'-3 1/8"	1'-0"	7

ELEVATION "D"

S.B.L.	West Abut.		East Abut.
	North W.W.	South W.W.	
North W.W.	743.24	743.24	
South W.W.	751.50	746.03	
N.B.L.	North W.W.	752.27	747.05
	South W.W.	752.62	748.22

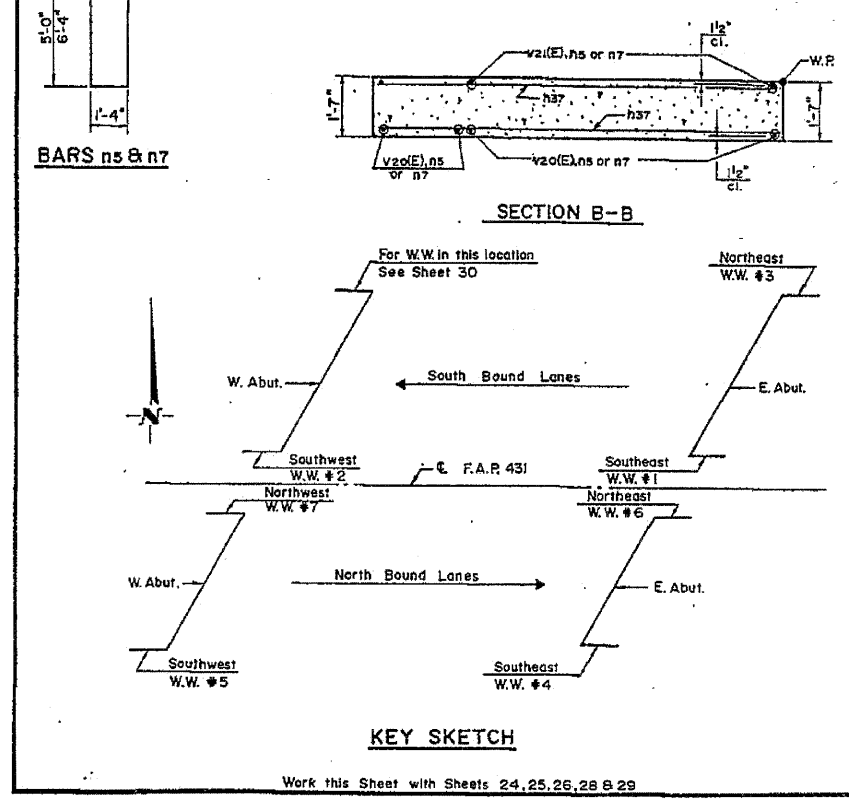
ELEVATION "E"

S.B.L.	West Abut.		East Abut.
	North W.W.	South W.W.	
North W.W.	743.00	743.00	
South W.W.	751.74	745.79	
N.B.L.	North W.W.	752.50	746.81
	South W.W.	752.86	748.01

ELEVATION "F"

S.B.L.	West Abut.		East Abut.
	North W.W.	South W.W.	
North W.W.	735.03	735.03	
South W.W.	741.63	736.41	
N.B.L.	North W.W.	743.86	738.69
	South W.W.	744.12	739.13

FOR INFORMATION ONLY
(NOT INCLUDED IN THIS CONTRACT)



BAR LIST - ONE WINGWALL FOR WINGWALLS #3, #5, #6 & #7

BAR	NO.	SIZE	LENGTH	SHAPE
n37	12	#4	11'-3"	
n38(E)	6	#4	11'-3"	
n5	12	#6	11'-4"	
p33	6	#7	13'-0"	
p34	6	#7	11'-0"	
s8	12	#4	9'-5"	
v20(E)	12	#6	7'-0"	
v21(E)	12	#6	7'-2"	

* Typical except for Wingwall #7
** For Wingwall #7 only

BAR LIST - ONE WINGWALL FOR WINGWALLS #1, #2 & #4

BAR	NO.	SIZE	LENGTH	SHAPE
h37	14	#4	11'-3"	
h38(E)	6	#4	11'-5"	
n7	12	#6	14'-0"	
p33	6	#7	13'-0"	
p34	6	#7	11'-0"	
s8	12	#4	9'-5"	
v20(E)	12	#6	7'-0"	
v21(E)	12	#6	7'-2"	

*** For Wingwalls #1 & #4
*** For Wingwall #2
Reinforcement Bars designated (E) shall be epoxy coated.

WINGWALL DETAILS
F.A.P. ROUTE 431
SECTIONS 22-5HB-1 & 22-1HB-9
DU PAGE CO.
STATION 1250+83.16
STRUCTURE NOS 022-0137 & 022-0138

HSIONG ASSOCIATES LTD.
DESIGNED: C.L. CHECKED: W.H.
DRAWN: F.D.J. & R.H.K. DATE: NOV-04-82

FOR INFORMATION ONLY

benesch
alfred benesch & company
Engineers • Surveyors • Planners
205 North Michigan Avenue, Suite 2400
Chicago, Illinois 60601
312-665-0460 Job No. 10050

SHEET NO. 29	F.A.I. RTE.	SECTION	COUNTY	TOTAL SHEETS	SHEET NO.
	290	22(1, 1-1, 2&3)RS-7	DUPAGE	546	442
32 SHEETS	CONTRACT NO. 60G51		FED. ROAD DIST. NO. ILLINOIS FED. AID PROJECT		

EXISTING PLAN INFORMATION 14 OF 17
STRUCTURE NO. 022-0137

x:\10000s\10050\engineering\documents-contract\1\SN_022-0138_0137_Rch\wing-Rd\0137-60G51-029-Exis.tplan_14.dgn 18:15:10 11/12/2009