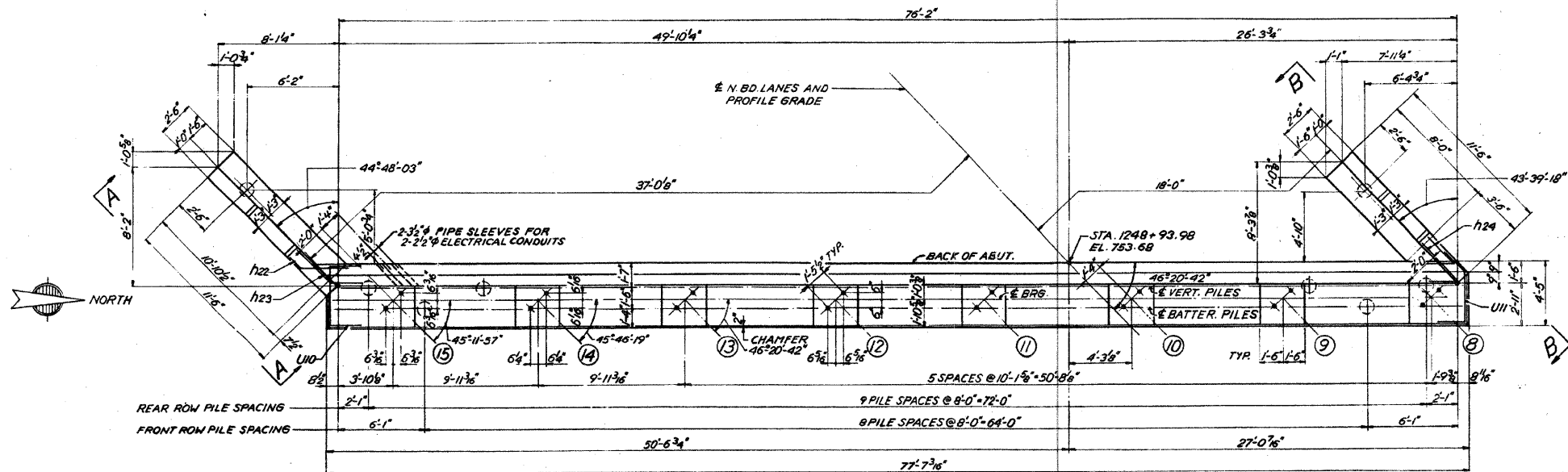


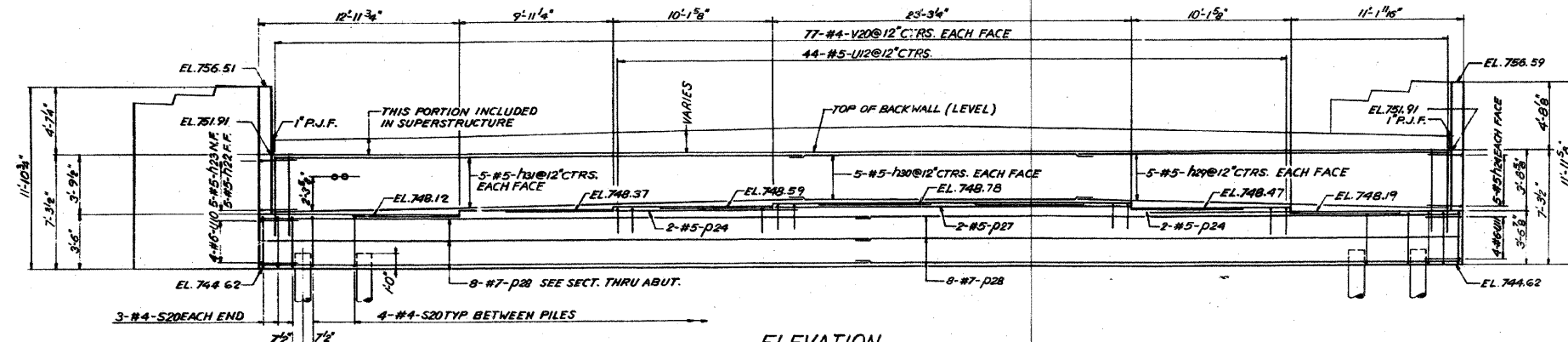
STATE OF ILLINOIS
DEPARTMENT OF TRANSPORTATION

ROUTE NO.	SECTION	COUNTY	TOTAL SHEETS	SHEET NO.
F.A. 61	22(1, 1-1, 2&3)RS-7	DUPAGE	181	105
STA.	TO STA.			
8 P. S. REG. NO. 4	ILLINOIS	PROJECT		

SHEET 18 OF 25



PLAN
SCALE: 1/4" = 1'-0"



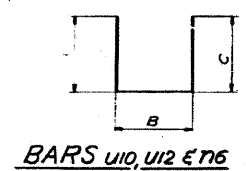
ELEVATION

BILL OF MATERIAL

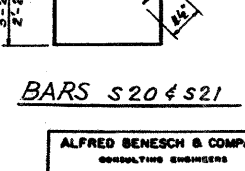
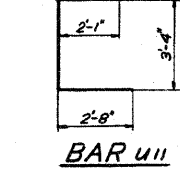
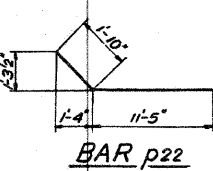
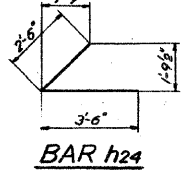
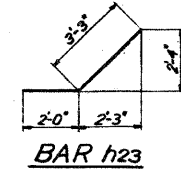
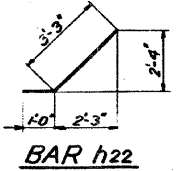
BAR NO.	NO.	SIZE	LENGTH	SHAPE
h22	5	#5	4-3	✓
h23	5	#5	5-3	✓
h24	10	#5	6-0	✓
h25	36	#4	11-3	✓
h26	4	#4	7-6	✓
h27	4	#4	3-6	✓
h29	10	#5	24-9	✓
h30	10	#5	20-0	✓
h31	10	#5	35-0	✓
h76	24	#5	8-9	✓
D21	6	#7	13-0	✓
D22	3	#7	13-3	✓
D23	3	#7	12-0	✓
D24	4	#5	11-3	✓
D27	2	#5	23-0	✓
D28	16	#7	39-6	✓
S20	78	#4	15-3	✓
S21	24	#4	9-5	✓
U10	4	#6	9-0	✓
U11	4	#6	9-0	✓
U12	44	#4	6-9	✓
V14	16	#4	8-3	✓
V17	16	#4	7-6	✓
V19	16	#4	7-0	✓
V20	154	#4	5-6	✓
CLASS X CONCRETE	CU. YDS.	73.5		
REINF. BARS	LBS.	5210		
CONCRETE PILES	LIN. FT.	1300		

PILE DATA

TYPE	CONCRETE
CAPACITY	30 TONS
EST. LENGTH	65'
*NO. REQUIRED	21
*INCLUDE 1 TEST PILE	



BAR	A	B	C
U10	2'-6"	4'-0"	2'-6"
U12	2'-1"	2'-7"	2'-1"
T16	3'-9"	9'	3'-9"



WEST ABUTMENT-NORTH BOUND
F.A.P. ROUTE 61 OVER
ILLINOIS ROUTE 53 (ROHLWING ROAD)
PROJECT
SECTIONS 22-5HB-1 & 22-1HB-9
DU PAGE COUNTY
STATION 1250+83.16

ALFRED BENESCH & COMPANY
CONSULTING ENGINEERS
10 S. WABASH AVE. CHICAGO, ILLINOIS

FOR INFORMATION ONLY

benesch

alfred benesch & company
Engineers - Surveyors - Planners
205 North Michigan Avenue, Suite 2400
Chicago, Illinois 60601
312-565-0450 Job No. 10050

SHEET NO. 30	F.A.I. RTE. 290	SECTION 22(1, 1-1, 2&3)RS-7	COUNTY DUPAGE	TOTAL SHEETS 546	SHEET NO. 443
32 SHEETS	CONTRACT NO. 60G51		ILLINOIS FED. AID PROJECT		

EXISTING PLAN INFORMATION 15 OF 17
STRUCTURE NO. 022-0137

x:\10000s\10050\engineering-documents\contract\1\SN_022-0138_0137_Rohlwing-Rd\0137-60G51-030-Exisplan-15.dgn 18:15:16 11/12/2009