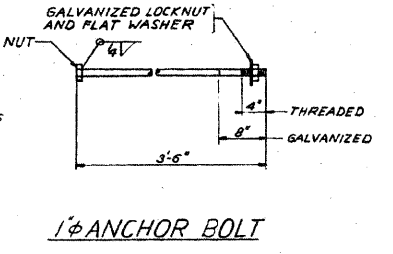
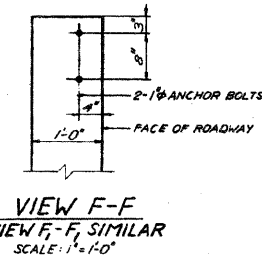
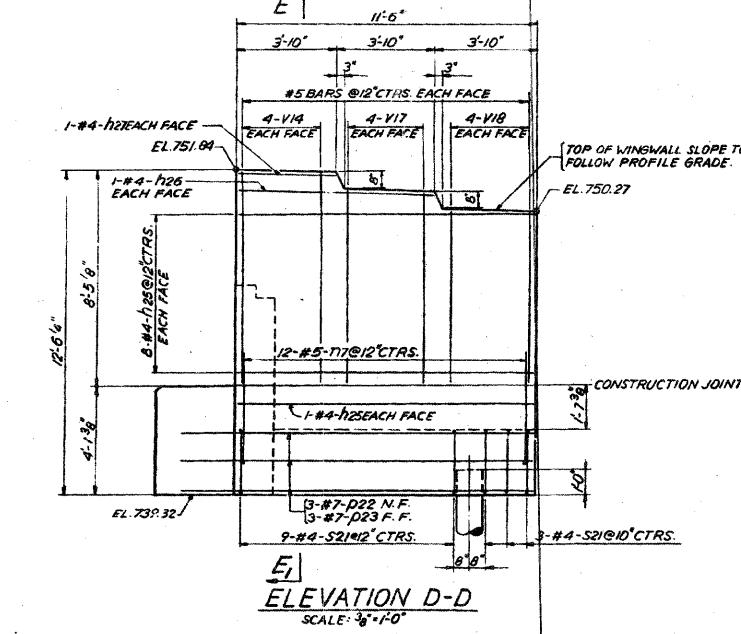
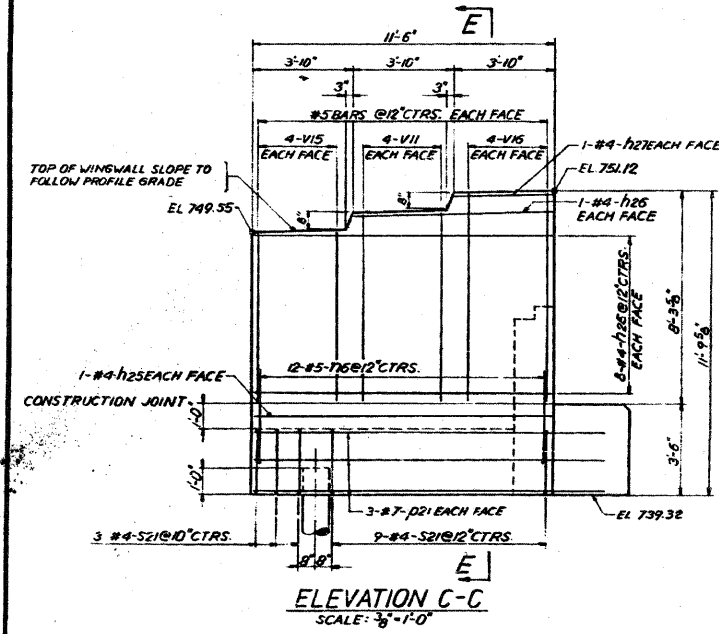
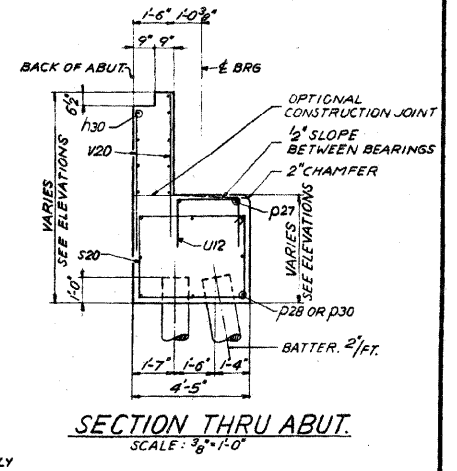
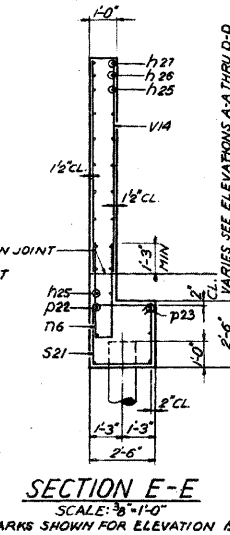
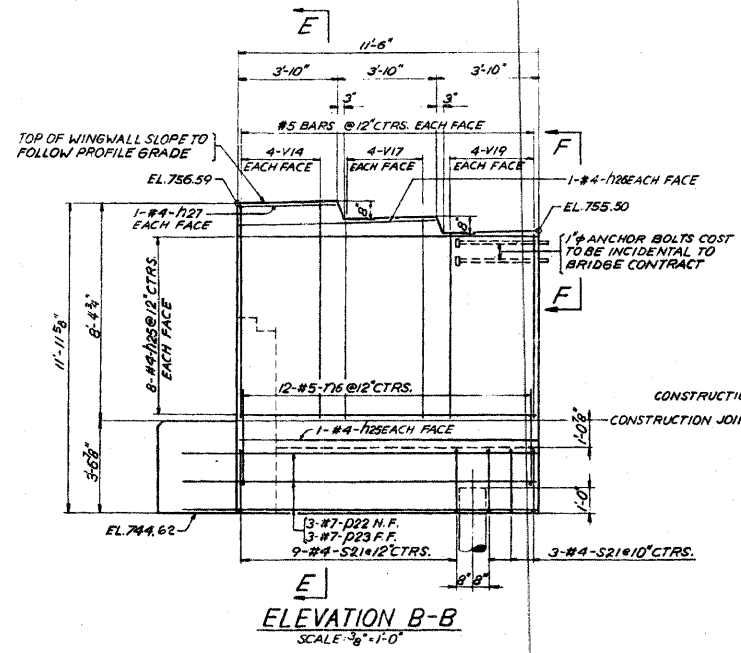
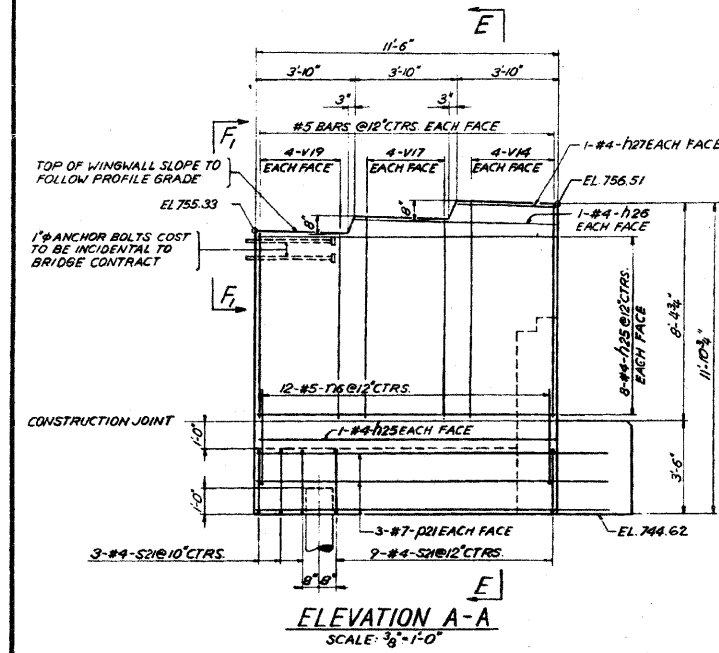


STATE OF ILLINOIS
DEPARTMENT OF TRANSPORTATION

ROUTE/SECTION	COUNTY	TOTAL SHEETS	SHEET NO.
F.A.R. 61	DUPAGE	181	107
STA.	TO STA.		
S.P. & REG. NO. 4	ILLINOIS	PROJECT	

SHEET 20 OF 25



ABUTMENT DETAILS-NORTH BOUND
F.A.P. ROUTE 61 OVER
ILLINOIS ROUTE 53 (ROHLWING ROAD)
PROJECT
SECTIONS 22-5HB-1 & 22-1HB-9
DUPAGE COUNTY
STATION 1250+83.16

ALFRED BENESCH & COMPANY
CONSULTING ENGINEERS
38 S. WABASH AVE. CHICAGO, ILLINOIS

benesch

alfred benesch & company
Engineers • Surveyors • Planners
205 North Michigan Avenue, Suite 2400
Chicago, Illinois 60601
312-565-0450 Job No. 10050

SHEET NO. 32	F.A.I. RTE.	SECTION	COUNTY	TOTAL SHEETS	SHEET NO.
	290	221, 1-1, 2&3RS-7	DUPAGE	546	445
32 SHEETS	CONTRACT NO. 60G51				
FED. ROAD DIST. NO.		ILLINOIS FED. AID PROJECT			

EXISTING PLAN INFORMATION 17 OF 17
STRUCTURE NO. 022-0137

18:15:40 11/12/2009 x:\10000s\10050\engineering\ing_documents\contract\1\SN.022-0138-0137_Rohlw.ring_Rd\0137-60G51-032-Existplan.17.dgn