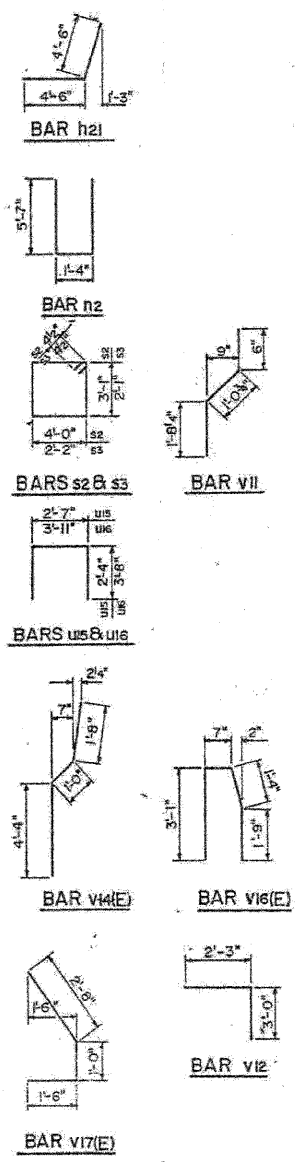
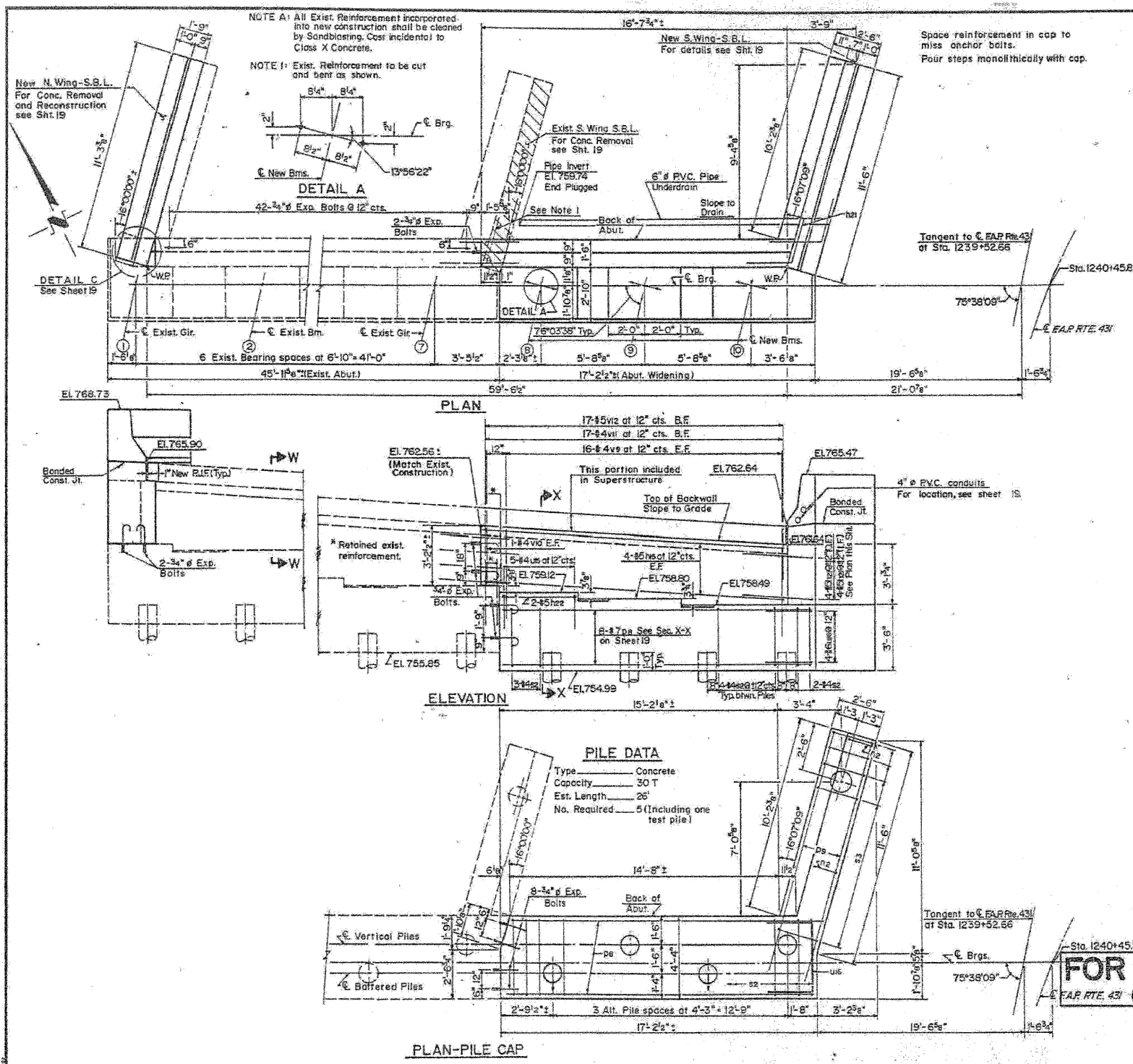


STATE OF ILLINOIS
DEPARTMENT OF TRANSPORTATION

ROUTE NO.	SECTION	COUNTY	TOTAL SHEETS	SHEET NO.
22-5HB	DU PAGE	ILLINOIS	131	65
SHEET 18 OF 59				



BILL OF MATERIAL

BAR NO.	SIZE	LENGTH	SHAPE
h15	#8	15'-6"	—
h16	#4	11'-3"	—
h16(E)	#4	11'-3"	—
h21	#8	9'-0"	—
h22	#5	4'-0"	—
h24(E)	#4	11'-0"	—
n2	#6	12'-6"	U
p e	#7	16'-6"	—
p g	#7	11'-3"	—
s2	#4	14'-11"	□
s3	#4	9'-3"	□
u15	#4	7'-3"	□
u16	#6	11'-3"	□
v g	#4	4'-9"	—
v10	#4	2'-6"	—
v11	#4	3'-3"	—
v12	#5	5'-3"	—
v16(E)	#6	7'-0"	—
v16(E)	#5	6'-3"	—
v16(E)	#5	6'-9"	—
v17(E)	#5	5'-2"	—

ITEM	UNIT	QUANTITY
Class X Concrete	Cu. Yds.	22.6
Reinforcement Bars (Epoxy Coated)	Lbs.	520
Reinforcement Bars	Lbs.	1,520
Concrete Piles	Lin. Ft.	104
Test Pile Concrete	Each	1
Expansion Bolts (#4's)	Each	54
Concrete Removal	Cu. Yds.	4
Structure Excavation	Cu. Yds.	30
Pipe Underdrain 6"	Lin. Ft.	18
Porous Granular Embankment	Cu. Yds.	16

FOR INFORMATION ONLY
(NOT INCLUDED IN THIS CONTRACT)

EAST ABUTMENT WIDENING-S.B.L.
F.A.P. ROUTE 431
SECTION 22-5HB
DU PAGE COUNTY
STATION 1239+52.66
STRUCTURE NO. 022-0111

MTA, INCORPORATED
DESIGNED M.J.S. CHECKED P.L.
DATE DATE NO.

PREFABRICATION CONTRACT

FOR INFORMATION ONLY

benesch

alfred benesch & company
Engineers - Surveyors - Planners
205 North Michigan Avenue, Suite 2400
Chicago, Illinois 60601
312-565-0450 Job No. 10050

SHEET NO. 24	F.A.I. RTE. 290	SECTION 22(1, 1-1, 2&3)RS-7	COUNTY DUPAGE	TOTAL SHEETS 546	SHEET NO. 469
28 SHEETS					
CONTRACT NO. 60G51					
FED. ROAD DIST. NO.		ILLINOIS		FED. AID PROJECT	

EXISTING PLAN INFORMATION 9 OF 13
STRUCTURE NO. 022-0111

18:18:00 x:\100000\100050\engineer\ing_documents\contract\1\SN.022-0111-0112.Lake-St\0111-60G51-024-Exstplan-09.dgn 11/2/2009