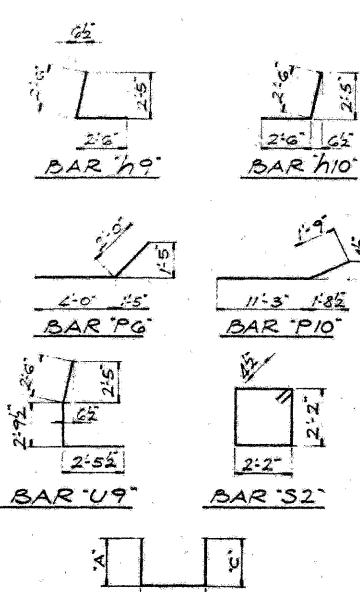
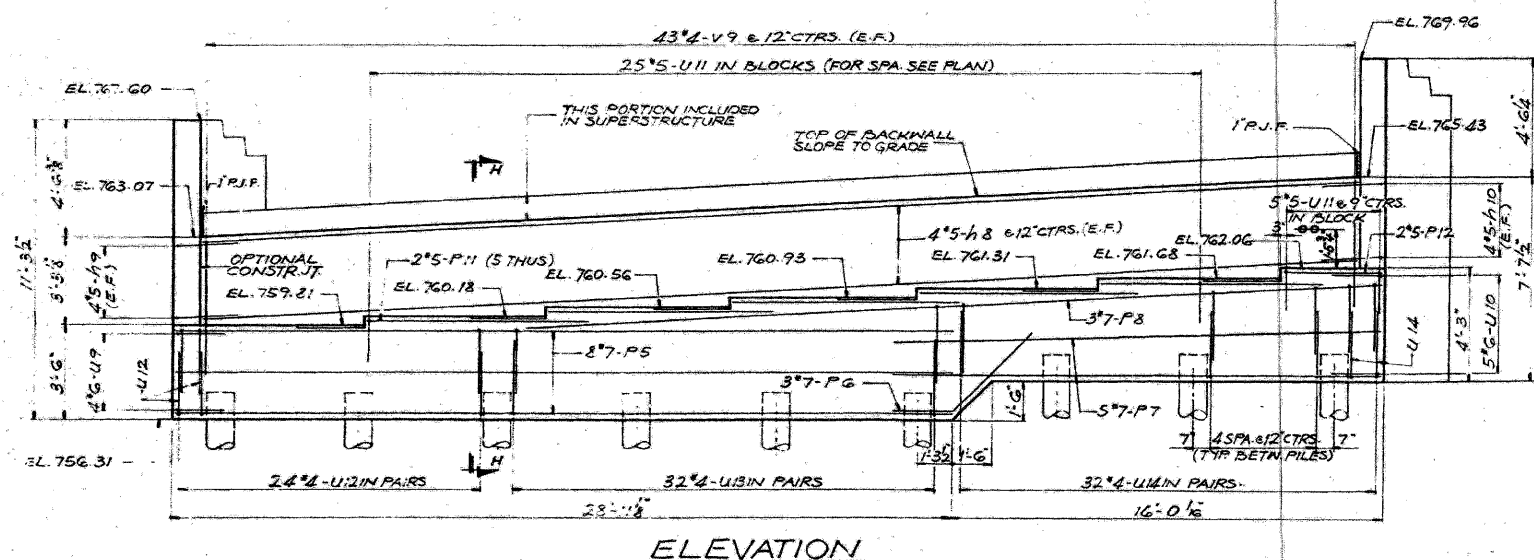
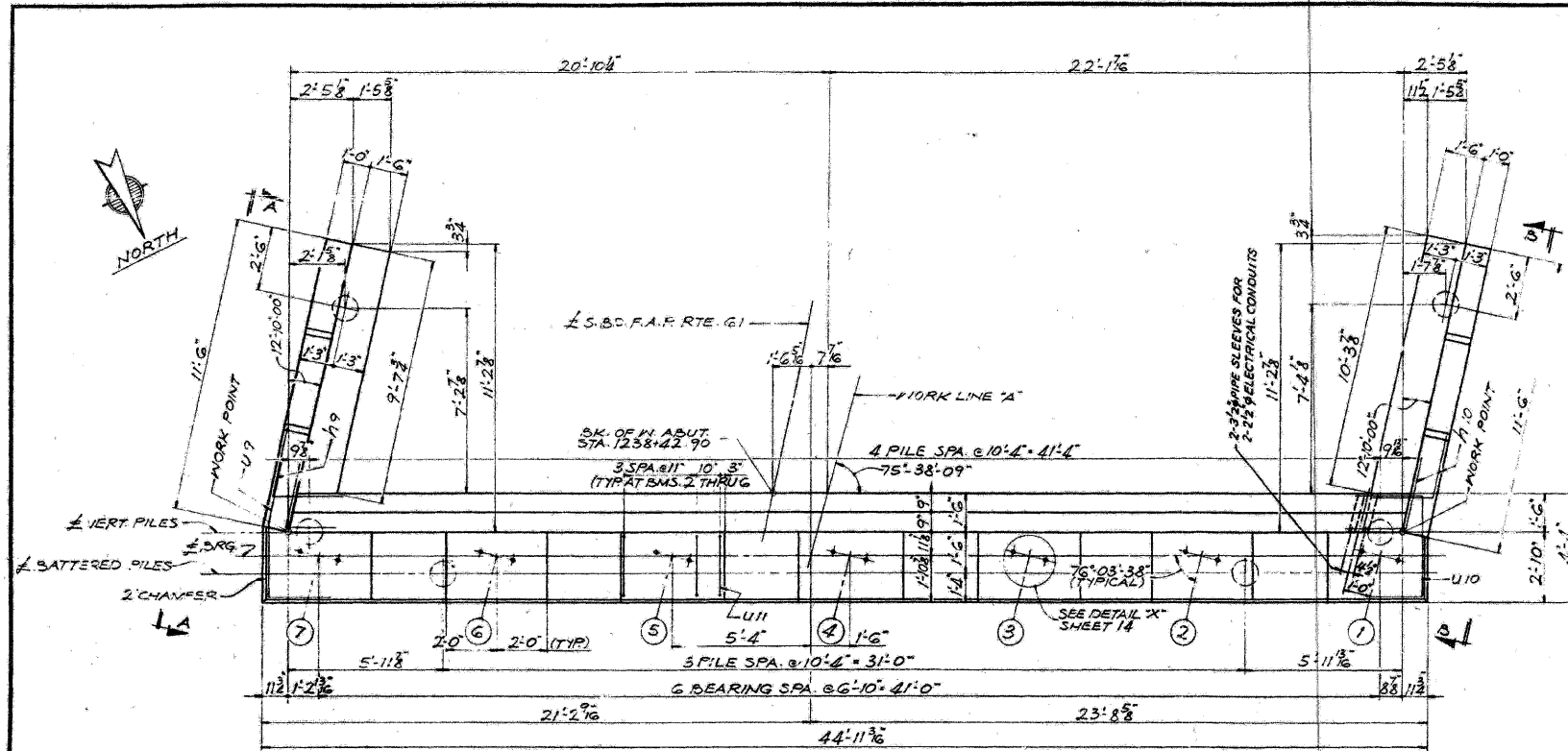


STATE OF ILLINOIS
DEPARTMENT OF TRANSPORTATION

ROUTE NO.	SECTION	COUNTY	TOTAL SHEETS	SHEET NO.
F.A.R. 22-5HB	DUPAGE	181	77	
STA.	TO STA.			
S.P. & REC. NO. 4 ILLINOIS PROJECT				

SHEET 13 OF 23



MARK	A'	B'	C'
P2	3'-6"	9'	3'-6"
P3	4'-3"	9'	4'-8"
U10	2'-6 1/2"	3'-11"	2'-6 1/2"
U12	2'-3"	4'-0"	2'-3"
U13	2'-0 1/2"	4'-0"	2'-0 1/2"
U14	2'-5"	4'-0"	2'-6"

BILL OF MATERIAL

BAR	No	SIZE	LENGTH	SHAPE
h8	8	#5	42'-6"	---
h9	3	#5	5'-0"	L
h10	3	#5	5'-0"	---
h11	34	#4	11'-3"	---
h12	4	#4	7'-5"	---
h13	4	#4	3'-6"	---
P2	13	#5	7'-9"	---
P3	13	#5	9'-3"	---
P5	8	#7	28'-6"	---
P6	3	#7	6'-0"	---
P7	5	#7	18'-0"	---
P8	3	#7	31'-6"	---
P9	9	#7	13'-0"	---
P10	3	#7	13'-0"	---
P11	10	#5	8'-0"	---
P12	2	#5	3'-3"	---
S2	24	#4	9'-5"	---
U9	4	#6	7'-9"	L
U10	5	#6	9'-0"	---
U11	30	#5	5'-6"	---
U12	24	#4	8'-6"	---
U13	32	#4	9'-9"	---
U14	32	#4	9'-0"	---
V9	36	#4	4'-6"	---
V10	16	#4	6'-3"	---
V11	16	#4	7'-0"	---
V12	10	#4	7'-6"	---
V13	10	#4	7'-9"	---

REINFORCEMENT BARS	LBS.	3720
CONCRETE PILES	LIN. FT.	500
CLASS 'X' CONCRETE	CU. YDS.	48.0
TEST PILE (CONCRETE)	EACH	1

NOTE: ALL BAR DIMENSIONS ARE OUT TO OUT

FILE DATA
TYPE: CONCRETE
CAPACITY: 30 TONS
EST. LENGTH: 50 FT.
* NO. REQUIRED: 11
* INCLUDES 1 TEST PILE

WEST ABUTMENT-SOUTH BOUND
F.A. ROUTE 61 OVER
F.A. ROUTE 6 (LAKE STREET)
PROJECT
SECTION 22-5HB
DUPAGE COUNTY
STATION 1239+49.90

ALFRED BENESCH & COMPANY
CONSULTING ENGINEERS
10 S. WABASH AVE. CHICAGO, ILLINOIS

FOR INFORMATION ONLY

benesch

alfred benesch & company
Engineers • Surveyors • Planners
205 North Michigan Avenue, Suite 2400
Chicago, Illinois 60601
312-665-0460 Job No. 10050

SHEET NO. 26	F.A.I. RTE. 290	SECTION 221, 1-1, 2&3RS-7	COUNTY DUPAGE	TOTAL SHEETS 546	SHEET NO. 471
28 SHEETS	CONTRACT NO. 60G51		FED. ROAD DIST. NO. ILLINOIS FED. AID PROJECT		

EXISTING PLAN INFORMATION 11 OF 13
STRUCTURE NO. 022-0111

181815
11/12/2009
x:\10000s\10050\engineer\ing_documents\contract\1\SN.022.011.011.Lake.St\011-60G51-026-Existplan-11.dgn