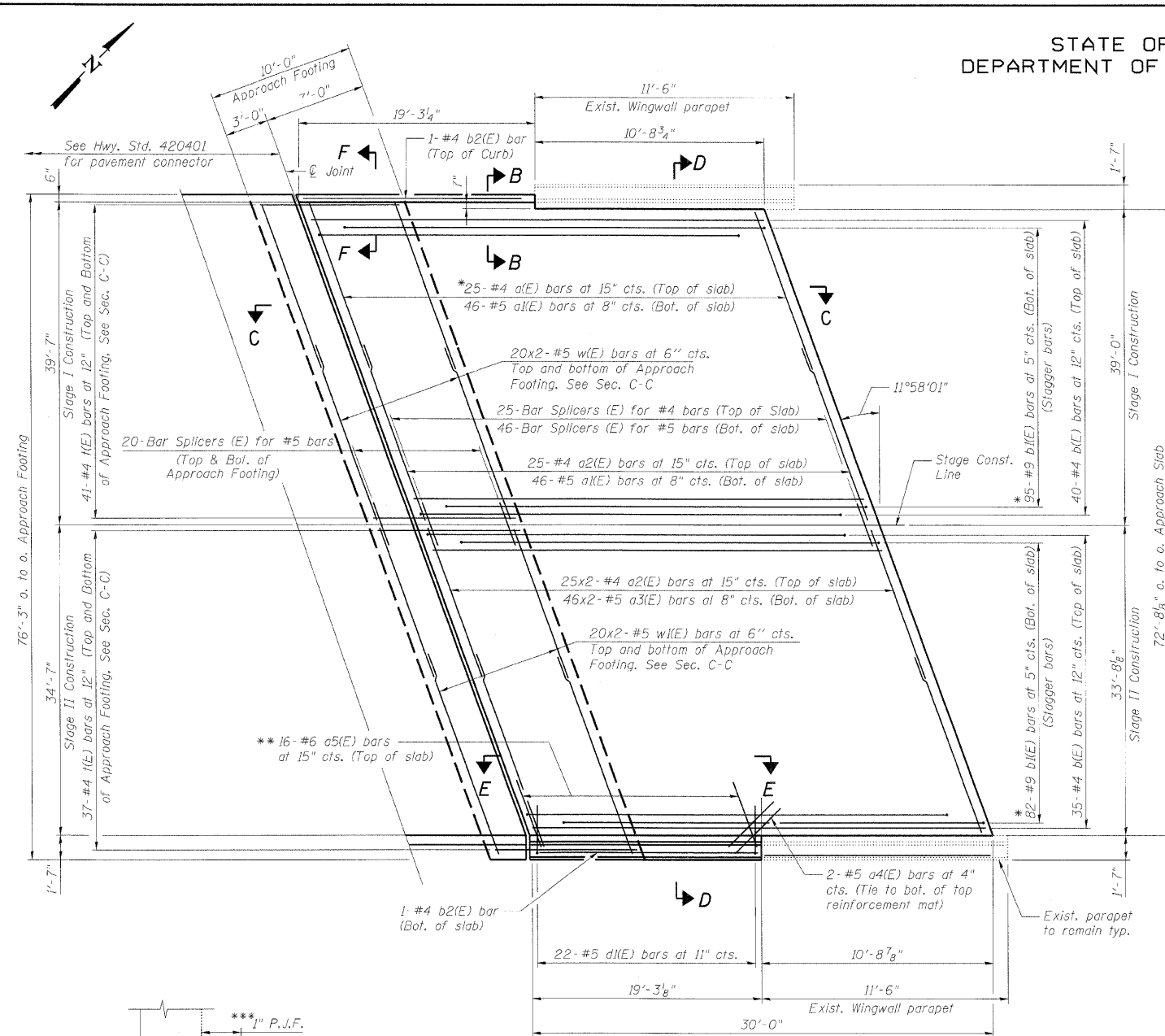
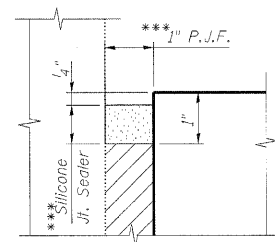


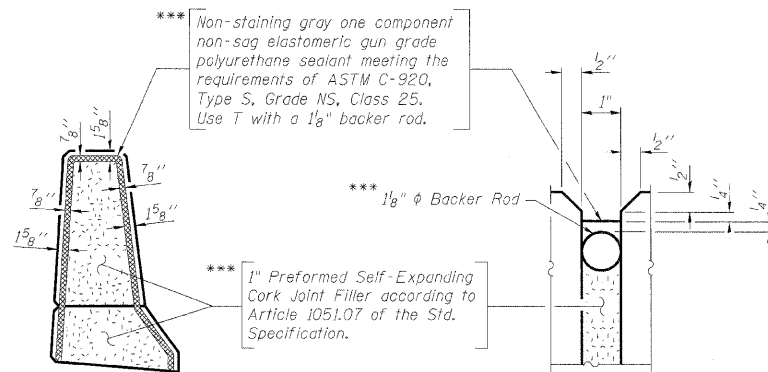
STATE OF ILLINOIS
DEPARTMENT OF TRANSPORTATION



PLAN

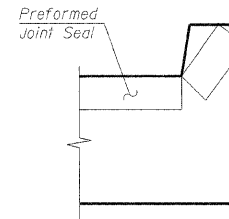


DETAIL 1



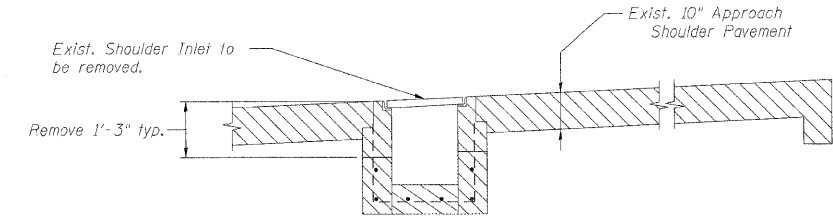
DETAIL 2

- * Tilt bars as required to maintain clearance.
- ** Alternate with a2(E) bars.
- *** Cost included with Concrete Superstructure.

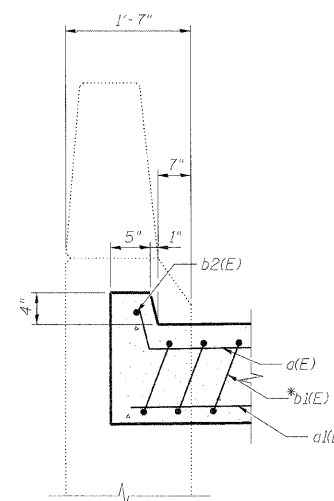


VIEW F-F

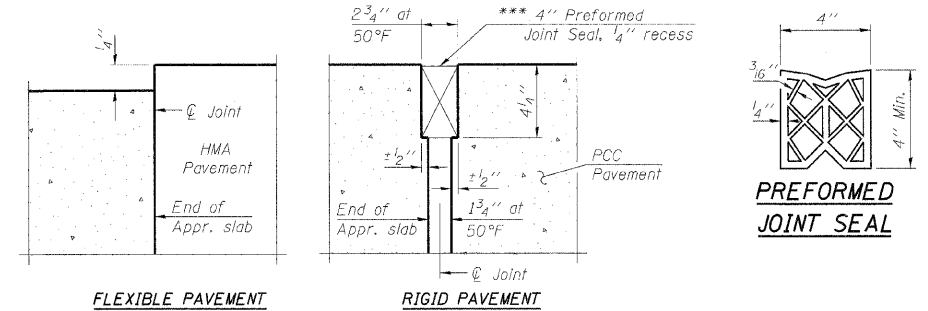
Angle Preformed Joint Seal at 45° at curbs when req'd for drainage.



APPROACH SLAB REMOVAL DETAIL AT INLET



SECTION B-B



DETAIL 3

Note:

Work this sheet with South Bridge Approach Slab Details (2 of 2).

SOUTH BRIDGE APPROACH SLAB DETAILS
(1 OF 2)
STRUCTURE NO. 022-0112

DESIGNED -	JLS/MFB
CHECKED -	KWS
DRAWN -	RMG
CHECKED -	KWS

benesch

alfred benesch & company
Engineers • Surveyors • Planners
205 North Michigan Avenue, Suite 2400
Chicago, Illinois 60601
312-665-0480 Job No. 10050

SHEET NO. 6	F.A.I. RTE.	SECTION	COUNTY	TOTAL SHEETS	SHEET NO.
	290	22(1, 1-1, 2&3)RS-7	DUPAGE	546	479
28 SHEETS	CONTRACT NO. 60G51				
FED. ROAD DIST. NO.		ILLINOIS	FED. AID PROJECT		

x:\10000s\10050\engineering-documents\contract\1\SNL022-0111-0112.Lake-St\0112-60G51-006-Approach-1.dgn 18:18:58 11/12/2009