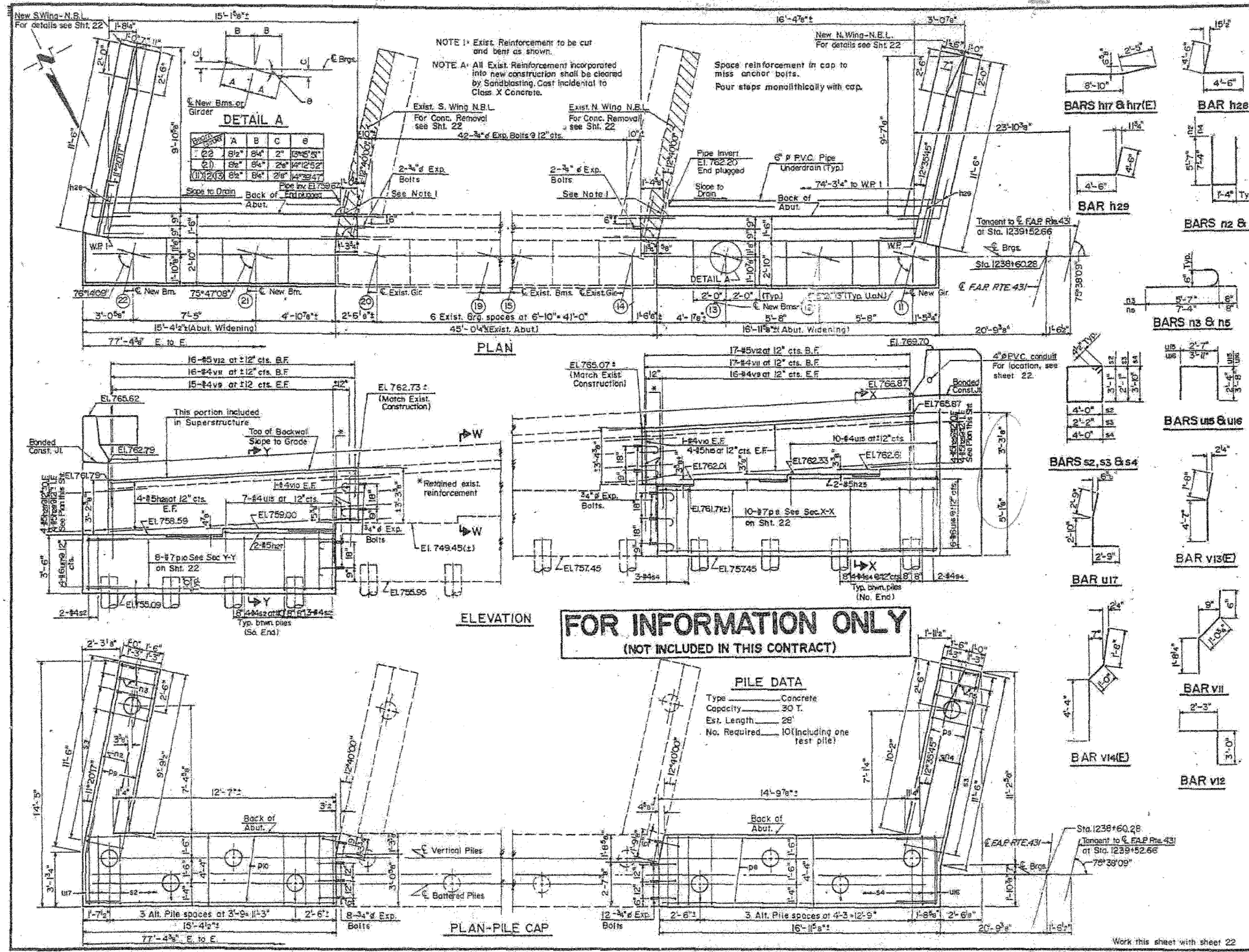


STATE OF ILLINOIS
DEPARTMENT OF TRANSPORTATION



PROJECT NO.	SECTION	COUNTY	TOTAL SHEETS	SHEET NO.
EAR 431	22-5HB	DUPAGE	131	67
SHEET 20 OF 39				

BILL OF MATERIAL

BAR NO.	NO.	SIZE	LENGTH	SHAPE
h15	8	#5	15'-6"	
h17	14	#4	11'-3"	
h17(E)	2	#4	11'-3"	
h18	14	#4	11'-3"	
h18(E)	10	#4	11'-3"	
h23	2	#5	8'-0"	
h26	8	#5	15'-0"	
h27	2	#5	6'-6"	
h28	8	#5	9'-0"	
h28	8	#5	9'-0"	
n2	9	#6	12'-6"	
n3	6	#6	6'-3"	
n4	9	#6	16'-0"	
n5	6	#6	8'-0"	
p8	10	#7	16'-6"	
p9	12	#7	11'-3"	
p10	6	#7	15'-0"	
s2	17	#4	14'-11"	
s3	24	#4	9'-3"	
s4	17	#4	16'-5"	
u15	17	#4	7'-3"	
u16	5	#6	11'-3"	
u17	4	#6	8'-4"	
v9	62	#4	4'-9"	
v10	4	#4	2'-6"	
v11	53	#4	3'-3"	
v12	33	#5	5'-3"	
v13(E)	6	#6	6'-3"	
v14(E)	18	#6	7'-0"	
v15(E)	24	#6	6'-3"	

ITEM	UNIT	QUANTITY
Class X Concrete	Cu. Yds.	42.1
Reinforcement Bars (Epoxy Coated)	Lbs.	580
Reinforcement Bars	Lbs.	3,230
Concrete Piles	L in. Ft.	252
Test Pile Concrete	Each	1
Expansion Bolts (2"x8")	Each	66
Concrete Removal	Cu. Yds.	4
Structure Excavation	Cu. Yds.	55
Pipe Underdrain 6"	L in. Ft.	33
Porous Granular Embankment	CU. Yds.	316

WEST ABUTMENT WIDENING-NBL
E.A.P. ROUTE 431
SECTION 22-5HB
DU PAGE COUNTY
STATION 1239+52.66
STRUCTURE NO. 022-0112

MFA, INCORPORATED
DESIGNED M.L.S. CHECKED R.L.
DRAWN G.S. DATE

FOR INFORMATION ONLY

benesch
alfred benesch & company
Engineers • Surveyors • Planners
205 North Michigan Avenue, Suite 2400
Chicago, Illinois 60601
312-565-0450 Job No. 10050

SHEET NO. 23	F.A.I. RTE. 290	SECTION 22(1, 1-1, 2&3)RS-7	COUNTY DUPAGE	TOTAL SHEETS 546	SHEET NO. 496
28 SHEETS	CONTRACT NO. 60G51		FED. ROAD DIST. NO. ILLINOIS FED. AID PROJECT		

EXISTING PLAN INFORMATION 8 OF 13
STRUCTURE NO. 022-0112

x:\10000s\10050\engineering\documents\contract\1\SN.022-0112.Lake-St.0112-60G51-023-Exisplan-05.dwg 18:20:29 11/12/2009