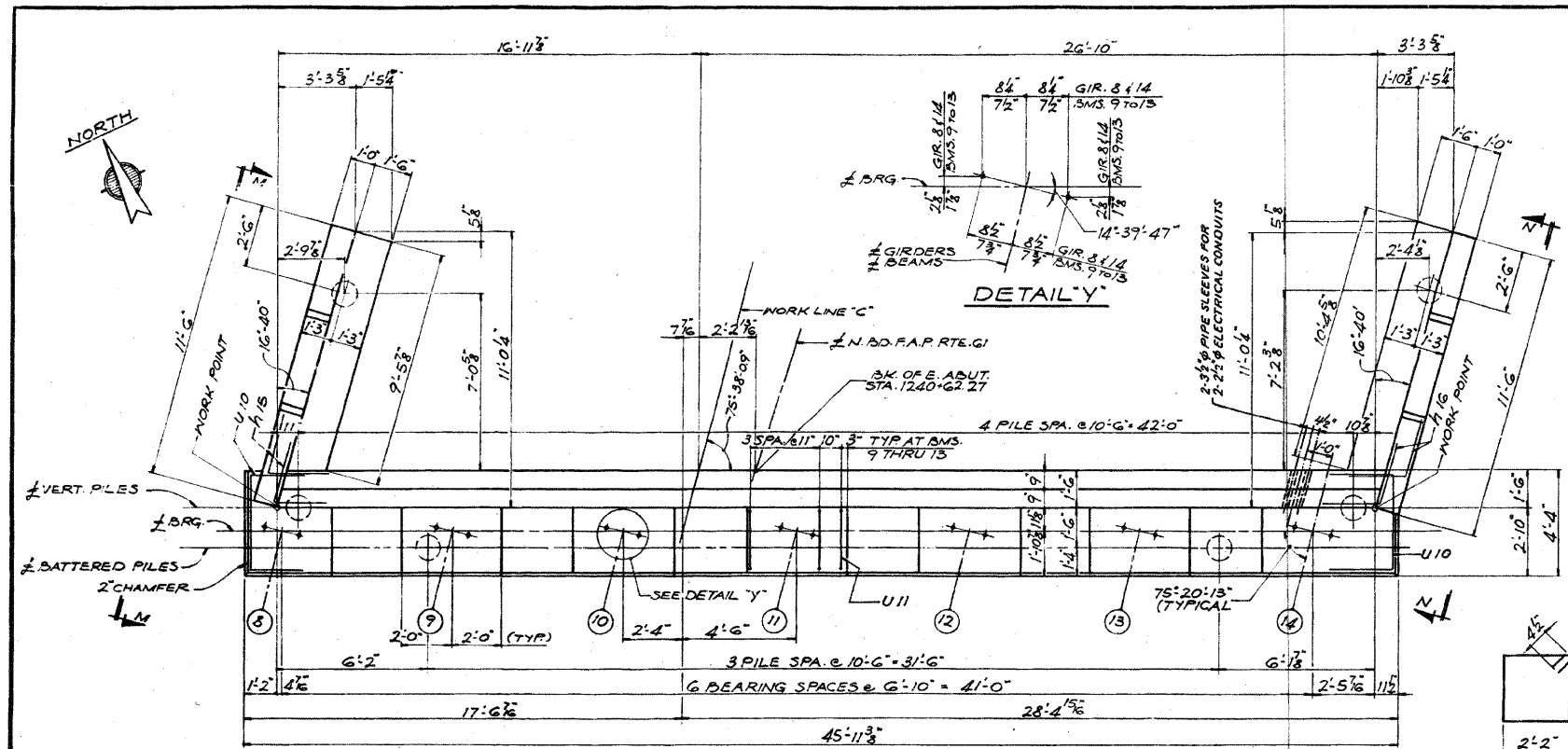


STATE OF ILLINOIS
DEPARTMENT OF TRANSPORTATION



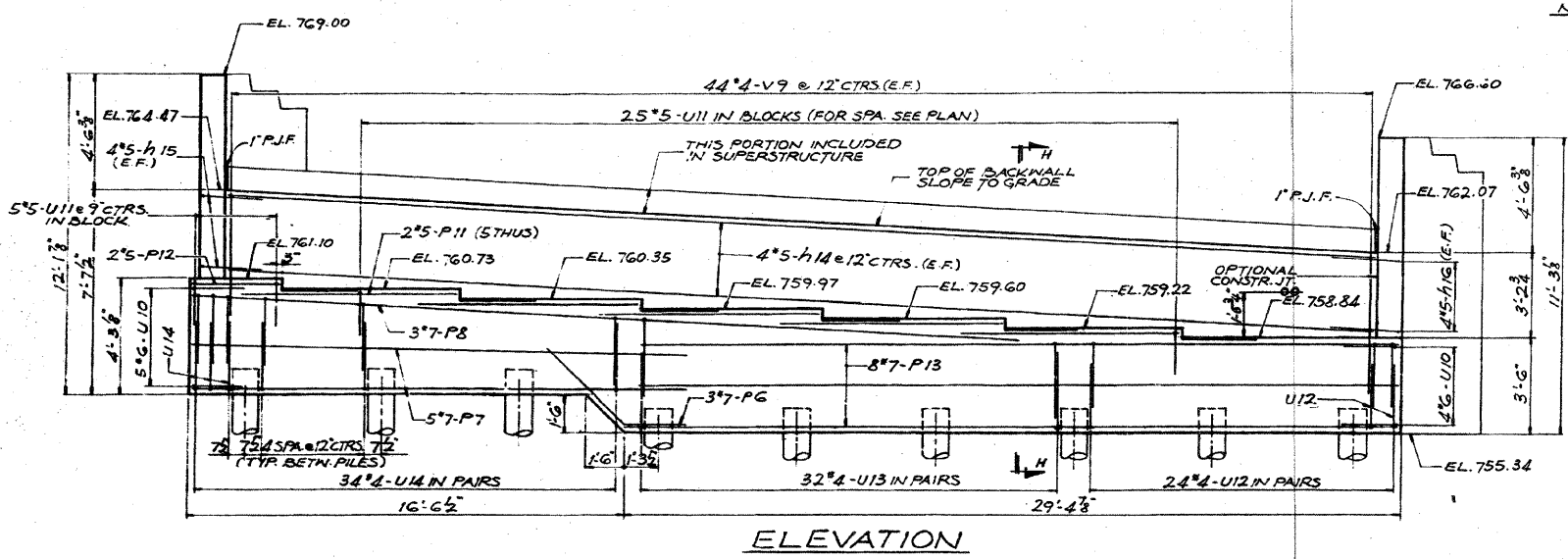
PROJECT NO.	SECTION	COUNTY	TOTAL SHEETS	SHEET NO.
F.A.P.G. 22-5HB	DU PAGE	ILLINOIS	181	81
STA.	TO STA.			
3. P. R. REG. NO. 4	PROJECT			
SHEET 17 OF 23				

BILL OF MATERIAL

BAR No.	SIZE	LENGTH	SHAPE
h11	3/4"	11'-3"	—
h12	1/2"	7'-5"	—
h13	1/2"	3'-6"	—
h14	5/8"	43'-3"	—
h15	5/8"	5'-0"	—
h16	5/8"	5'-0"	—
n2	1/3"	7'-9"	U
n3	1/3"	9'-3"	U
P6	3"	6'-0"	—
P7	5"	18'-0"	—
P8	5"	31'-6"	—
P9	12"	13'-0"	—
P11	10"	8'-0"	—
P12	2"	3'-3"	—
P13	8"	29'-0"	—
S2	24"	9'-5"	□
U10	9"	9'-0"	U
U11	30"	5'-6"	—
U12	24"	8'-6"	—
U13	32"	9'-9"	—
U14	34"	9'-0"	—
V9	88"	4'-6"	—
V10	16"	6'-3"	—
V11	16"	7'-0"	—
V12	10"	7'-6"	—
V13	10"	7'-9"	—
REINFORCEMENT BARS	LBS.	3760	
CONCRETE PILES	LN. FT.	450	
CLASS 'X' CONCRETE	CU. YDS.	485	
TEST PILE (CONCRETE)	EACH	1	

MARK	"A"	"B"	"C"
n2	3'-6"	9"	3'-6"
n3	4'-3"	9"	4'-3"
U10	2'-6"	3'-11"	2'-6"
U11	7'-6"	2'-6"	7'-6"
U12	2'-8"	4'-0"	2'-8"
U13	2'-10"	4'-0"	2'-10"
U14	2'-6"	4'-5"	2'-6"

NOTE:
ALL BAR DIMENSIONS ARE OUT TO OUT.



FILE DATA

TYPE: CONCRETE
CAPACITY: 30 TONS
EST. LENGTH: 45 FT.
*NO. REQUIRED: 11
*INCLUDES 1 TEST PILE

EAST ABUTMENT-NORTH BOUND
F.A. ROUTE 61 OVER
F.A. ROUTE 6 (LAKE STREET)
PROJECT
SECTION 22-5HB
DU PAGE COUNTY
STATION 1239+49.90

ALFRED BENESCH & COMPANY
CONSULTING ENGINEERS
18 S. WABASH AVE. CHICAGO, ILLINOIS

FOR INFORMATION ONLY

benesch
Engineers • Surveyors • Planners
205 North Michigan Avenue, Suite 2400
Chicago, Illinois 60601
312-565-0450 Job No. 10050

SHEET NO. 27 28 SHEETS	F.A.I. RTE. 290 355	SECTION 22(1, 1-1, 2&3)RS-7	COUNTY DUPAGE	TOTAL SHEETS 546	SHEET NO. 500
	CONTRACT NO. 60G51				
FED. ROAD DIST. NO. ILLINOIS FED. AID PROJECT					

EXISTING PLAN INFORMATION 12 OF 13
STRUCTURE NO. 022-0112

X:\10000s\10050\engineering\documents\contract\1\NSN_022_0111_0112_Lake.St\0112_60G51_027-Exisplan_12.dgn
 18:20:58
 11/12/2009