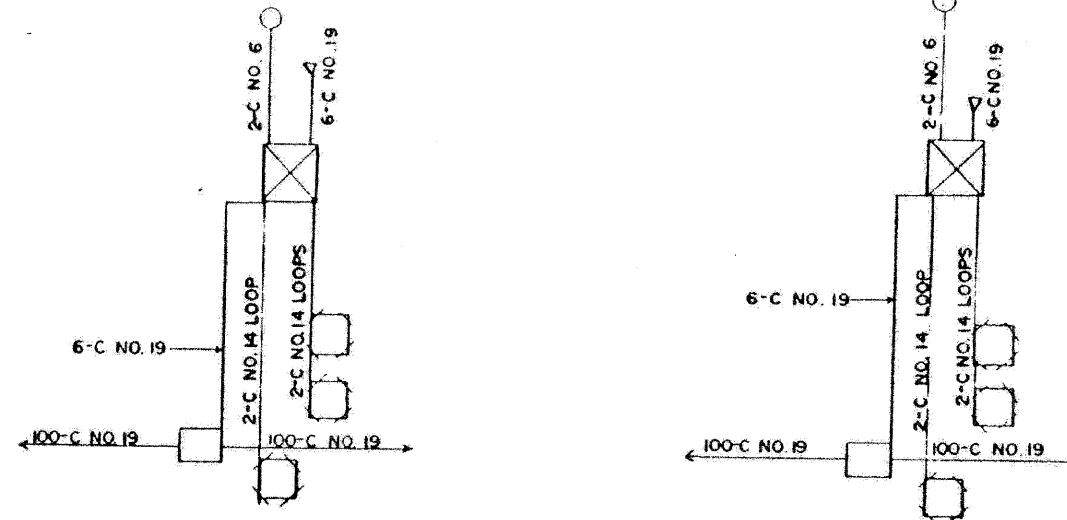


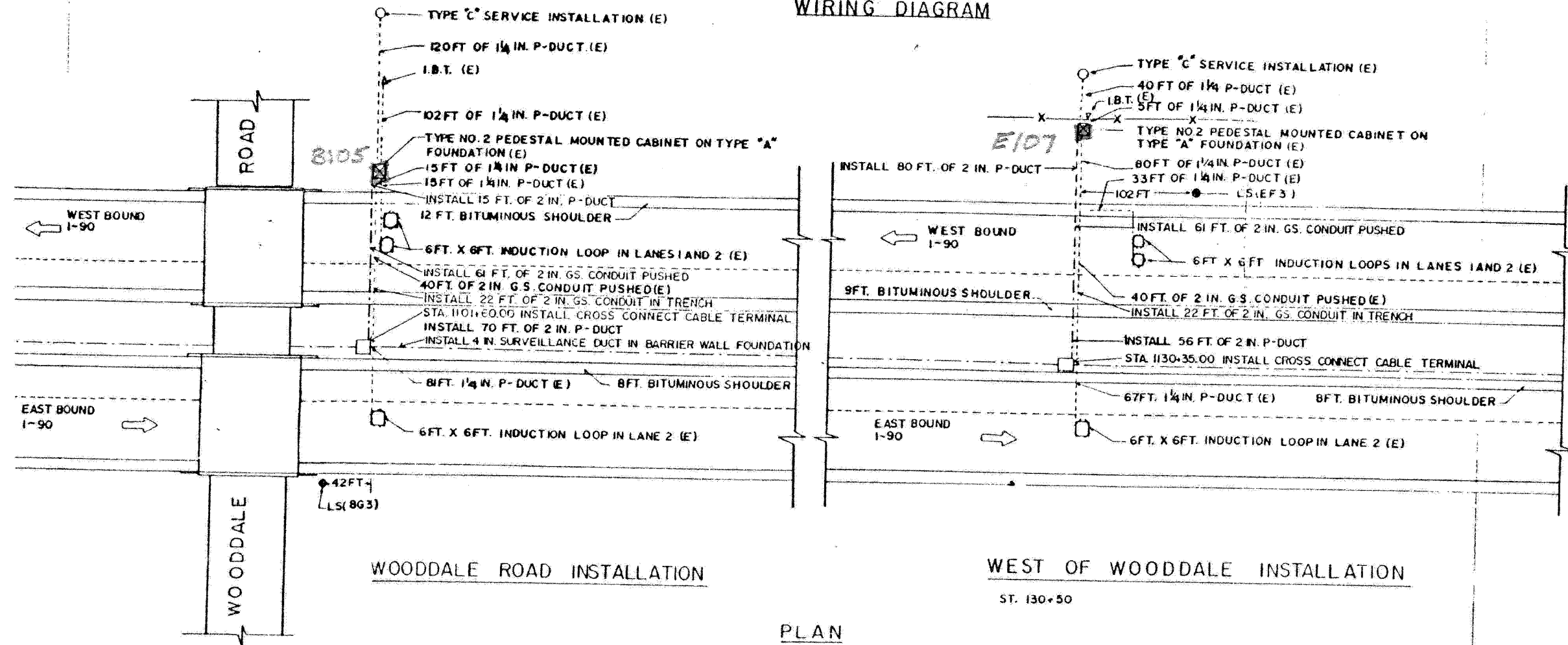
SUMMARY OF QUANTITIES (THIS SHEET)		
DESCRIPTION	UNIT	QUANTITY
ELECTRIC CABLE IN CONDUIT, LEAD-IN, NO. 18 4/C, TWISTED, SHIELDED	LF	504
INDUCTION LOOP	LF	204

NOTE:

IDOT RECORD PLANS PROVIDED FOR INFORMATIONAL PURPOSES ONLY. THE CONTRACTOR IS RESPONSIBLE FOR VERIFYING THE LOCATION AND EXTENT OF WORK ASSOCIATED WITH REPLACEMENT OF INDUCTION LOOPS, LEAD-IN CABLE AND RELATED WORK.



WIRING DIAGRAM



FILE NAME =	DESIGNED - GHT	REVISED -
...N\Signale\p\In_ABC.C1.ts.16.dgn	DRAWN - TMB	REVISED -
USER NAME = tblank	CHECKED - MPV	REVISED -
PLOT DATE = 11/13/2009	DATE - 10/16/09	REVISED -

benesch

**STATE OF ILLINOIS
DEPARTMENT OF TRANSPORTATION**

**TRAFFIC SURVEILLANCE LOOP
WOODDALE RD INSTALLATION**

SCALE: N.T.S. SHEET NO. 4 OF 16 SHEETS STA. TO STA.

F.A.I. RTE.	SECTION	COUNTY	TOTAL SHEETS	SHEET NO.
•	220, 1-1, 2&3RS-7	DUPAGE	546	505
•290,355			CONTRACT NO. 60G51	
FED. ROAD DIST. NO.	ILLINOIS FED. AID PROJECT			