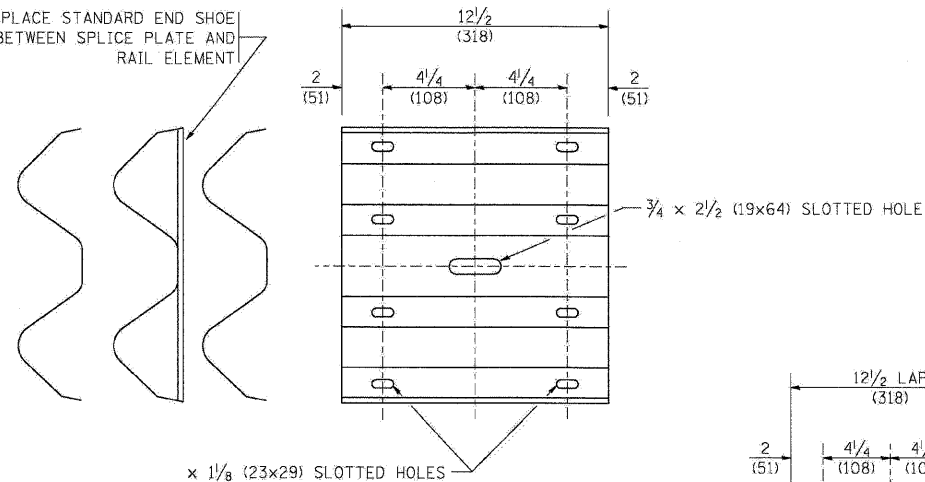
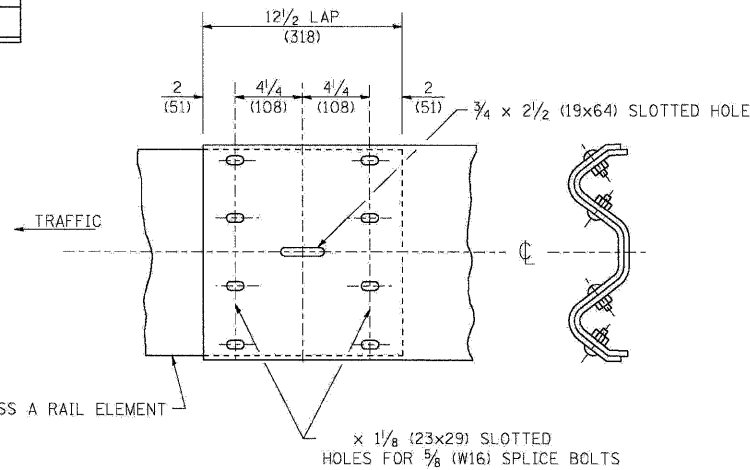


PLACE STANDARD END SHOE BETWEEN SPLICE PLATE AND RAIL ELEMENT



x 1 1/8 (23x29) SLOTTED HOLES

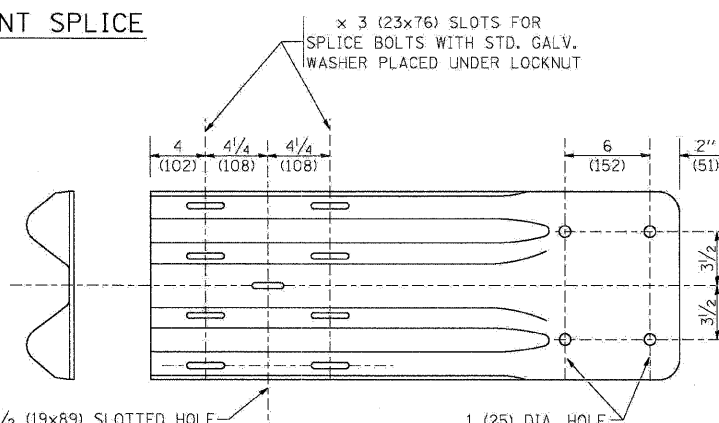
**SPLICE PLATE**



CLASS A RAIL ELEMENT

x 1 1/8 (23x29) SLOTTED HOLES FOR 5/8 (16) SPLICE BOLTS

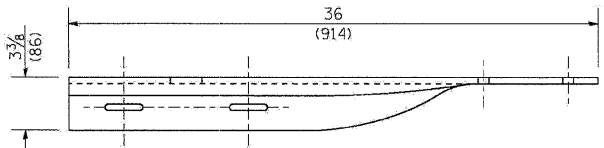
**RAIL ELEMENT SPLICE**



x 3 (23x76) SLOTS FOR SPLICE BOLTS WITH STD. GALV. WASHER PLACED UNDER LOCKNUT

3/4 x 3/2 (19x89) SLOTTED HOLE

1 (25) DIA. HOLE



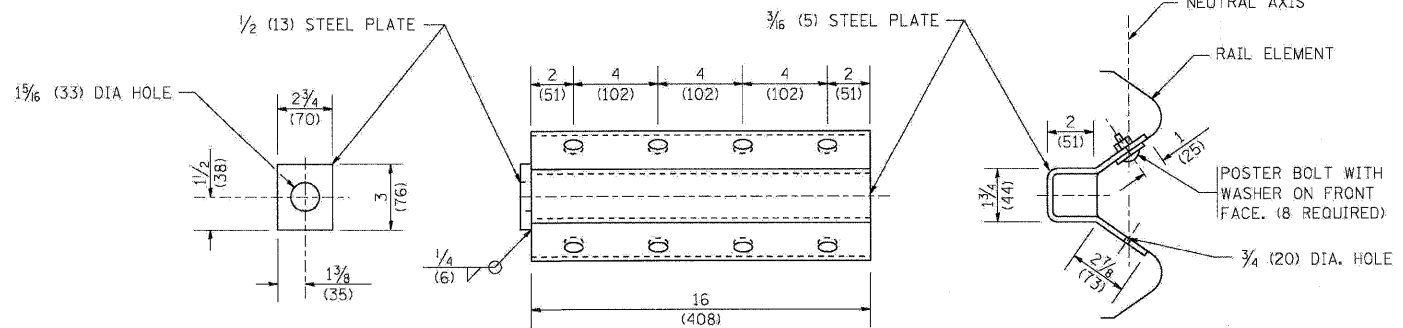
**END SHOE**

NOTE:

WHEN END SHOE IS ATTACHED TO A BRIDGE PARAPET WHICH HAS AN EXPANSION JOINT, THE BOLTS SHALL BE PROVIDED WITH A LOCKNUT OR DOUBLE NUT AND SHALL BE TIGHTENED ONLY TO A POINT THAT WILL ALLOW GUARDRAIL MOVEMENT.

THE STANDARD END SHOE SHALL BE ATTACHED TO THE CONCRETE WITH PRE-DRILLED OR SELF-DRILLING ANCHOR BOLTS. THE ANCHOR CONE SHALL BE SET FLUSH WITH THE SURFACE OF THE CONCRETE.

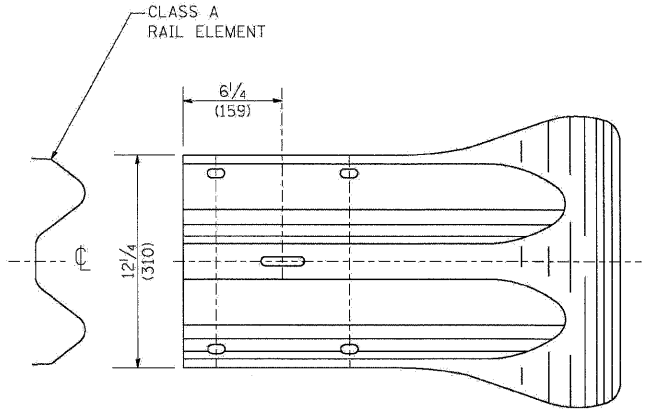
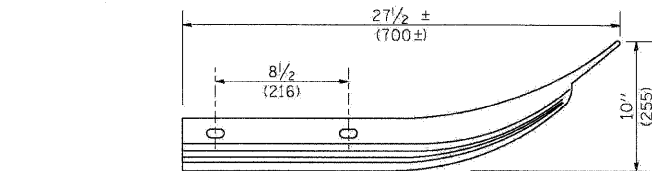
EXTERNALLY THREADED STUDS PROTRUDING FROM THE SURFACE OF THE CONCRETE WILL NOT BE PERMITTED.



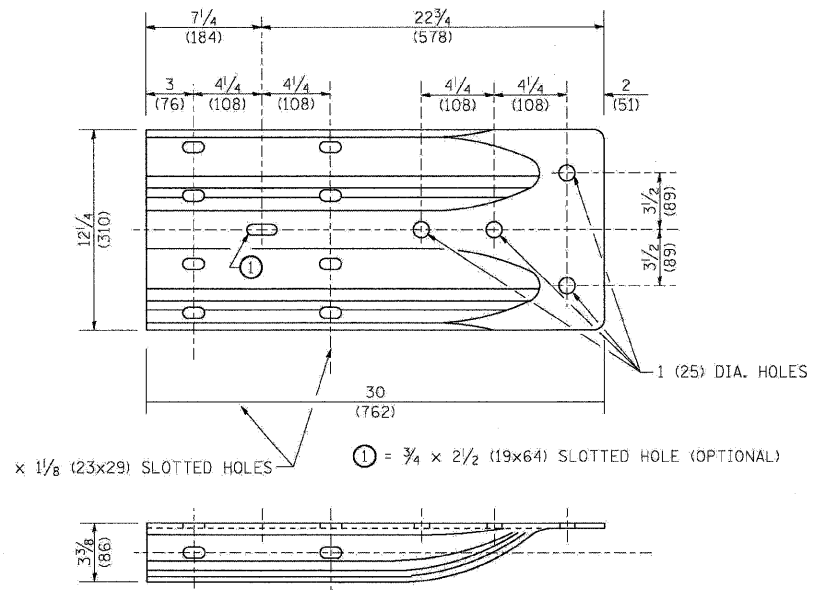
NOTE:

ANCHOR PLATE T SHALL BE USED TO ATTACH CABLE ASSEMBLY TO GUARDRAIL WHEN REQUIRED ON TRAFFIC BARRIER TERMINALS.

**ANCHORE PLATE T DETAILS**



**END SECTION**



x 1 1/8 (23x29) SLOTTED HOLES

⊙ = 3/4 x 2 1/2 (19x64) SLOTTED HOLE (OPTIONAL)

**ALTERNATE END SHOE**

FILE NAME =	DESIGNED - AJP	REVISED -
...Nppin.ABC.C1.D1.BM-21C.dgn	DRAWN - TMB	REVISED -
USER NAME = tblank	CHECKED - JMM	REVISED -
PLOT DATE = 11/13/2009	DATE - 10/16/09	REVISED -

**benesch**

**STATE OF ILLINOIS  
DEPARTMENT OF TRANSPORTATION**

**REMOVE AND REERECT GUARDRAIL**

SCALE: N.T.S. SHEET NO. 7 OF 15 SHEETS STA. TO STA.

F.A.I. RTE.	SECTION	COUNTY	TOTAL SHEETS	SHEET NO.
•	221, 1-1, 2&3RS-7	DUPAGE	546	538
•290,355			CONTRACT NO. 60G51	
FED. ROAD DIST. NO.	ILLINOIS	FED. AID PROJECT		

**BM-21**