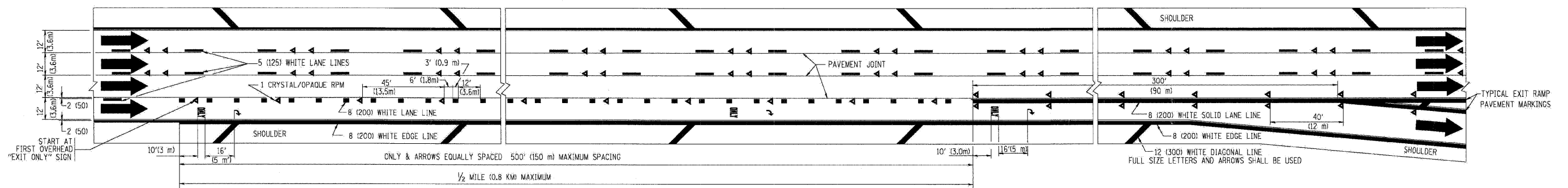
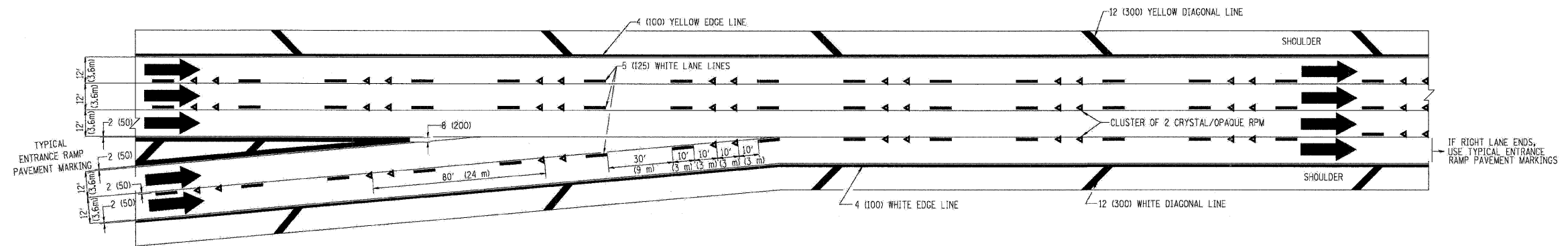


**TYPICAL ENTRANCE/EXIT RAMP COMBINATION PAVEMENT MARKINGS**



**TYPICAL EXIT ONLY LANE PAVEMENT MARKINGS**



**TYPICAL TWO LANE ENTRANCE RAMP PAVEMENT MARKINGS**

FILE NAME = ...Nprpln_08C.01.01.TC-12B.dgn	DESIGNED - AJP	REVISED -	<b>benesch</b>	<b>STATE OF ILLINOIS DEPARTMENT OF TRANSPORTATION</b>	<b>MULTI-LANE FREEWAY PAVEMENT MARKING</b>			F.A.I. RTE.	SECTION	COUNTY	TOTAL SHEETS	SHEET NO.
USER NAME = tblank	DRAWN - TMB	REVISED -			SCALE: N.T.S.	SHEET NO. 12 OF 15 SHEETS	STA.	TO STA.	22(1, 1-1, 2&3)RS-7	DUPAGE	546	543
PLOT DATE = 11/13/2009	CHECKED - JMM	REVISED -					FED. ROAD DIST. NO.	ILLINOIS FED. AID PROJECT			CONTRACT NO. 60G51	
	DATE - 10/16/09	REVISED -										