

FOR INDEX OF SHEETS, SEE SHEET NO. 2.

TRAFFIC DATA

ADT = 187,000 VEHICLES
POSTED SPEED LIMIT = 55 MPH

PROJECT LOCATED IN THE
VILLAGE OF OAK PARK,
VILLAGE OF FOREST PARK,
VILLAGE OF MAYWOOD,
VILLAGE OF BROADVIEW,
VILLAGE OF WESTCHESTER,
VILLAGE OF BELLWOOD
AND VILLAGE OF HILLSIDE

STRUCTURE LOCATIONS

I-290 EB OVER I-88
SN 016-0085

I-290 C-D RAMP OVER HILLSIDE DR
SN 016-2759

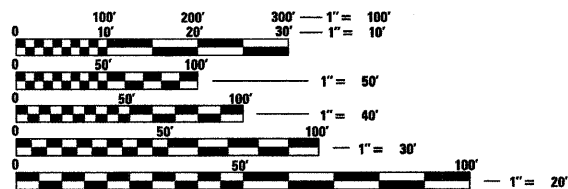
I-290 C-D RAMP OVER WOLF RD
SN 016-2758

I-290 OVER WOLF RD
SN 016-0086

I-290 OVER HILLSIDE DR
SN 016-0986

I-290 OVER ADDISON CREEK
SN 016-0088

I-290 OVER DES PLAINES RIVER
SN 016-0090



FULL SIZE PLANS HAVE BEEN PREPARED USING STANDARD ENGINEERING SCALES. REDUCED SIZED PLANS WILL NOT CONFORM TO STANDARD SCALES. IN MAKING MEASUREMENTS ON REDUCED PLANS, THE ABOVE SCALES MAY BE USED.

J.U.L.I.E.
JOINT UTILITY LOCATION INFORMATION FOR EXCAVATION
1-800-892-0123
OR 811

PROJECT ENGINEER: CRAIG BAUER (847) 705-4265
PROJECT MANAGER: LONG TRAN (847) 705-4232

CONTRACT NO. 60G52

STATE OF ILLINOIS
DEPARTMENT OF TRANSPORTATION
DIVISION OF HIGHWAYS

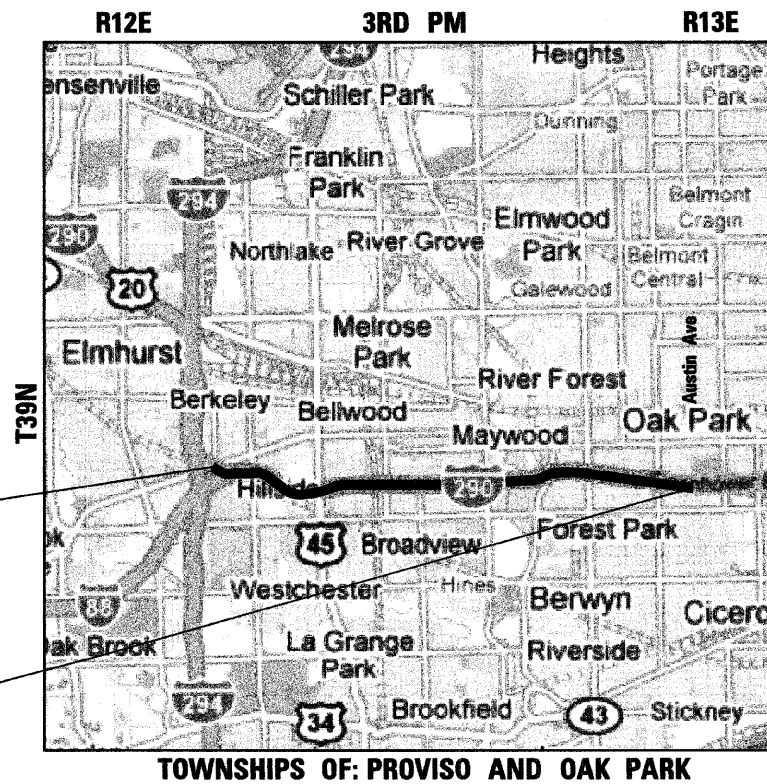
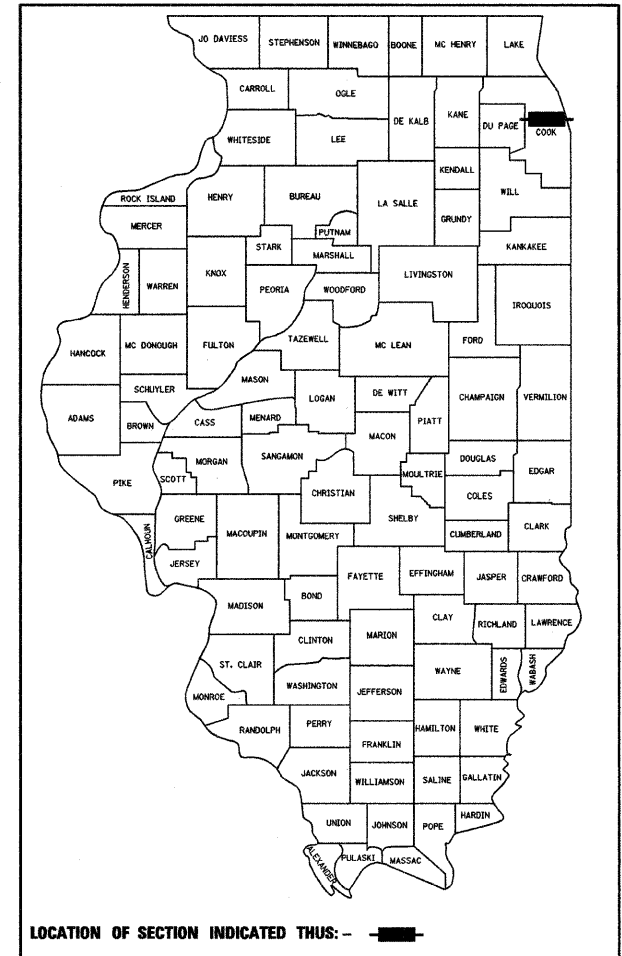
**PROPOSED
HIGHWAY PLANS**
FAI-290 (EISENHOWER EXPRESSWAY)
SECTION (3031.1, ETC., 3838)RS-5
PROJECT: ACIM-290-4(114)084
I-88 TO AUSTIN AVE.
RESURFACING AND ROADWAY AND STRUCTURE REPAIRS
COOK COUNTY
C-91-493-09

NOTE: WHEREVER IN THESE PLANS
REFERENCE IS MADE TO "TOTAL
SHEETS-298 IT SHALL MEAN 413.

F.A.I. RTE.	SECTION	COUNTY	TOTAL SHEETS	SHEET NO.
290	(3031.1, ETC., 3838)RS-5	COOK	1	1
FED. ROAD DIST. NO.	ILLINOIS	CONTRACT NO. 60G52		

* 413 + 5 = 418

D-91-341-09



PROJECT BEGINS
STA. 488 + 85 (WB)
STA. 490 + 85 (EB)

PROJECT ENDS
STA. 872 + 00



EXPIRATION DATE 11-30-09
DATE 10/2/09

STATE OF ILLINOIS
DEPARTMENT OF TRANSPORTATION
DIVISION OF HIGHWAYS

SUBMITTED October 7, 2009
Diana M. D'Korja
DEPUTY DIRECTOR OF HIGHWAYS, REGION ENGINEER

December 4, 2009
Charles G. Ingersoll
ENGINEER OF DESIGN AND ENVIRONMENT

December 4, 2009
Christina M. Reed
DIRECTOR OF HIGHWAYS, CHIEF ENGINEER

PRINTED BY THE AUTHORITY
OF THE STATE OF ILLINOIS

benesch
alfred benesch & company
Engineers • Surveyors • Planners
205 North Michigan Avenue, Suite 2400
Chicago, Illinois 60601
312-565-0450

Rev.