




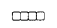

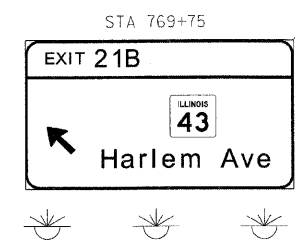
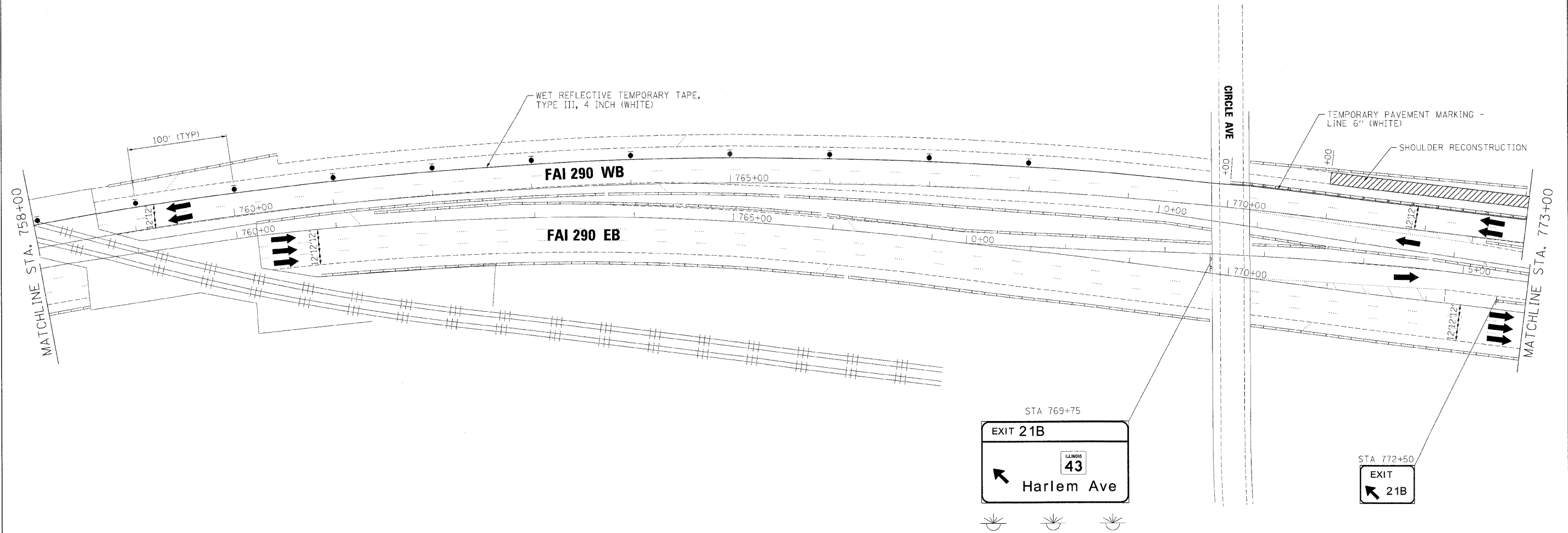
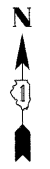


LEGEND:

-  TEMPORARY SIGN PANELS
-  WORK ZONE
-  TRAFFIC ARROW
-  FLASHING ARROW BOARD
-  TYPE II BARRICADES, DRUMS, OR VERTICAL PANEL W/ STEADY BURNING MONODIRECTIONAL LIGHT
-  TEMPORARY IMPACT ATTENUATORS
-  TEMPORARY CONCRETE BARRIER PLACEMENT OR RELOCATION



FILE NAME *	DESIGNED - AJP	REVISED -
...prptn,ABC,C2,290 mot.ST.1.25.cgn	DRAWN - TMB	REVISED -
USER NAME = tblank	CHECKED - JJT	REVISED -
PLOT DATE = 11/13/2009	DATE - 10/16/09	REVISED -

benesch

**STATE OF ILLINOIS
DEPARTMENT OF TRANSPORTATION**

**MAINTENANCE OF TRAFFIC
PLAN - STAGE 1**

SCALE: 1"=50' SHEET NO. 33 OF 96 SHEETS STA. TO STA.

F.A.I. RTE.	SECTION	COUNTY	TOTAL SHEETS	SHEET NO.
290	(3031L, ETC., 383B)RS-5	COOK	298	127
FED. ROAD DIST. NO. [ILLINOIS] FED. AID PROJECT			CONTRACT NO. 60G52	