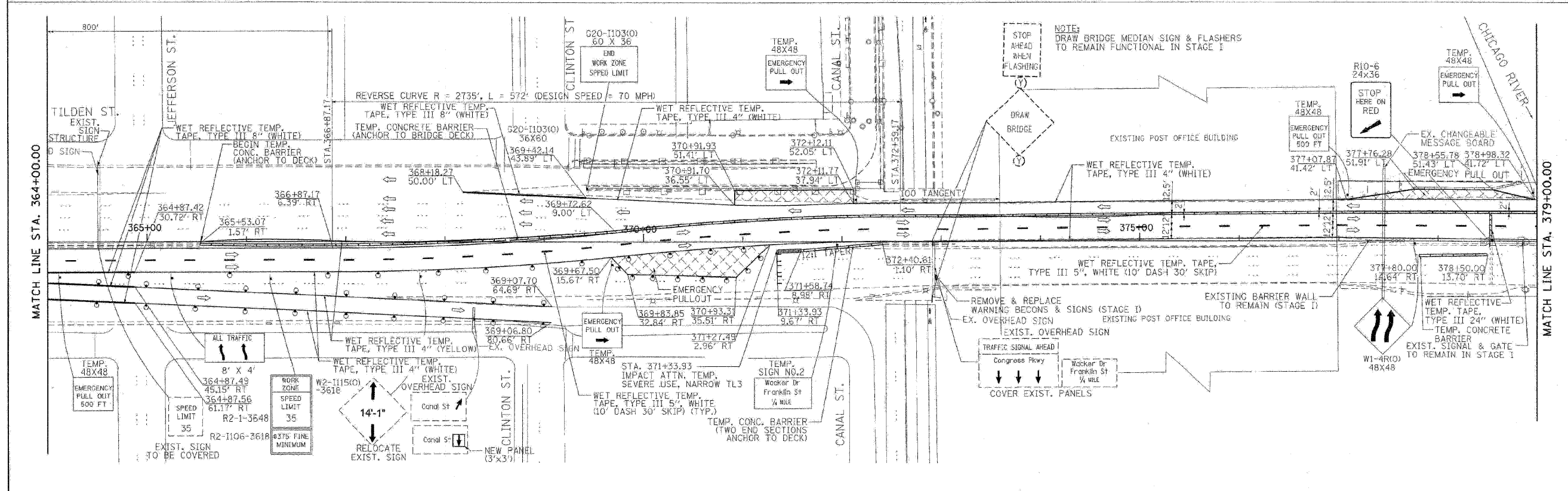
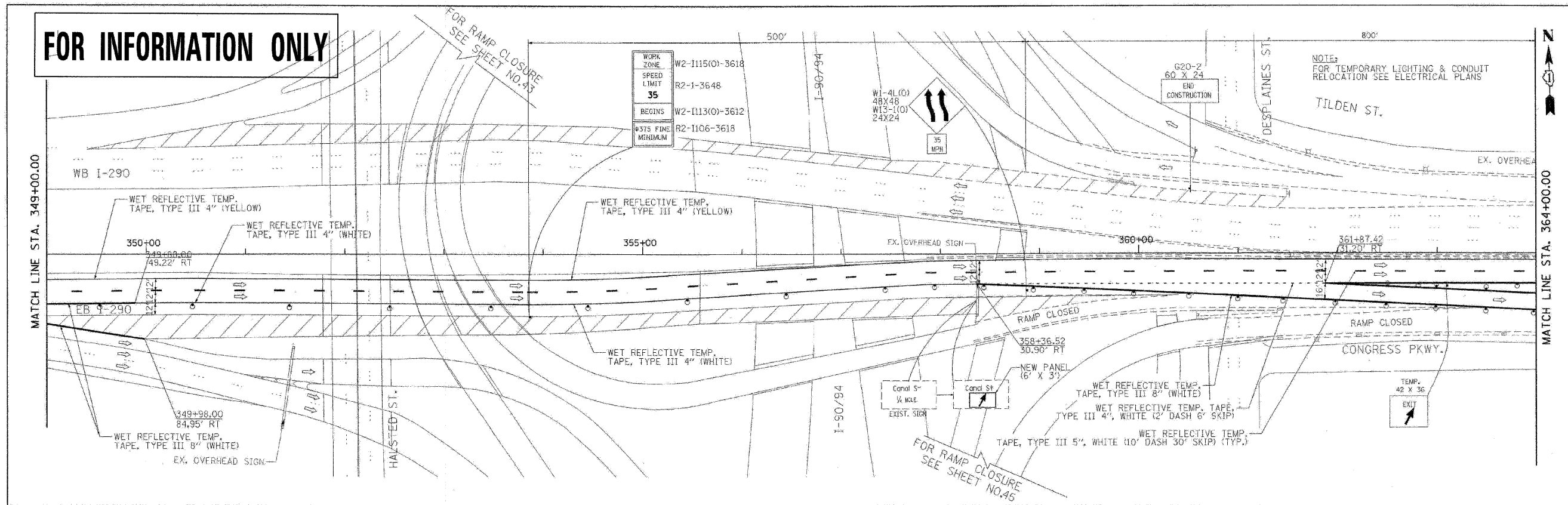


FOR INFORMATION ONLY



PB Americas, Inc. 230 WEST MONROE STREET, SUITE 900 CHICAGO, IL 60606	USER NAME = #USER#	DESIGNED - DM	REVISED -	STATE OF ILLINOIS DEPARTMENT OF TRANSPORTATION	CONGRESS PARKWAY OVER SOUTH BRANCH OF THE CHICAGO RIVER SUGGESTED STAGES OF CONSTRUCTION AND TRAFFIC CONTROL PLANS - STAGE I	F.A.P. RTE. 389	SECTION 2424-2B-R	COUNTY COOK	TOTAL SHEETS 398	SHEET NO. 35
	FILE NAME = #FILENAME#	DRAWN - MS	REVISED -			SHEET NO. 35 OF 83 SHEETS	STA. 377+01.00 TO STA. 382+45.28	FED. ROAD DIST. NO. 1 ILLINOIS FED. AID PROJECT		
	PLOT SCALE = #SCALE#	CHECKED - DS	REVISED -	STATE OF ILLINOIS DEPARTMENT OF TRANSPORTATION	MAINTENANCE OF TRAFFIC PLAN - STAGE 2	F.A.I. RTE. 290	SECTION (2828B,D, ETC., 3031.DRS-6	COUNTY COOK	TOTAL SHEETS 185	SHEET NO. 21
	PLOT DATE = #DATE#	DATE - 5/08/09	REVISED -			SHEET NO. 21 OF 28 SHEETS	STA. TO STA.	FED. ROAD DIST. NO. ILLINOIS FED. AID PROJECT		

FILE NAME = ...p\p\in.ABC.C3.290.met.ST.2.05.68061.dgn	DESIGNED - AJP	REVISED -
USER NAME = tblank	DRAWN - TMB	REVISED -
PLOT DATE = 11/13/2009	CHECKED - JJT	REVISED -
	DATE - 10/16/09	REVISED -

benesch

STATE OF ILLINOIS
DEPARTMENT OF TRANSPORTATION

F.A.I. RTE. 290	SECTION (2828B,D, ETC., 3031.DRS-6	COUNTY COOK	TOTAL SHEETS 185	SHEET NO. 21
FED. ROAD DIST. NO. ILLINOIS FED. AID PROJECT				