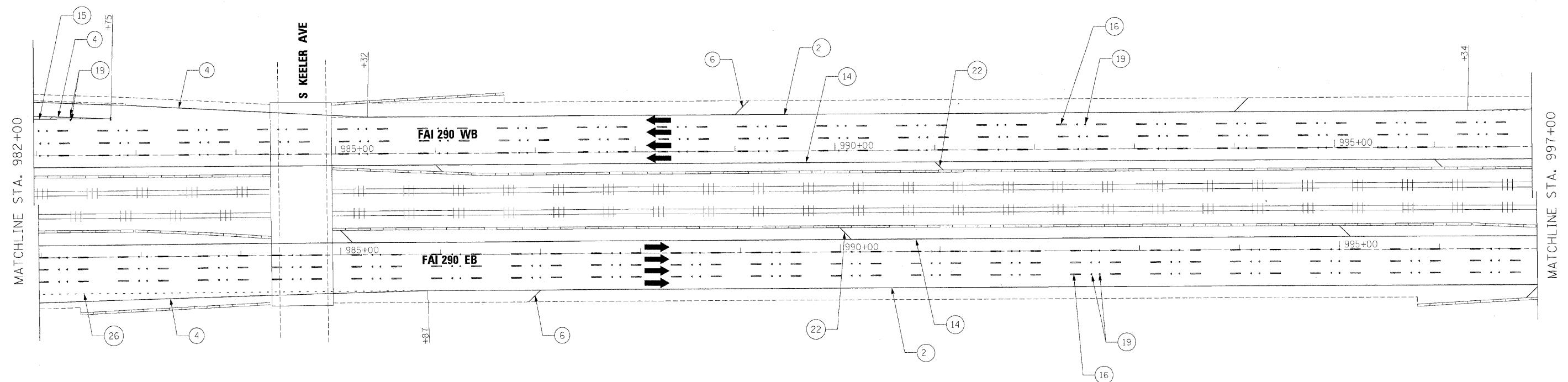
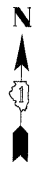


NOTE:

1. SEE IDOT DISTRICT 1 STANDARD TC-12 "MULTI-LANE FREEWAY PAVEMENT MARKING DETAILS" FOR PLACEMENT AND TYPE OF RAISED REFLECTIVE PAVEMENT MARKERS.
2. FOR PROPOSED PAVEMENT MARKINGS IN THE PCC SECTIONS, USE POLYUREA PAVEMENT MARKINGS ACCORDING TO STANDARD TC-12.
3. SEE ROADWAY PLANS FOR LIMITS OF RESURFACING.



LEGEND

- | | | |
|---|--|---|
| ① THERMOPLASTIC PAVEMENT MARKING - LETTERS AND SYMBOLS (WHITE) | ⑪ PREFORMED PLASTIC PAVEMENT MARKING, TYPE B, INLAID, LINE 8" (WHITE 3' DASH, 9' SKIP) | ⑲ RAISED REFLECTIVE PAVEMENT MARKER (1-WAY CRYSTAL / OPAQUE) |
| ② THERMOPLASTIC PAVEMENT MARKING - LINE 4" (WHITE EDGE LINE) | ⑫ PREFORMED PLASTIC PAVEMENT MARKING, TYPE B, INLAID, LINE 5" (WHITE 10' DASH, 30' SKIP) | ⑳ THERMOPLASTIC PAVEMENT MARKING - LINE 12" (WHITE EDGE LINE) |
| ③ THERMOPLASTIC PAVEMENT MARKING - LINE 4" (YELLOW EDGE LINE) | ⑬ POLYUREA PAVEMENT MARKING TYPE 1, LINE 4" (WHITE EDGE LINE) | ㉑ THERMOPLASTIC PAVEMENT MARKING - LINE 6" (WHITE THRU LANE LINE) |
| ④ THERMOPLASTIC PAVEMENT MARKING - LINE 8" (WHITE EDGE LINE) | ⑭ POLYUREA PAVEMENT MARKING TYPE 1, LINE 4" (YELLOW EDGE LINE) | ㉒ POLYUREA PAVEMENT MARKING TYPE 1, LINE 12" (YELLOW DIAGONALS SPACED @ 500' CENTERS ON M.L. AND 40' CENTERS ON STRUCTURES) |
| ⑤ THERMOPLASTIC PAVEMENT MARKING - LINE 8" (WHITE DIAGONALS SPACED @ 10' CENTERS) | ⑮ POLYUREA PAVEMENT MARKING TYPE 1, LINE 8" (WHITE EDGE LINE) | ㉓ POLYUREA PAVEMENT MARKING TYPE 1, LINE 12" (WHITE DIAGONALS SPACED @ 500' CENTERS ON M.L. AND 40' CENTERS ON STRUCTURES) |
| ⑥ THERMOPLASTIC PAVEMENT MARKING - LINE 12" (WHITE DIAGONALS SPACED @ 500' CENTERS ON M.L. AND 150' CENTERS ON RAMP) | ⑯ POLYUREA PAVEMENT MARKING TYPE 1, LINE 5" (WHITE 10' DASH, 30' SKIP) | ㉔ POLYUREA PAVEMENT MARKING TYPE 1, LETTERS AND SYMBOLS (WHITE) |
| ⑦ THERMOPLASTIC PAVEMENT MARKING - LINE 12" (YELLOW DIAGONALS SPACED @ 500' CENTERS ON M.L. AND 150' CENTERS ON RAMP) | ⑰ POLYUREA PAVEMENT MARKING TYPE 1, LINE 12" (WHITE GORE DIAGONALS SPACED @ 30' CENTERS) | ㉕ POLYUREA PAVEMENT MARKING TYPE 1, LINE 8" (WHITE 3' DASH, 9' SKIP) |
| ⑧ THERMOPLASTIC PAVEMENT MARKING - LINE 12" (WHITE GORE DIAGONALS SPACED @ 30' CENTERS) | ⑱ RAISED REFLECTIVE PAVEMENT MARKER (1-WAY YELLOW / OPAQUE) | ㉖ POLYUREA PAVEMENT MARKING TYPE 1, LINE 4" (WHITE 2' DASH, 6' SKIP) |
| ⑨ THERMOPLASTIC PAVEMENT MARKING - LINE 24" (WHITE) | ⑳ THERMOPLASTIC PAVEMENT MARKING - LINE 12" (WHITE EDGE LINE) | |
| ⑩ PREFORMED PLASTIC PAVEMENT MARKING, TYPE B, INLAID, LINE 4" (WHITE 2' DASH, 6' SKIP) | | |

FILE NAME =	DESIGNED - CAG	REVISED -
...\\pl\pln\ABC_CS_290_pvm\mkg_09.dgn	DRAWN - DMS	REVISED -
USER NAME = tblank	CHECKED - CAR	REVISED -
PLOT DATE = 12/16/2009	DATE - 10/16/09	REVISED -

benesch

**STATE OF ILLINOIS
DEPARTMENT OF TRANSPORTATION**

**PAVEMENT MARKING PLANS
STA 982+00 TO STA 997+00**

SCALE: 1"=50' SHEET NO. 9 OF 24 SHEETS STA. TO STA.

F.A.I. RTE.	SECTION	COUNTY	TOTAL SHEETS	SHEET NO.
290	(2828B,D, ETC., 3031.IRS-6	COOK	185	109
FED. ROAD DIST. NO.		ILLINOIS FED. AID PROJECT		
		CONTRACT NO. 60G53		