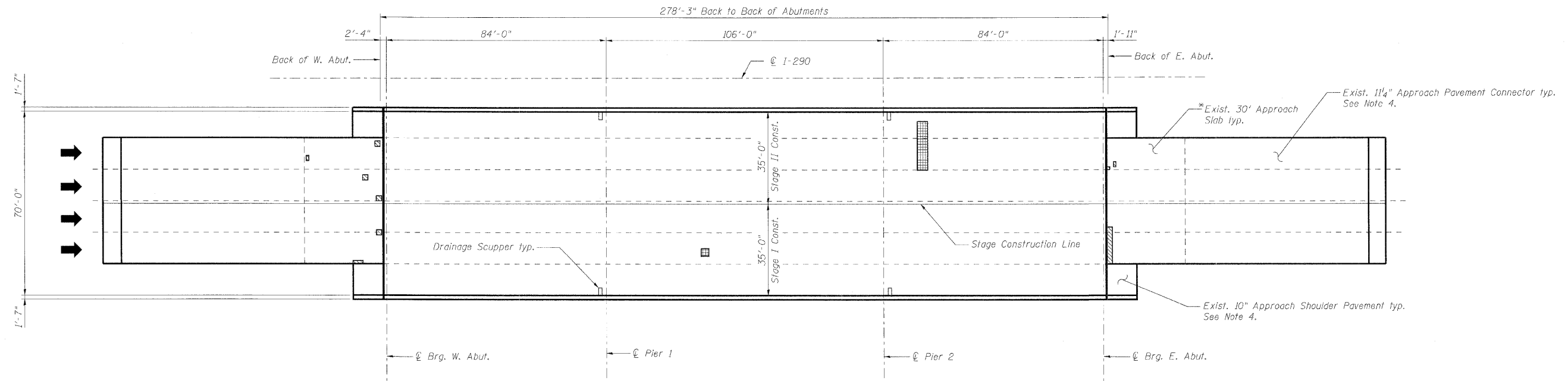


STATE OF ILLINOIS
DEPARTMENT OF TRANSPORTATION



* See Section B-B on Expansion Joint Details sheet for the location of the start of the 30' Approach Slab.

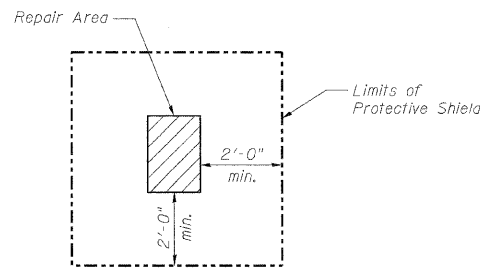


PLAN

BILL OF MATERIAL

SYMBOL	ITEM	UNIT	QUANTITY
	Deck Slab Repair (Partial)	Sq. Yd.	5:0**
	Deck Slab Repair (Full Depth - Type I)	Sq. Yd.	5:0**
	Deck Slab Repair (Full Depth - Type II)	Sq. Yd.	5:0**
	Cleaning & Painting Exposed Rebar (Special)	Sq. Ft.	125
	Approach Slab Repair (Partial Depth)	Sq. Yd.	12.1
	Protective Shield	Sq. Yd.	10

** The quantity shown is provided as a contingency in the event the Resident Engineer determines that deck slab repair is required.



PROTECTIVE SHIELD DETAIL

Notes:

- Deck and approach slab repair areas are estimated based on visual inspection completed in June 2009. Actual repair areas and locations shall be determined by the Engineer and shown on As-Built plans.
- Protective Shield required for deck slab and/or parapet repairs shall be installed according to Article 501.03 of the Standard Specifications. For limits of Protective Shield, see Protective Shield Detail on this sheet and Elevation on General Plan and Elevation sheet.
- Deck drains (downspouts, floor drains and scuppers) shall be cleaned with the bridge deck prior to application of the Concrete Sealer. Cost of cleaning the deck drains is included with concrete sealer.
- The Engineer shall determine the type and quantity of Class A patching and the quantity of Mixture for Cracks, Joints and Flangeways. Estimated quantities are included in the overall Summary of Quantities in Roadway Plans.

BRIDGE DECK
AND APPROACH SLAB REPAIRS
STRUCTURE NO. 016-0094

DESIGNED -	MFB
CHECKED -	KWS
DRAWN -	RMG
CHECKED -	KWS

benesch

alfred benesch & company
Engineers - Surveyors - Planners
205 North Michigan Avenue, Suite 2400
Chicago, Illinois 60601
312-565-0450 Job No. 10050

SHEET NO. 4 8 SHEETS	F.A.I. RTE.	SECTION	COUNTY	TOTAL SHEETS	SHEET NO.
	290	(2828 B,D, ETC., 3031.1)RS-6	COOK	185	128
			CONTRACT NO. 60G53		
FED. ROAD DIST. NO.		ILLINOIS	FED. AID PROJECT		