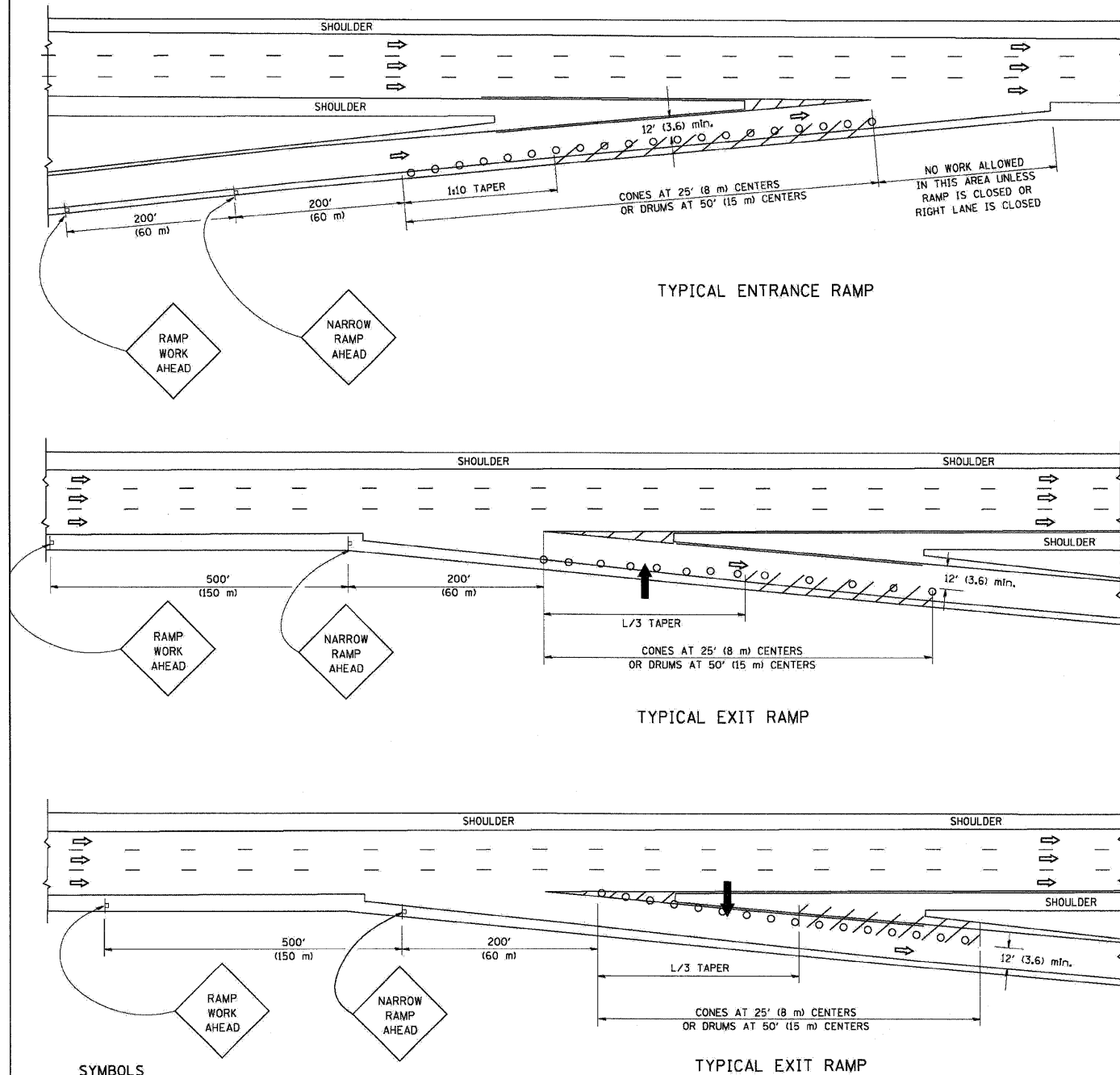


PARTIAL RAMP CLOSURE DETAILS



SYMBOLS

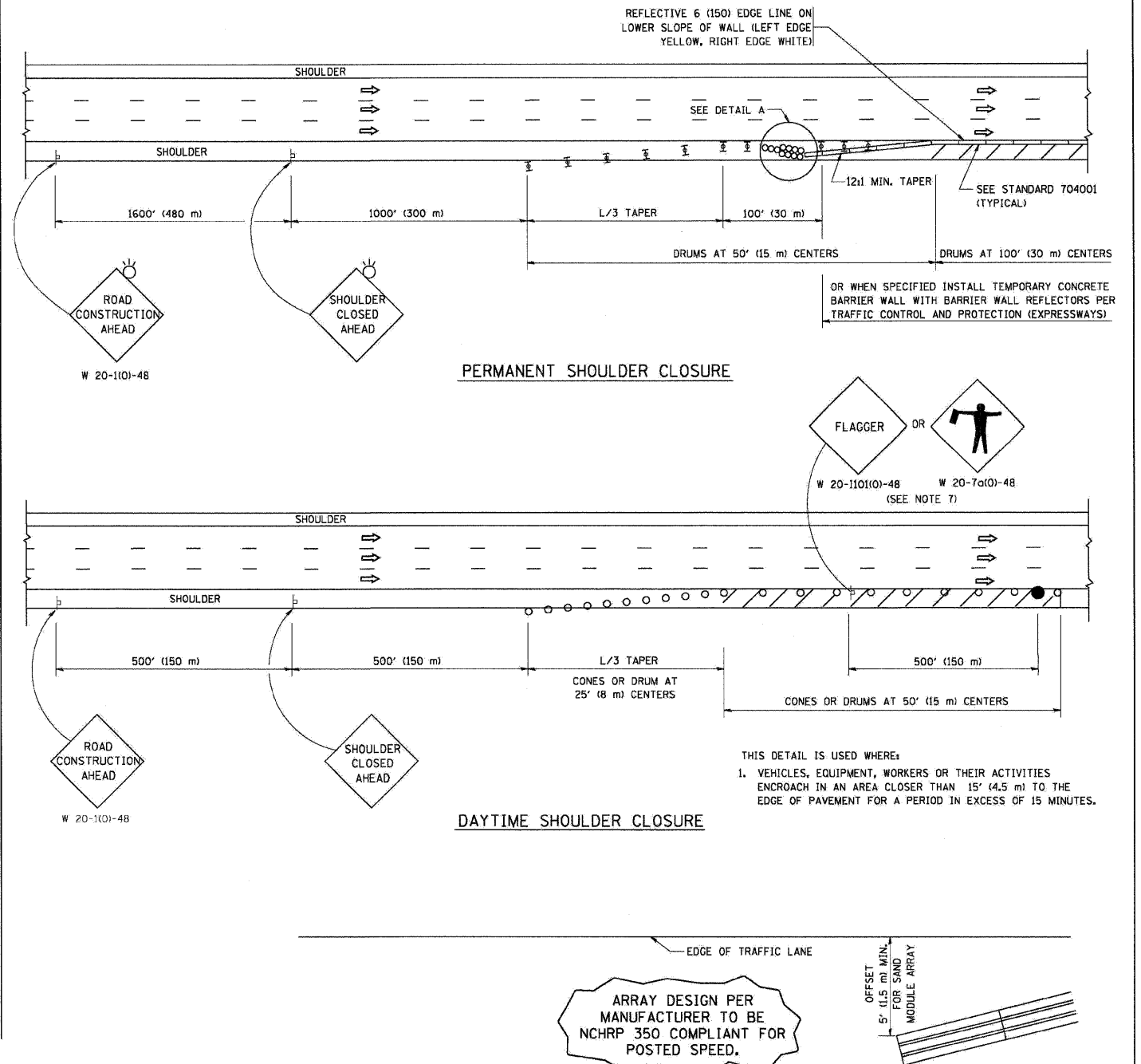
- ARROWBOARD
- WORK AREA
- SIGN ON PORTABLE OR PERMANENT SUPPORT
- FLAGGER WITH CONTROL SIGN
- TYPE II BARRICADE, DRUM OR VERTICAL BARRICADE WITH STEADY BURN MONO-DIRECTIONAL LIGHT
- CONE, DRUM OR BARRICADE

GENERAL NOTES

1. THE "L" DISTANCE EQUALS:  

|                              |  |
|------------------------------|--|
| SPEED LIMIT                  | FORMULAS                                   |
| 45 mph (80 km/h) OR GREATER: | METRIC: $L=0.65(W)(S)$ ENGLISH: $L=(W)(S)$ |
|                              | W = WIDTH OF OFFSET IN FEET (METERS)       |
|                              | S = NORMAL POSTED SPEED MPH (KM/H)         |
2. PLASTIC DRUMS WITH HIGH PERFORMANCE REFLECTIVE SHEETING AND STEADY BURNING LIGHTS ARE REQUIRED FOR ALL NIGHTTIME CLOSURES.
3. ALL SIGNS SHALL BE POST MOUNTED IF THE CLOSURE TIME EXCEEDS FOUR DAYS.
4. FLASHING LIGHTS SHALL BE USED DURING THE HOURS OF DARKNESS AND SHALL BE INSTALLED ABOVE THE FIRST TWO SETS OF SIGNS.

SHOULDER CLOSURE DETAILS



ARRAY DESIGN PER MANUFACTURER TO BE NCHRP 350 COMPLIANT FOR POSTED SPEED.

DETAIL "A"  
IMPACT ATTENUATOR, TEMPORARY  
(SEE NOTE 5)

ALL DIMENSIONS ARE IN INCHES (MILLIMETERS) UNLESS OTHERWISE SHOWN.

TC-17

|                              |                 |           |
|------------------------------|-----------------|-----------|
| FILE NAME =                  | DESIGNED - AJP  | REVISED - |
| ...prpln-ABC_C3.D1.TC-17.dgn | DRAWN - TMB     | REVISED - |
| USER NAME = wbank            | CHECKED - JMM   | REVISED - |
| PLOT DATE = 11/12/2009       | DATE - 10/16/09 | REVISED - |

**benesch**

STATE OF ILLINOIS  
DEPARTMENT OF TRANSPORTATION

TRAFFIC CLOSURE FOR SHOULDER CLOSURES  
AND PARTIAL RAMP CLOSURES

SCALE: N.T.S. SHEET NO. 13 OF 15 SHEETS STA. TO STA.

|   |                             |        |                    |           |
|---|-----------------------------|--------|--------------------|-----------|
| F.A.I. RTE.                                     | SECTION                     | COUNTY | TOTAL SHEETS       | SHEET NO. |
| 290   | (2828B,D, ETC., 3031,1RS-6) | COOK   | 185                | 183       |
| FED. ROAD DIST. NO. [ILLINOIS] FED. AID PROJECT |                             |        | CONTRACT NO. 60G53 |           |