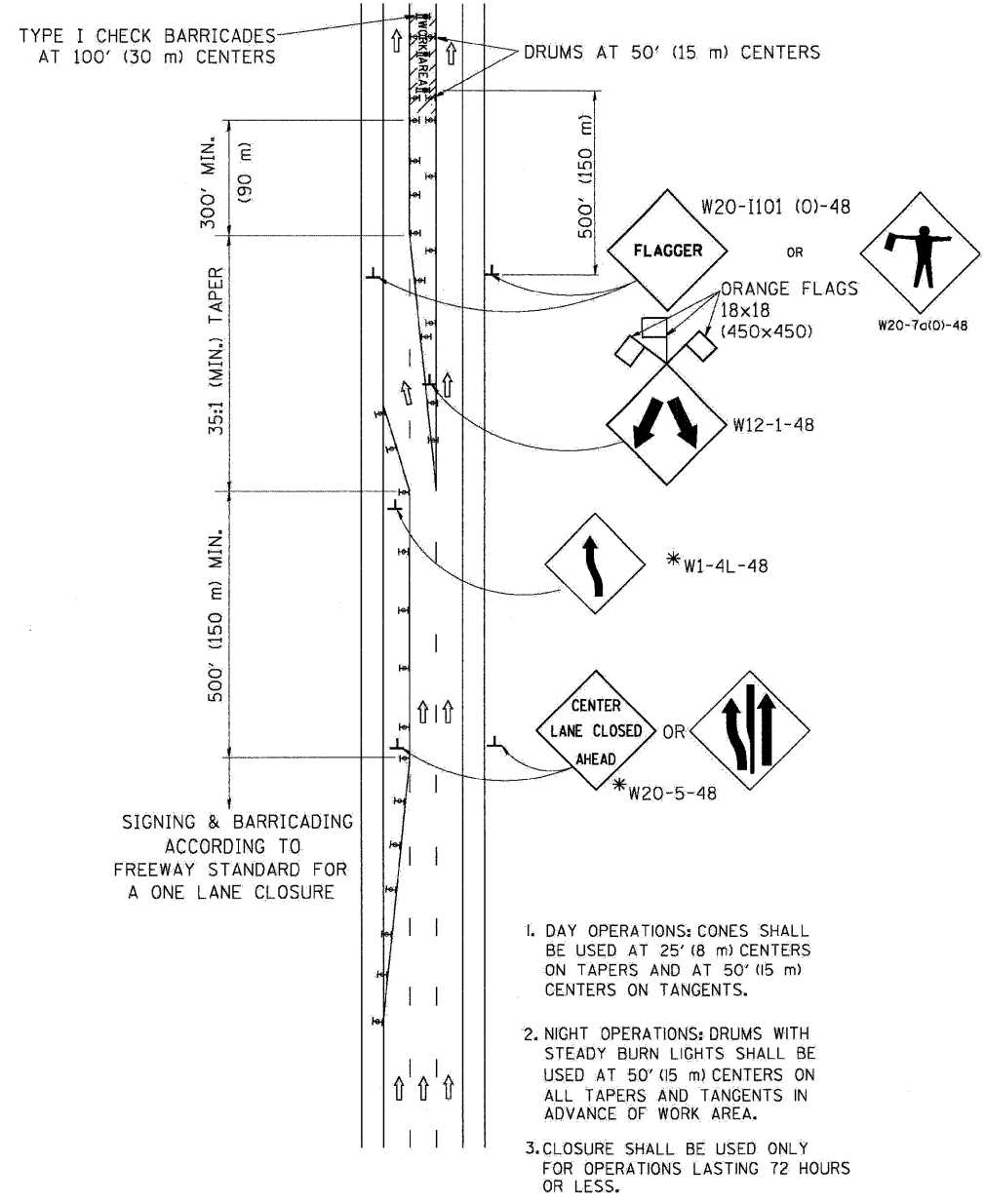
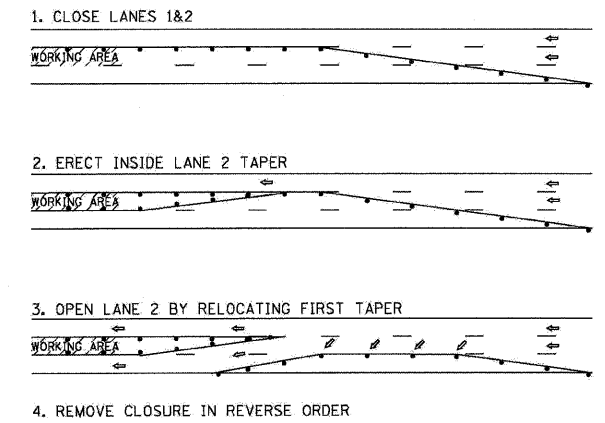


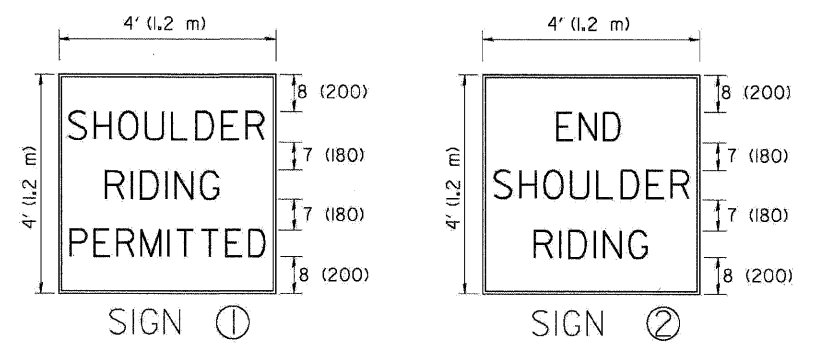
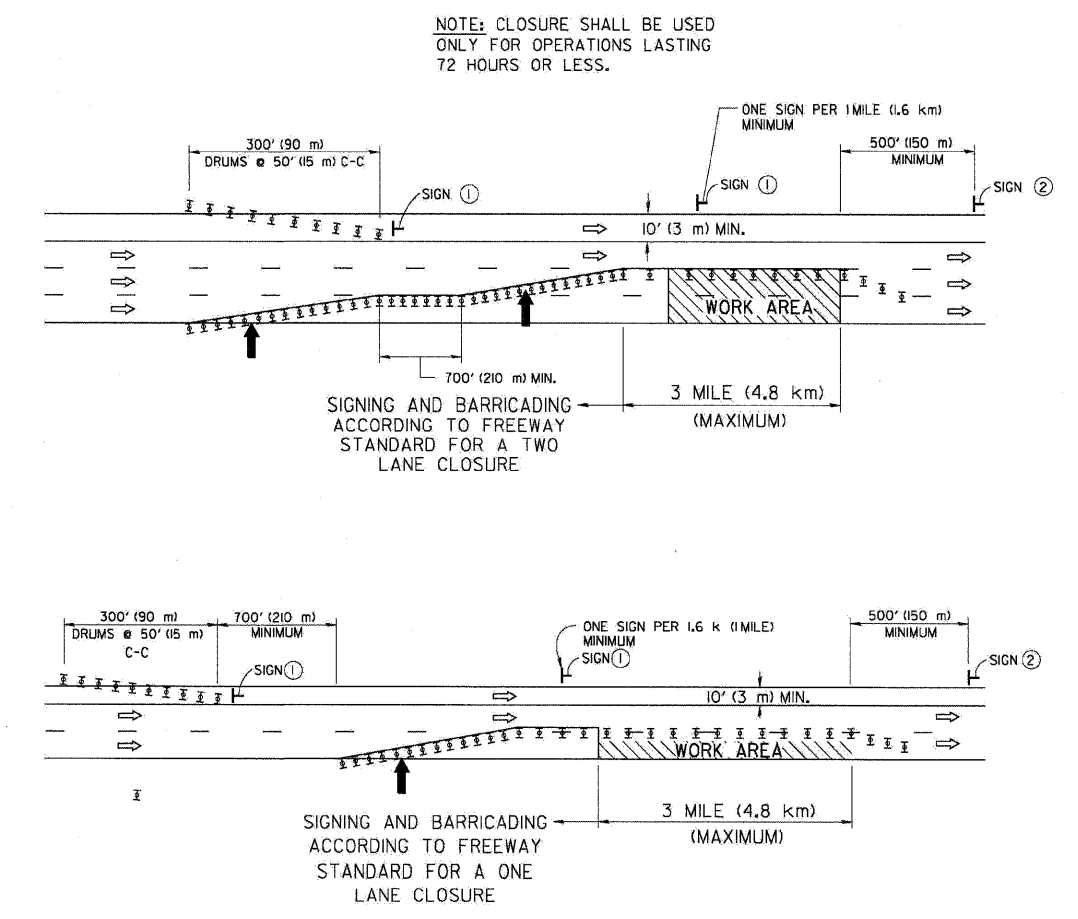
CENTER LANE CLOSURE



INSTALLATION SEQUENCE



SHOULDER LANE



- SYMBOLS**
- ↑ DIRECTION OF TRAFFIC
 - ➔ ARROWBOARD
 - ▨ WORK AREA
 - ◇ SIGN WITH 18x18 (450x450) ORANGE FLAGS ATTACHED *
 - ┌ SIGN ON PORTABLE OR PERMANENT SUPPORT *
 - ⊥ TYPE II BARRICADE, DRUM OR VERTICAL BARRICADE WITH MONO-DIRECTIONAL STEADY BURN LIGHT

TC-25

ALL DIMENSIONS ARE IN INCHES (MILLIMETERS) UNLESS OTHERWISE SHOWN

* ALL SIGNS SHALL BE MOUNTED AT A MINIMUM HEIGHT OF 5' (1.5 m).

FILE NAME =	DESIGNED - AJP	REVISED -
...p\proj\ABC_C3_D1_TC-25.dgn	DRAWN - TMB	REVISED -
USER NAME = jmajewski	CHECKED - JMM	REVISED -
PLOT DATE = 12/16/2009	DATE - 10/16/09	REVISED -

benesch

**STATE OF ILLINOIS
DEPARTMENT OF TRANSPORTATION**

**TRAFFIC CONTROL DETAILS FOR FREEWAY
CENTER LANE CLOSURE SHOULDER LANE**

F.A.I. RTE.	SECTION	COUNTY	TOTAL SHEETS	SHEET NO.
290	(2828B,D, ETC., 3031, IRS-6	COOK	300	299
FED. ROAD DIST. NO.			ILLINOIS FED. AID PROJECT	
			CONTRACT NO. 60653	

SCALE: N.T.S. SHEET NO. 7 OF 8 SHEETS STA. TO STA.