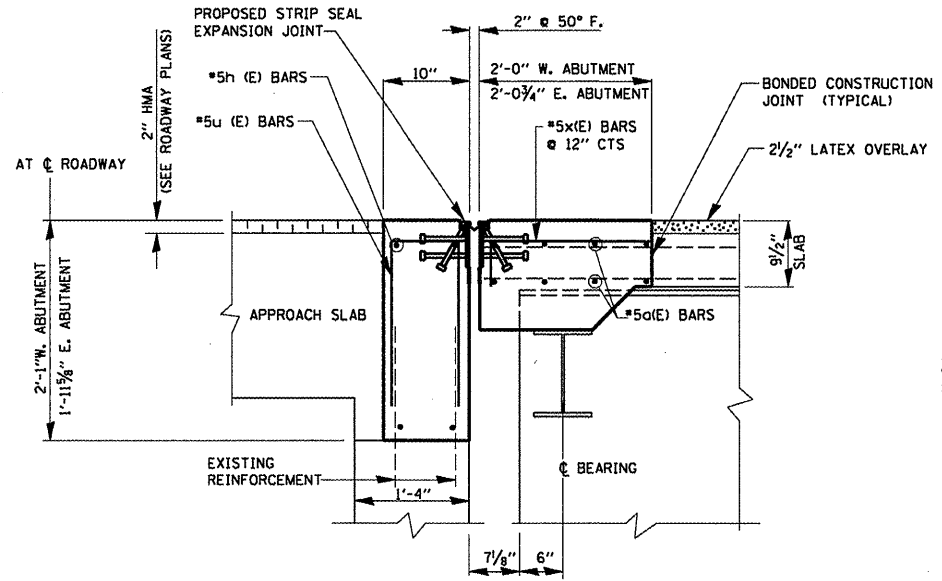


**SECTION A-A
(EXISTING)**



**SECTION A-A
(PROPOSED)**

BILL OF MATERIALS

BAR	NO.	SIZE	LENGTH	SHARE
a(E)	36	#5	27'-1"	---
a2(E)	12	#6	4'-0"	---
c(E)	12	#4	5'-5"	L
d(E)	12	#4	3'-4"	L
d1(E)	12	#4	2'-11"	L
h(E)	16	#5	27'-1"	---
u(E)	96	#5	2'-1"	□
x(E)	90	#5	2'-7"	┌
REINFORCEMENT BARS (EPOXY COATED)		POUND	2100	
CONCRETE REMOVAL		CU.YD.	15.8	
CONCRETE SUPERSTRUCTURE		CU.YD.	17.4	

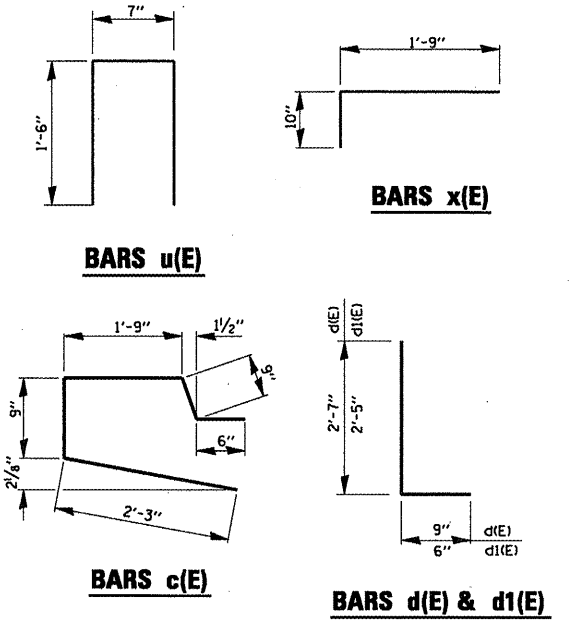
NOTE:
BARS INDICATED THUS 4x2 #5c(E) etc INDICATES 4 LINES OF BARS WITH 2 LENGTHS PER LINE

MINIMUM BAR LAP

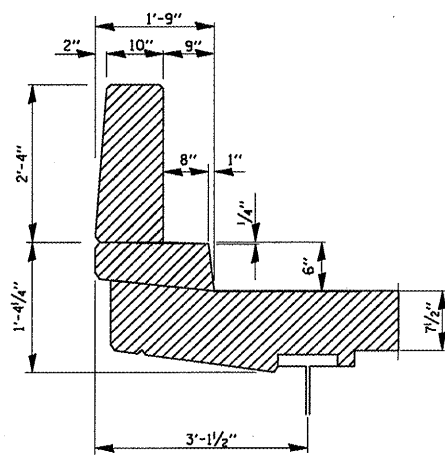
SIZE	LAP
#4	1'-8"
#5	2'-2"

LEGEND:

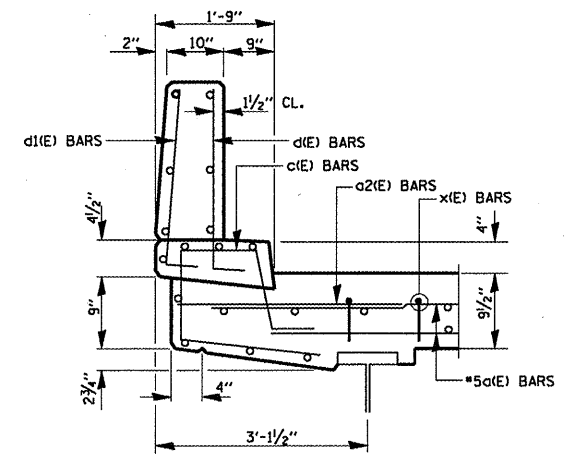
HATCHED AREA INDICATES CONCRETE REMOVAL



**EXPANSION JOINT PLAN
AT EAST AND WEST ABUTMENT**



**SECTION B-B
(EXISTING)**



**SECTION B-B
(PROPOSED)**

**STATE OF ILLINOIS
DEPARTMENT OF TRANSPORTATION**

**IL 19 (IRVING PARK ROAD) OVER EJ & E RR
TRANSVERSE EXPANSION JOINT DETAILS
S.N. 016-0948**

F.A.U. RTE.	SECTION	COUNTY	TOTAL SHEETS	SHEET NO.
1321	0303 VB-1	COOK	21	8

CONTRACT NO. 60H80
ILLINOIS FED. AID PROJECT

FILE NAME	USER NAME	DESIGNED	REVISED
ct:\pwork\p\WIDOT\TINIKOSM\11010167\11010167.dgn	tsnikosmv	RTB	-
		DRAWN	MVT
		CHECKED	MVT
		DATE	11/4/09
		REVISED	-
		REVISED	-
		REVISED	-

PLOT SCALE = 100.0000 ' / IN.
PLOT DATE = 11/4/2009