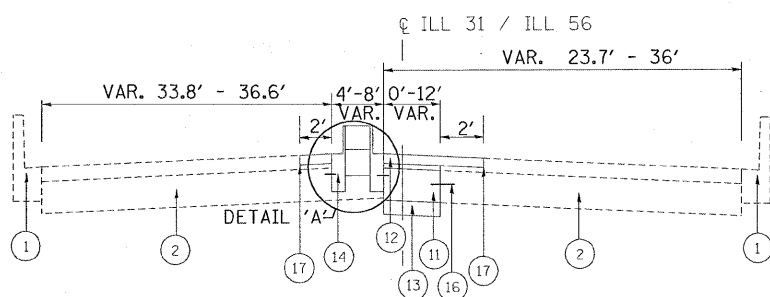
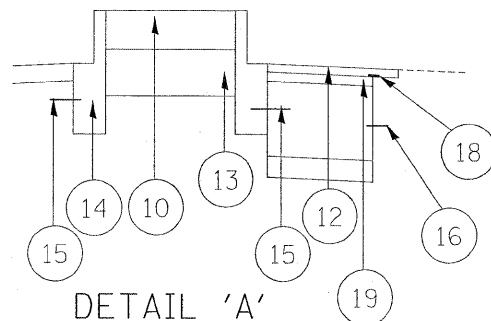


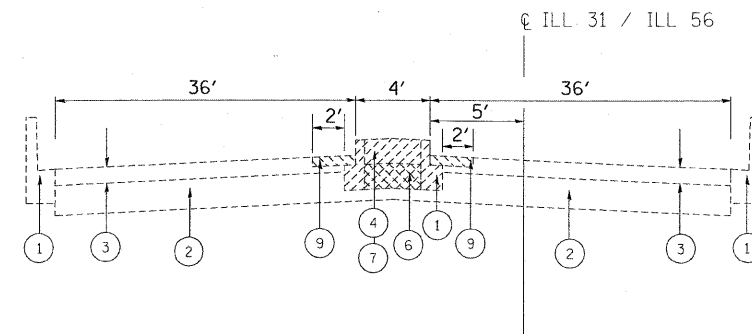
EXISTING TYPICAL SECTION
ILL 31/ ILL 56
STA. 233+92.02 TO STA. 236+79



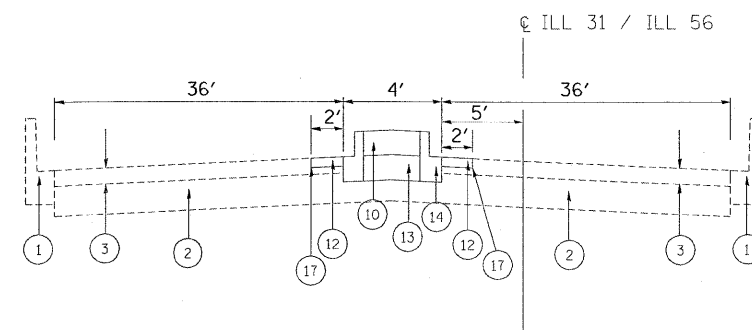
PROPOSED TYPICAL SECTION
ILL 31/ ILL 56
STA. 233+92.02 TO STA. 236+79



DETAIL 'A'



EXISTING TYPICAL SECTION
ILL 31/ ILL 56
STA. 236+79 TO STA. 240+45
(LOOKING NORTH)



PROPOSED TYPICAL SECTION
ILL 31/ ILL 56
STA. 236+79 TO STA. 240+45
(LOOKING NORTH)

LEGEND

- ① EXISTING COMBINATION CONCRETE CURB & GUTTER
- ② EXISTING PCC PAVEMENT ±11"
- ③ EXISTING HMA OVERLAY ±3 1/4"
- ④ EXISTING HMA MEDIAN
- ⑤ EXISTING GRASS MEDIAN
- ⑥ PROPOSED EARTH EXCAVATION (TO BE INCLUDED IN THE COST OF MEDIAN REMOVAL ITEM)
- ⑦ PROPOSED MEDIAN REMOVAL
- ⑧ PROPOSED CURB & GUTTER REMOVAL (SAW CUT & REMOVAL OF HMA OVERLAY OVER GUTTER SHALL BE INCLUDED IN THE PRICE OF REMOVAL)
- ⑨ PROPOSED HOT-MIX ASPHALT SURFACE REMOVAL, 1 3/4"
- ⑩ PROPOSED CONCRETE MEDIAN SURFACE, 4 INCH
- ⑪ PROPOSED PCC BASE COURSE, 11'
- ⑫ PROPOSED POLYMERIZED HOT-MIX ASPHALT SURFACE COURSE, MIX "F", N90, 1 3/4"
- ⑬ PROPOSED SUB-BASE GRANULAR MATERIAL, TYPE B 4" (TO BE INCLUDED IN THE COST OF PCC BASE COURSE & CONCRETE MEDIAN SURFACE ITEM)
- ⑭ PROPOSED COMBINATION CONCRETE CURB AND GUTTER, TYPE B 6.12
- ⑮ PROPOSED NO. 6 EPOXY COATED TIE BAR, DEFORMED, (DRILL AND GROUT), AT 24" SPACING, (INCLUDED IN THE COST OF COMBINATION CURB AND GUTTER)
- ⑯ PROPOSED NO. 8 EPOXY COATED TIE BAR, DEFORMED, (DRILL AND GROUT), AT 24" SPACING, (INCLUDED IN THE COST OF PCC BASE COURSE ITEM)
- ⑰ PROPOSED SAW CUT (INCLUDED IN THE COST OF HOT-MIX ASPHALT SURFACE REMOVAL, 1 3/4")
- ⑱ PROPOSED STRIP REFLECTIVE CRACK CONTROL TREATMENT
- ⑲ PROPOSED LEVELING BINDER (MACHINE METHOD), N70, 3/4"

HOT-MIX ASPHALT MIXTURE REQUIREMENTS	
MIXTURE TYPE	AIR VOIDS
RESURFACING	
POLYMERIZED HOT-MIX ASPHALT SURFACE COURSE, MIX "F", N90 (IL 9.5 mm)	4% @ 90 GYR
LEVELING BINDER (MACHINE METHOD), N70	4% @ 70 GYR

THE UNIT WEIGHT USED TO CALCULATE ALL HMA SURFACE MIXTURE QUANTITIES IS 112 LB/ SQ YD/IN.

THE "AC TYPE" FOR POLYMERIZED HMA MIXES SHALL BE "SBS/SBR PG 70-22" AND FOR NON-POLYMERIZED HMA THE "AC TYPE" SHALL BE "PG 64 -22" UNLESS MODIFIED BY DISTRICT ONE SPECIAL PROVISIONS. FOR "PERCENT OF RAP" SEE DISTRICT ONE SPECIAL PROVISIONS.