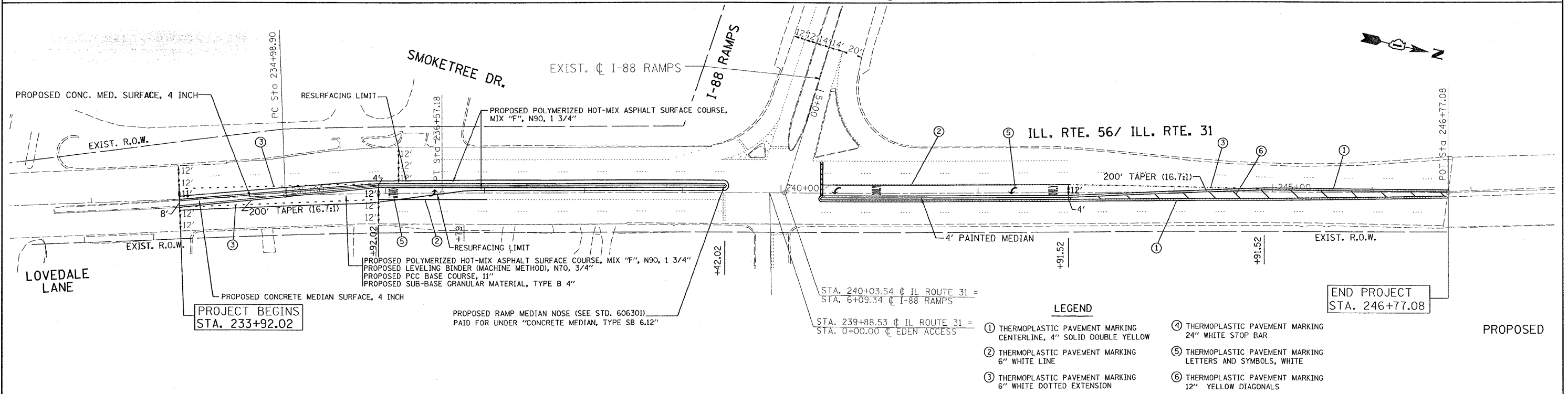
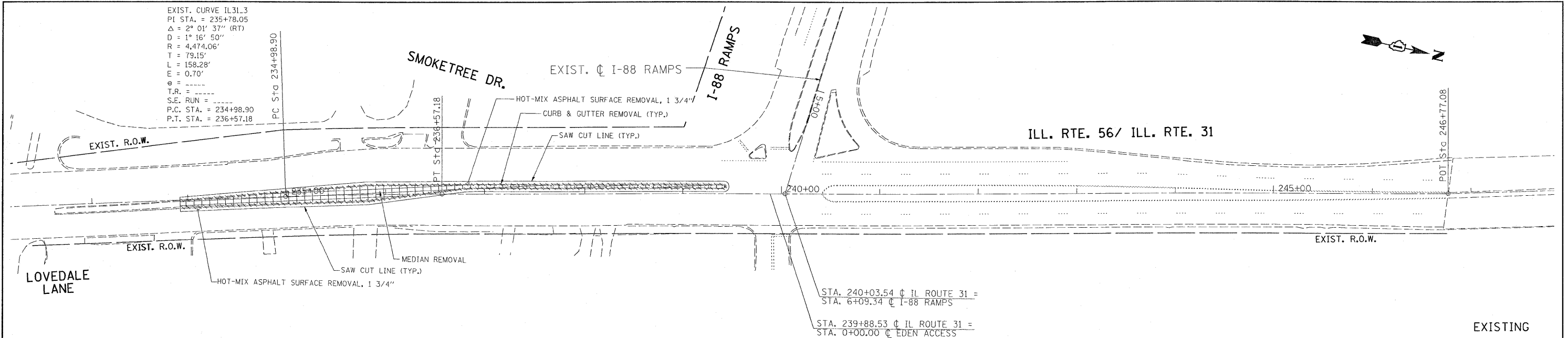
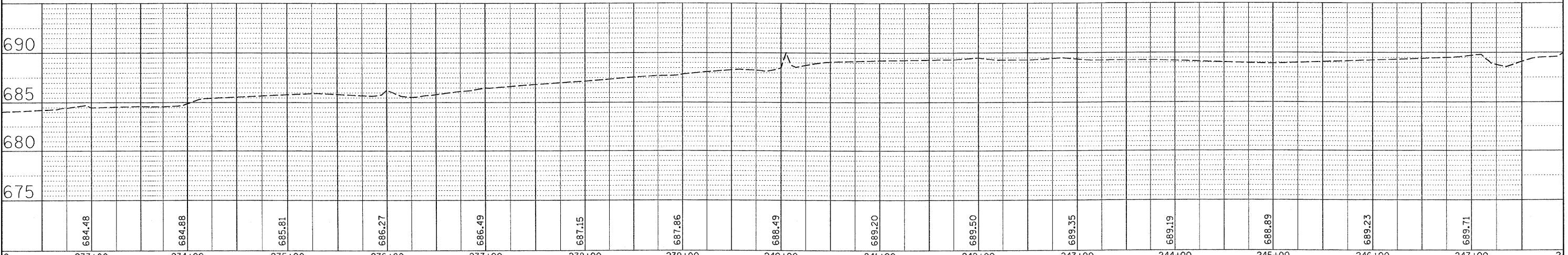


EXIST. CURVE IL31.3
 PI STA. = 235+78.05
 $\Delta = 2^\circ 01' 37''$ (RT)
 $D = 1^\circ 16' 50''$
 $R = 4,474.06'$
 $L = 79.15'$
 $E = 158.28'$
 $e = 0.70'$
 T.R. = ---
 S.E. RUN = ---
 P.C. STA. = 234+98.90
 P.T. STA. = 236+57.18



- LEGEND**
- ① THERMOPLASTIC PAVEMENT MARKING CENTERLINE, 4" SOLID DOUBLE YELLOW
 - ② THERMOPLASTIC PAVEMENT MARKING 6" WHITE LINE
 - ③ THERMOPLASTIC PAVEMENT MARKING 6" WHITE DOTTED EXTENSION
 - ④ THERMOPLASTIC PAVEMENT MARKING 24" WHITE STOP BAR
 - ⑤ THERMOPLASTIC PAVEMENT MARKING LETTERS AND SYMBOLS, WHITE
 - ⑥ THERMOPLASTIC PAVEMENT MARKING 12" YELLOW DIAGONALS



FILE NAME =	USER NAME = abreuh	DESIGNED -	REVISED -
ca:\pwwork\pwwork\abreuh\d0158873\p911989-shi-plan01.dgn		DRAWN -	REVISED -
		CHECKED -	REVISED -
		DATE -	REVISED -

**STATE OF ILLINOIS
 DEPARTMENT OF TRANSPORTATION**

ILLINOIS ROUTE 31 AT INTERSTATE 88 RAMPS

F.A.P. RTE. 365	SECTION 97-N-2	COUNTY KANE	TOTAL SHEETS 21	SHEET NO. 6
CONTRACT NO. 60148				
ILLINOIS FED. AID PROJECT				

DATE: _____ BY: _____

REVIEWED: _____

PLAN: _____

NO. _____

DATE: _____ BY: _____

REVIEWED: _____

PROFILE: _____

NO. _____