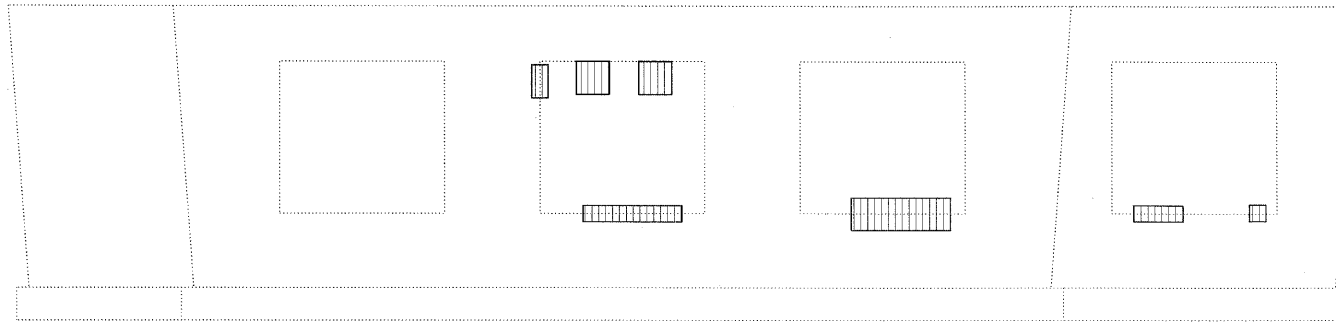
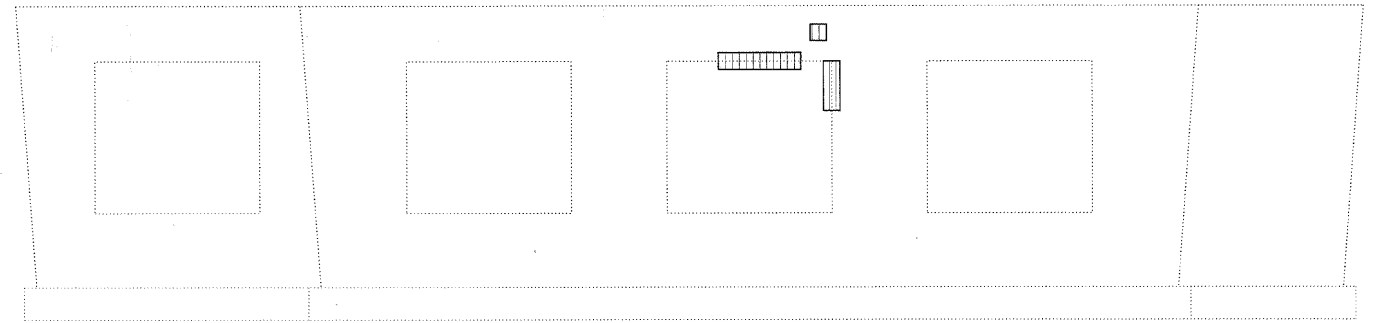


STATE OF ILLINOIS  
DEPARTMENT OF TRANSPORTATION

← F.A.I. 290

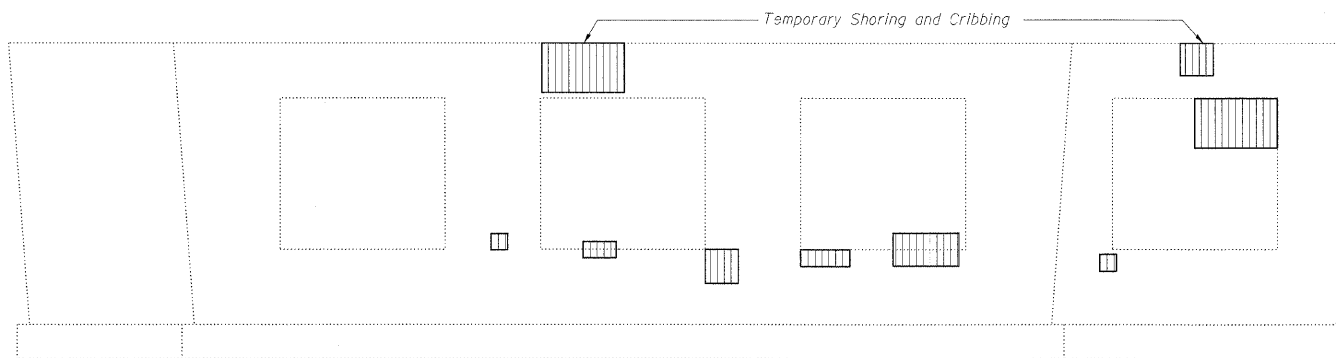


**ELEVATION - PIER A, SOUTH FACE**

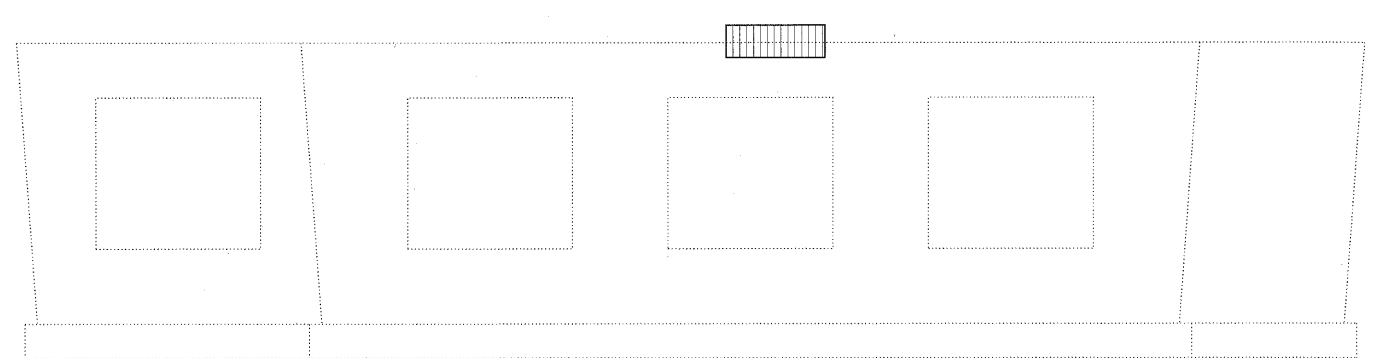


**ELEVATION - PIER A, NORTH FACE**

← F.A.I. 290

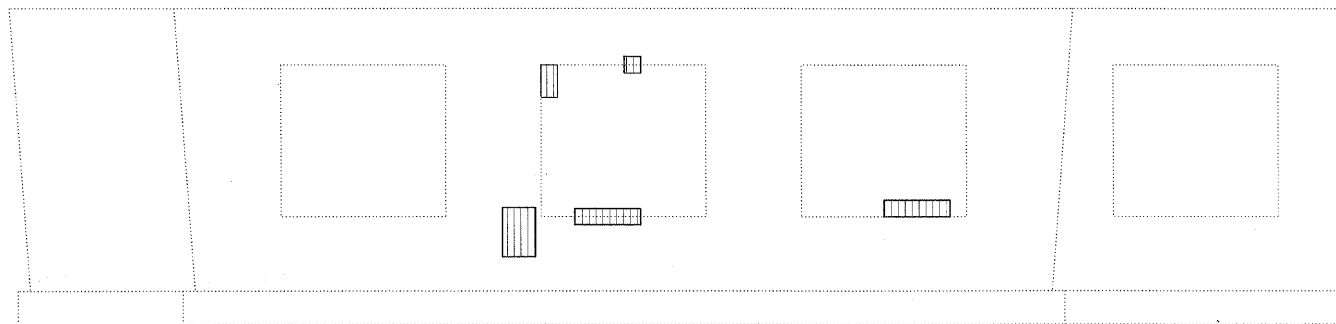


**ELEVATION - PIER B, SOUTH FACE**

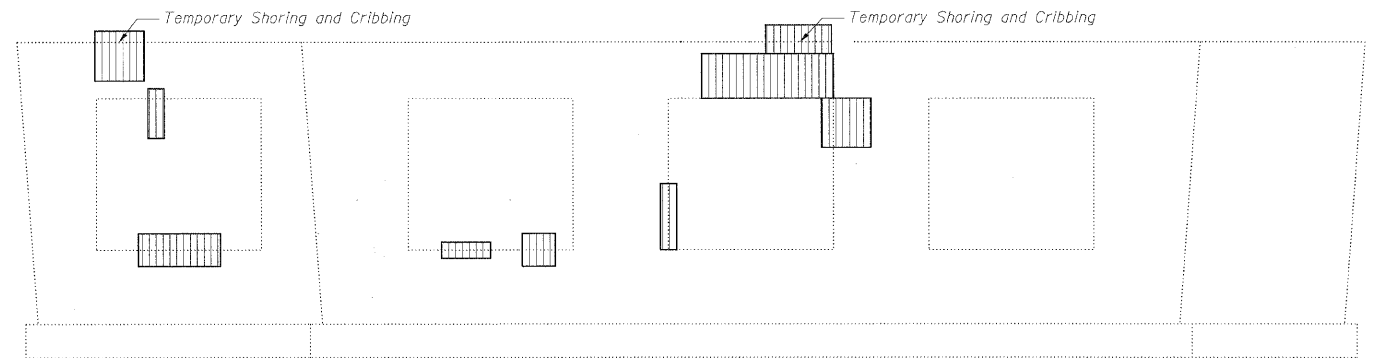


**ELEVATION - PIER B, NORTH FACE**

← F.A.I. 290



**ELEVATION - PIER C, SOUTH FACE**



**ELEVATION - PIER C, NORTH FACE**

**BILL OF MATERIAL**

| SYMBOL | ITEM   | UNIT    | QUANTITY |
|--------|--|---------|----------|
|        | Structural Repair of Concrete (Depth Equal to or Less than 5 Inches) | Sq. Ft. | 203      |
|        | Temporary Shoring & Cribbing   | Each    | 4        |

**BEAM REACTIONS (KIPS)**

| DEAD LOAD | LIVE LOAD | IMPACT LOAD | TOTAL |
|-----------|-----------|-------------|-------|
| 56.4      | 40.9      | 8.5         | 105.8 |

**SUBSTRUCTURE REPAIRS  
STRUCTURE NO. 016-0083**

**Notes:**

- Substructure repair areas are estimated based on IDOT field notes from August 17, 2009.
- Temporary Shoring and Cribbing shall be provided per the Special Provisions for "Structural Repair of Concrete" and "Temporary Shoring and Cribbing".
- Interference is expected from existing conduits. The Contractor shall remove and reerect or temporarily support the existing conduits to complete the work as detailed. When the work is completed the conduits shall be reconnected to the reconstructed abutment or pier utilizing the existing mounting brackets or new mounting brackets. All labor, equipment, and materials necessary for removing and reinstalling or temporarily supporting the existing conduits shall be included in the cost for Structural Repair of Concrete (Depth Equal to or Less than 5 Inches).

**Notes (cont'd):**

- The tabulated beam reactions were taken from the existing construction plans. The Contractor shall verify that the equipment used to support the beams is sufficient to carry these loads in addition to any temporary construction loads.

|            |     |
|------------|-----|
| DESIGNED - | JJJ |
| CHECKED -  | AAY |
| DRAWN -    | RMG |
| CHECKED -  | AAY |

**benesch**

alfred benesch & company  
Engineers • Surveyors • Planners  
205 North Michigan Avenue, Suite 2400  
Chicago, Illinois 60601  
312-665-0450 Job No. 10050

|                         |                    |                        |                       |                           |                  |
|-------------------------|--------------------|------------------------|-----------------------|---------------------------|------------------|
| SHEET NO. 8<br>9 SHEETS | F.A.I. RTE.<br>290 | SECTION<br>2009-099 BR | COUNTY<br>COOK/DUPAGE | TOTAL SHEETS<br>309       | SHEET NO.<br>138 |
|                         | CONTRACT NO. 60157 |                        |                       | ILLINOIS FED. AID PROJECT |                  |